

Hand shower set for bath rim or tile edge installation - Brushed Dark Platinum SERIES SPECIFIC

27 702 979 Product version up to 5/15/2020



- COMPACT RAIN, max. flow rate 6.8 l/min (at 3 bar)
- with anti-scale system
- rosette Ø 50 mm
- hole diameter 32 mm
- metal shower hose 1750mm with integrated anti-twist protection
- WRAS

Two-piece design allows hose to later be changed without dismantling the fitting.

Intrinsic protection against back flow.

| | | |
|---|-------------------------------|---------------|
|  | Brushed Dark Platinum | 27 702 979-99 |
|  | Chrome | 27 702 979-00 |
|  | Brushed Platinum | 27 702 979-06 |
|  | Platinum | 27 702 979-08 |
|  | Durabrass (23kt Gold) | 27 702 979-09 |
|  | Dark Chrome | 27 702 979-19 |
| | Brushed Light Gold | 27 702 979-27 |
|  | Brushed Durabrass (23kt Gold) | 27 702 979-28 |
|  | Matte Black | 27 702 979-33 |
|  | Brushed Dark Brass | 27 702 979-39 |
|  | Brushed Bronze | 27 702 979-42 |
|  | Brushed Champagne (22kt Gold) | 27 702 979-46 |
|  | Champagne (22kt Gold) | 27 702 979-47 |
|  | Brushed Chrome | 27 702 979-93 |

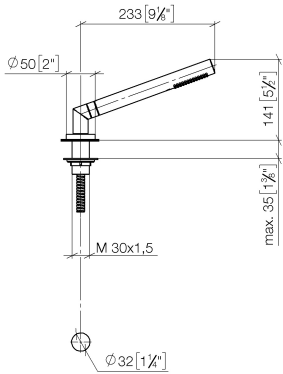
Hand shower set for bath rim or tile edge installation - Brushed Dark Platinum

SERIES SPECIFIC

27 702 979

Product version up to 5/15/2020

mm [inches]



Flow rate chart



Codes & Standards

| | | | |
|----------------|------------------------|-----------------------------|-----------|
| ASME A112.18.1 | cUPC | DIN 4109 | EN 1717 |
| ISO 3822 | Scottish Water Byelaws | UK Water Supply Regulations | Ü-Zeichen |



Hand shower set for bath rim or tile edge installation - Brushed Dark Platinum

SERIES SPECIFIC

27 702 979 Product version up to 5/15/2020

Certificates and sustainability

LGA_29

IAPMO_4976

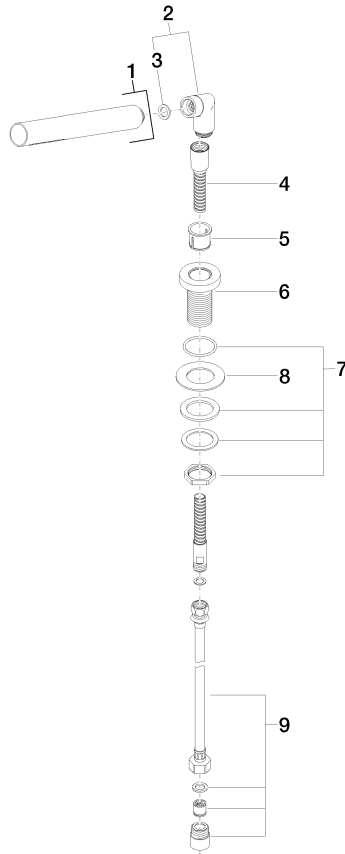
Belgaqua_21-383-2

WRAS_2209

Hand shower set for bath rim or tile edge installation - Brushed Dark Platinum SERIES SPECIFIC

27 702 979 Product version up to 5/15/2020

Parts for other
finishes can be found
here: [Chrome](#)



Spare parts list

| No. | Item Number | Name | Quantity used | Delivery time |
|--|--------------------|---|---------------|---------------|
| 1 | 28 019 979-99 | Hand shower - Brushed Dark Platinum | 1.00 | - |
| Spare part can no longer be ordered, please order the replacement item | | | | |
| 4 | 28 322 970-99 | Metal shower hose 1/2" x 3/8" x 1750 mm - Brushed Dark Platinum | 1.00 | 2 |
| 2 | 04 24 04 189 00-99 | nipple | 1.00 | 20 |
| 6 | 09 30 01 085-99 | rosette | 1.00 | 20 |
| 9 | 12 505 970 90 | High pressure hose 1/2" x 3/8" x 500 mm - | 1.00 | 2 |
| 8 | 09 30 11 060 90 | disc | 1.00 | 2 |
| 7 | 04 30 11 038 66 90 | fixing set | 1.00 | 2 |
| 5 | 90 18 40 085 00 90 | sleeve | 1.00 | 2 |
| 3 | 90 14 20 002 00 90 | seal | 1.00 | 2 |