

Rinsing spray set - Platinum

27 731 970 Product version from 2/1/2023



- with round rosette
- spray flow
- automatic spout/shower diverter
- height of mixer 191 mm
- hole diameter rinsing spray 32mm
- fabric braided hose 1500 mm
- sprayface with anti-scaling system
- lead-free

Can only be combined with 32815682, 33826861, 32815861, 33836888, 32816888, 20816892, 33836875, 32815875.

Intrinsic protection against back flow.

Residual water may emerge from the spray after closing.

Operating unit can be positioned freely.

| | | |
|--|-------------------------------|---------------|
|  | Platinum | 27 731 970-08 |
|  | Chrome | 27 731 970-00 |
|  | Brushed Platinum | 27 731 970-06 |
|  | Durabrand (23kt Gold) | 27 731 970-09 |
|  | Dark Chrome | 27 731 970-19 |
|  | Brushed Durabrand (23kt Gold) | 27 731 970-28 |
|  | Matte Black | 27 731 970-33 |
|  | Brushed Champagne (22kt Gold) | 27 731 970-46 |
|  | Champagne (22kt Gold) | 27 731 970-47 |
|  | Brushed Chrome | 27 731 970-93 |
|  | Brushed Dark Platinum | 27 731 970-99 |

Rinsing spray set - Platinum

27 731 970 Product version from 2/1/2023

mm [inches]



Flow rate chart



Codes & Standards

DIN 4109

EN 1717

ISO 3822

NSF372

NSF61

Ü-Zeichen



Rinsing spray set - Platinum

27 731 970 Product version from 2/1/2023

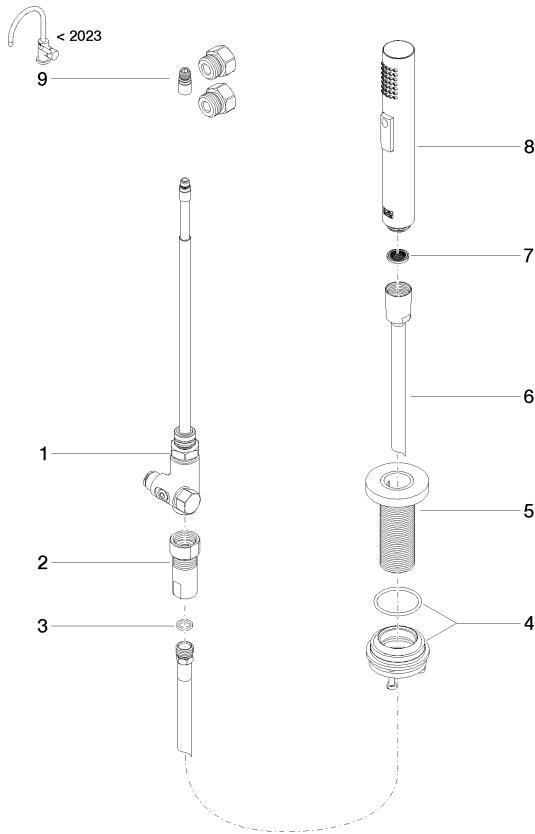
Certificates

| | | | | |
|------------|--------|--------|-------------------|--------------|
| IAPMO_6397 | LGA_29 | LGA_38 | Belgaqua_24-005-2 | IAPMO_N-4976 |
| IAPMO_6397 | | | | |

Rinsing spray set - Platinum

27 731 970 Product version from 2/1/2023

Parts for other
finishes can be found
here: [Chrome](#)



Spare parts list

| No. | Item Number | Name | Quantity used | Delivery time |
|--|--------------------|----------------|---------------|---------------|
| 1 | 90 17 09 046 12 90 | diverter | 1 | 2 |
| 2 | 90 24 03 241 00 90 | nipple | 1 | 2 |
| 3 | 90 14 20 019 00 90 | seal | 1 | 2 |
| 4 | 04 23 10 047 00 92 | fixing set | 1 | 60 |
| 5 | 90 27 86 001 00-08 | rosette | 1 | - |
| Spare part can no longer be ordered, please order the replacement item | | | | |
| 6 | 90 30 02 062 00-08 | hose | 1 | 40 |
| 7 | 09 23 01 039 90 | sieve | 1 | 2 |
| 8 | 04 12 11 158 00-08 | shower | 1 | 40 |
| 9 | 90 17 09 046 14 90 | conversion kit | 1 | 2 |