

Affusion pipe with cover plate - Dark Chrome

SERIES SPECIFIC

27 838 979



- LAMINAR FLOW, max. flow rate 15 l/min (at 3 bar)
- Function from: l/min
- 3/8" shower outlet
- metal shower hose 1250mm with integrated anti-twist protection

Technical data:

- cover plate 240 x 60 mm
- 1/2" connection
- plug-link mounting

Intrinsic protection against back flow.

	Dark Chrome	27 838 979-19
	Chrome	27 838 979-00
	Brushed Platinum	27 838 979-06
	Platinum	27 838 979-08
	Brushed Light Gold	27 838 979-27
	Brushed Durabrass (23kt Gold)	27 838 979-28
	Matte Black	27 838 979-33
	Brushed Chrome	27 838 979-93
	Brushed Dark Platinum	27 838 979-99

Recommended miscellaneous

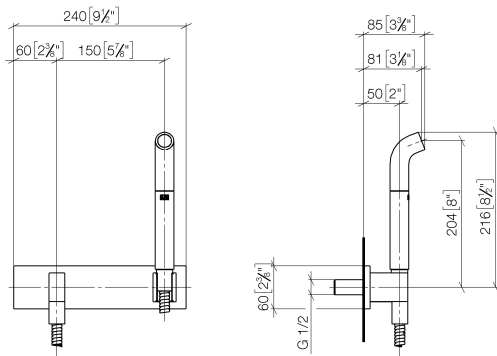


- Concealed wall elbow -

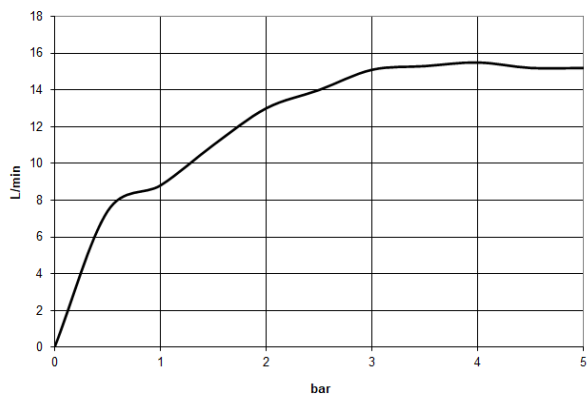
35 085 970 90
- max. recess depth 163 mm
 - min. recess depth 90 mm

27 838 979

mm [inches]



Flow rate chart



Codes & Standards

DIN 4109

ISO 3822

Ü-Zeichen



Affusion pipe with cover plate - Dark Chrome

SERIES SPECIFIC

27 838 979

Certificates and sustainability

LGA_38

27 838 979

