

Body spray without volume control FlowReduce - Chrome

IMO

28 518 782



- spray head Ø 55mm
- ball-joint pivotable through 25° (in any direction)
- rain flow
- anti-scale system
- rosette 60 x 60 mm
- 1/2" connection
- max. flow 5 l/min
- WRAS 1809018
- This product can help a building meet the requirements of Green Building Rating Systems, e.g. LEED®, BREEAM®, DGNB

Fits: IMO, MEM, CL.1, CYO

| | | |
|--|--------------------------------|---------------|
|  | Chrome | 28 518 782-00 |
|  | Brushed Platinum | 28 518 782-06 |
|  | Platinum | 28 518 782-08 |
|  | Dark Chrome | 28 518 782-19 |
|  | Brushed Durabronze (23kt Gold) | 28 518 782-28 |
|  | Matte Black | 28 518 782-33 |
|  | Brushed Champagne (22kt Gold) | 28 518 782-46 |
|  | Champagne (22kt Gold) | 28 518 782-47 |
|  | Brushed Chrome | 28 518 782-93 |
|  | Brushed Dark Platinum | 28 518 782-99 |

Recommended miscellaneous



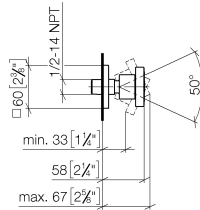
Concealed wall elbow -

35 085 970 90

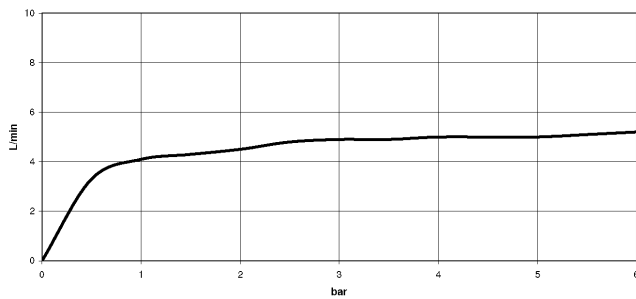
- max. recess depth 163 mm
- min. recess depth 90 mm

28 518 782

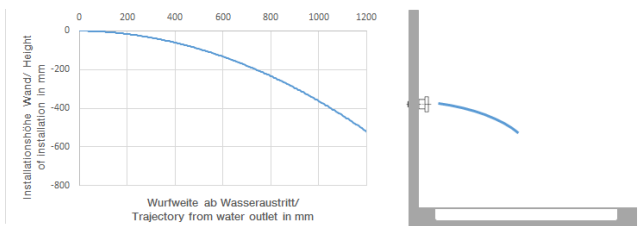
mm [inches]



Flow rate chart



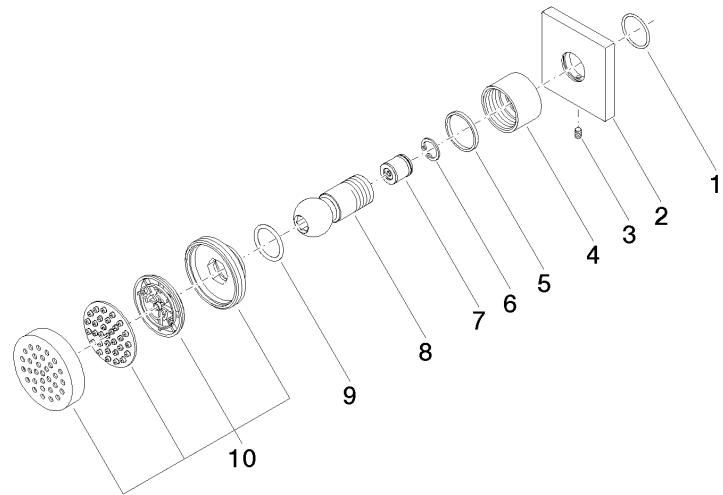
Trajectory diagram



Certificates

WRAS_1809018. IAPMO_4976 (5). LGA_38651.

28 518 782



Spare parts list

| No. | Item Number | Name | Quantity used | Delivery time |
|-----|--------------------|-----------------------|---------------|---------------|
| 1 | 09 14 10 098 90 | seal | 1 | 2 |
| 2 | 09 27 98 003-00 | rosette | 1 | 10 |
| 3 | 09 31 11 048 90 | pin | 1 | 2 |
| 4 | 09 23 30 026-00 | nut | 1 | 10 |
| 5 | 09 14 15 010 90 | ring | 1 | 2 |
| 6 | 09 16 01 014 90 | ring | 1 | 2 |
| 7 | 09 23 01 048 90 | back-flow preventer | 1 | 2 |
| 8 | 09 21 40 016-00 | connection | 1 | 10 |
| 9 | 09 14 10 015 90 | seal | 1 | 2 |
| 10 | 90 12 05 027 00-00 | casing (completely) | 1 | 10 |