

## Two-way diverter for bath rim or tile edge installation - Platinum

SERIES SPECIFIC

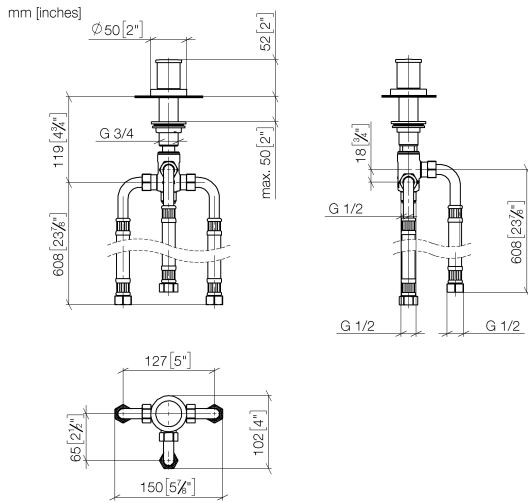
29 140 979 Product version from 6/30/2015



- automatic bath/shower diverter
- hole diameter 32 mm
- rosette Ø 50 mm
- 1/2" connection
- max. flow 64.9 l/min at 3 bar flow pressure
- WRAS

	Platinum	29 140 979-08
	Chrome	29 140 979-00
	Brushed Platinum	29 140 979-06
	Dark Chrome	29 140 979-19
	Brushed Durabrass (23kt Gold)	29 140 979-28
	Matte Black	29 140 979-33
	Brushed Dark Brass	29 140 979-39
	Brushed Bronze	29 140 979-42
	Brushed Champagne (22kt Gold)	29 140 979-46
	Champagne (22kt Gold)	29 140 979-47
	Brushed Chrome	29 140 979-93
	Brushed Dark Platinum	29 140 979-99

29 140 979 Product version from 6/30/2015



Flow rate chart



## Codes & Standards

DIN 4109

ISO 3822

Scottish Water  
Byelaws

UK Water Supply  
Regulations

Ü-Zeichen



## Two-way diverter for bath rim or tile edge installation - Platinum

SERIES SPECIFIC

29 140 979 Product version from 6/30/2015

### Certificates and sustainability

WRAS\_1911

LGA\_29

## Two-way diverter for bath rim or tile edge installation - Platinum

SERIES SPECIFIC

29 140 979 Product version from 6/30/2015

Parts for other  
finishes can be found  
here: [Chrome](#)



### Spare parts list

No.	Item Number	Name	Quantity used	Delivery time
9	09 23 10 004 90	nut	1.00	2
5	09 27 97 013-08	rosette	1.00	40
1	09 20 71 003-08	handle	1.00	40
7	09 14 05 014 90	seal	1.00	2
2	90 30 30 014 00 90	screw	1.00	2
8	09 14 40 002 90	seal	1.00	2
3	09 20 71 002-08	handle	1.00	40
4	09 16 01 012-08	ring	1.00	40
10	90 17 09 051 00 90	diverter	1.00	2
6	09 14 10 030 90	seal	1.00	2