

IMO Single-lever basin mixer with pop-up waste - Brushed Platinum








IMO

33 500 671 Product version from 4/1/2024



- 125mm projection
- fixed spout
- rectangular, air-enriched flow
- height of mixer 138 mm
- height up to aerator 71 mm
- hole diameter 35 mm
- 2x screw-in M 10 x 1 pressure hose, leak-tested
- max. flow 4.6 l/min
- lead-free
- This product can help a building meet the requirements of Green Building Rating Systems, e.g. LEED®, BREEAM®, DGNB

Only suitable for basins with an overflow.

	Brushed Platinum	33 500 671-06
	Chrome	33 500 671-00
	Dark Chrome	33 500 671-19
	Brushed Light Gold	33 500 671-27
	Matte Black	33 500 671-33
	Brushed Chrome	33 500 671-93
	Brushed Dark Platinum	33 500 671-99



IMO Single-lever basin mixer with pop-up waste - Brushed Platinum

IMO

33 500 671 Product version from 4/1/2024

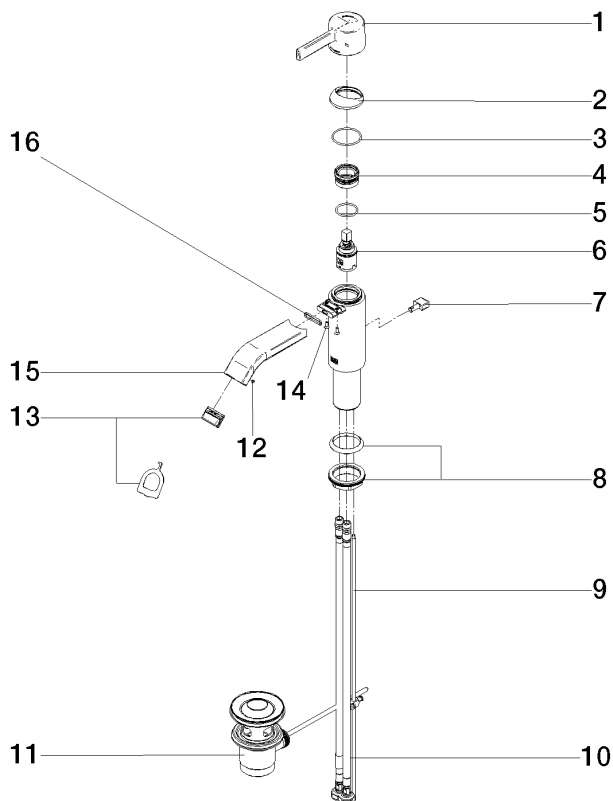
Certificates and sustainability

LGA_19

WRAS_250102

33 500 671 Product version from 4/1/2024

Parts for other
finishes can be found
here: [Chrome](#)



Spare parts list

No.	Item Number	Name	Quantity used	Delivery time
16	09 14 10 017 90	seal	1.00	2
4	90 23 10 146 00 90	nut	1.00	2
5	09 14 10 112 90	seal	1.00	2
13	90 29 03 134 00 90	aerator	1.00	2
11	90 11 01 001 00-06	pop-up waste	1.00	10
15	90 28 22 440 00-06	spout	1.00	10
1	90 20 67 019 00-06	handle	1.00	10
12	09 31 11 006 90	pin	1.00	2
7	09 20 67 002-06	handle	1.00	10
8	04 23 10 044 07 90	fixing set	1.00	2
3	09 14 10 102 90	seal	1.00	2
10	04 30 04 104 00 90	hose	2.00	2
9	09 31 09 080-06	pull-rod	1.00	10
2	90 28 30 059 00-06	cover	1.00	-
Spare part can no longer be ordered, please order the replacement item				
14	09 30 30 166 90	screw	2.00	2
6	90 15 05 042 00 90	cartridge	1.00	2