

IMO Single-lever basin mixer with pop-up waste - Matte Black



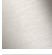




IMO

33 500 671 Product version from 4/1/2024



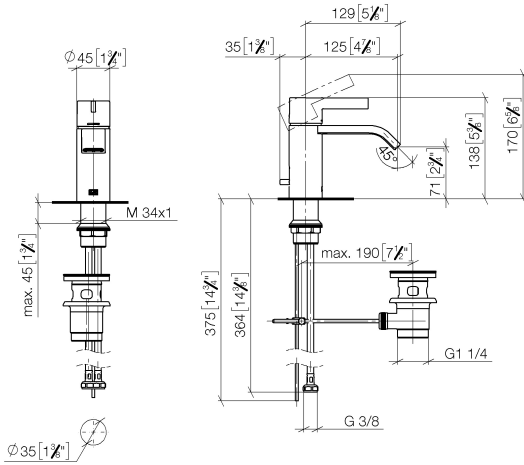
- 125mm projection
- fixed spout
- rectangular, air-enriched flow
- height of mixer 138 mm
- height up to aerator 71 mm
- hole diameter 35 mm
- 2x screw-in M 10 x 1 pressure hose, leak-tested
- max. flow 4.6 l/min
- lead-free
- This product can help a building meet the requirements of Green Building Rating Systems, e.g. LEED®, BREEAM®, DGNB

Only suitable for basins with an overflow.

| | | |
|---|-----------------------|---------------|
|  | Matte Black | 33 500 671-33 |
|  | Chrome | 33 500 671-00 |
|  | Brushed Platinum | 33 500 671-06 |
|  | Dark Chrome | 33 500 671-19 |
|  | Brushed Light Gold | 33 500 671-27 |
|  | Brushed Chrome | 33 500 671-93 |
|  | Brushed Dark Platinum | 33 500 671-99 |

33 500 671 Product version from 4/1/2024

mm [inches]



Flow rate chart



Codes & Standards

DIN 4109

ISO 3822

Scottish Water Byelaws

UK Water Supply Regulations

Ü-Zeichen



IMO Single-lever basin mixer with pop-up waste - Matte Black

IMO

33 500 671 Product version from 4/1/2024

Certificates and sustainability

LGA_19

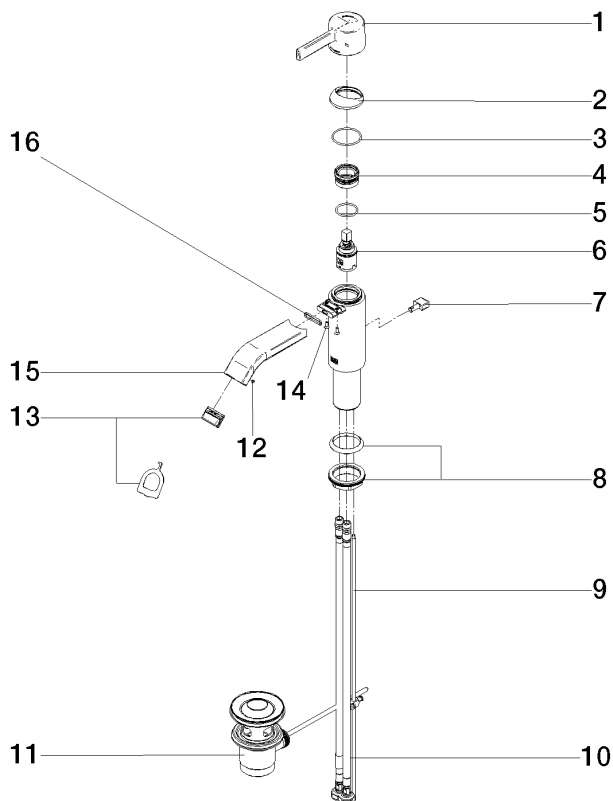
WRAS_250102

IMO Single-lever basin mixer with pop-up waste - Matte Black

IMO

33 500 671 Product version from 4/1/2024

Parts for other finishes can be found here: [Chrome](#)



Spare parts list

| No. | Item Number | Name | Quantity used | Delivery time |
|--|--------------------|--------------|---------------|---------------|
| 8 | 04 23 10 044 07 90 | fixing set | 1.00 | 2 |
| 11 | 90 11 01 001 00-33 | pop-up waste | 1.00 | 30 |
| 2 | 90 28 30 059 00-33 | cover | 1.00 | - |
| Spare part can no longer be ordered, please order the replacement item | | | | |
| 1 | 90 20 67 019 00-33 | handle | 1.00 | 30 |
| 13 | 90 29 03 134 00 90 | aerator | 1.00 | 2 |
| 10 | 04 30 04 104 00 90 | hose | 2.00 | 2 |
| 7 | 09 20 67 002-33 | handle | 1.00 | 60 |
| 6 | 90 15 05 042 00 90 | cartridge | 1.00 | 2 |
| 12 | 09 31 11 006 90 | pin | 1.00 | 2 |
| 15 | 90 28 22 440 00-33 | spout | 1.00 | 30 |
| 9 | 09 31 09 080-33 | pull-rod | 1.00 | 30 |
| 5 | 09 14 10 112 90 | seal | 1.00 | 2 |
| 4 | 90 23 10 146 00 90 | nut | 1.00 | 2 |
| 3 | 09 14 10 102 90 | seal | 1.00 | 2 |
| 16 | 09 14 10 017 90 | seal | 1.00 | 2 |
| 14 | 09 30 30 166 90 | screw | 2.00 | 2 |