

MEM Single-lever basin mixer without pop-up waste - Brushed Champagne (22kt Gold)

MEM

33 521 782 Product version from 5/5/2021



- 165mm projection
- fixed spout
- rectangular, air-enriched flow
- height of mixer 310 mm
- height up to aerator 202 mm
- hole diameter 35 mm
- 2x screw-in M 10 x 1 pressure hose, leak-tested
- max. flow 5.7 l/min
- lead-free
- WRAS
- This product can help a building meet the requirements of Green Building Rating Systems, e.g. LEED®, BREEAM®, DGNB

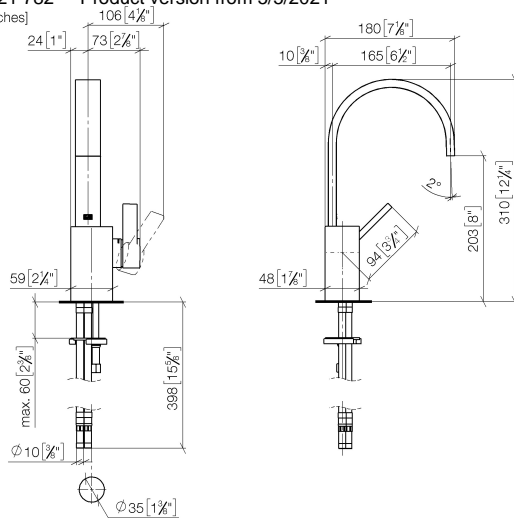
| | | |
|---|--------------------------------|---------------|
|  | Brushed Champagne (22kt Gold) | 33 521 782-46 |
|  | Chrome | 33 521 782-00 |
|  | Brushed Platinum | 33 521 782-06 |
|  | Platinum | 33 521 782-08 |
|  | Dark Chrome | 33 521 782-19 |
|  | Brushed Durabronze (23kt Gold) | 33 521 782-28 |
|  | Brushed Dark Brass | 33 521 782-39 |
|  | Champagne (22kt Gold) | 33 521 782-47 |
|  | Brushed Dark Platinum | 33 521 782-99 |

MEM Single-lever basin mixer without pop-up waste - Brushed Champagne (22kt Gold)

MEM

33 521 782 Product version from 5/5/2021

mm [inches]



Flow rate chart



Codes & Standards

| | | | |
|---------------------------|--------------------------------|-----------------------------|------------|
| DIN 4109 | EN 817 | Executive Order no. 1007 | ISO 3822 |
| Scottish Water Byelaws | UK Water Supply Regulations | Ü-Zeichen | VA-Zeichen |



MEM Single-lever basin mixer without pop-up waste - Brushed Champagne
(22kt Gold)

MEM

33 521 782 Product version from 5/5/2021

Certificates and sustainability

| | | | |
|--------|--------|----------|-------------|
| ETA_18 | LGA_28 | GDV_0400 | WRAS_240202 |
|--------|--------|----------|-------------|

MEM Single-lever basin mixer without pop-up waste - Brushed Champagne (22kt Gold)

MEM

33 521 782 Product version from 5/5/2021

Parts for other
finishes can be found
here: [Chrome](#)

