

## MEM Single-lever basin mixer without pop-up waste - Brushed Platinum

MEM

33 526 782 Product version from 3/10/2014 to 3/19/2019



- 200mm projection
- fixed spout
- rectangular, air-enriched flow
- height of mixer 340 mm
- height up to aerator 216 mm
- hole diameter 35 mm
- 2x screw-in M 10 x 1 pressure hose, leak-tested
- max. flow 5.7 l/min
- lead-free
- WRAS
- This product can help a building meet the requirements of Green Building Rating Systems, e.g. LEED®, BREEAM®, DGNB

	Brushed Platinum	33 526 782-06
	Chrome	33 526 782-00
	Platinum	33 526 782-08
	Dark Chrome	33 526 782-19
	Brushed Durabronze (23kt Gold)	33 526 782-28
	Brushed Champagne (22kt Gold)	33 526 782-46
	Champagne (22kt Gold)	33 526 782-47
	Brushed Dark Platinum	33 526 782-99

33 526 782 Product version from 3/10/2014 to 3/19/2019



### Flow rate chart



### Codes & Standards

DIN 4109

EN 817

Executive Order  
no. 1007

ISO 3822

Scottish Water  
Byelaws

UK Water Supply  
Regulations

Ü-Zeichen

VA-Zeichen



MEM Single-lever basin mixer without pop-up waste - Brushed Platinum

MEM

33 526 782    Product version from 3/10/2014 to 3/19/2019

Certificates and sustainability

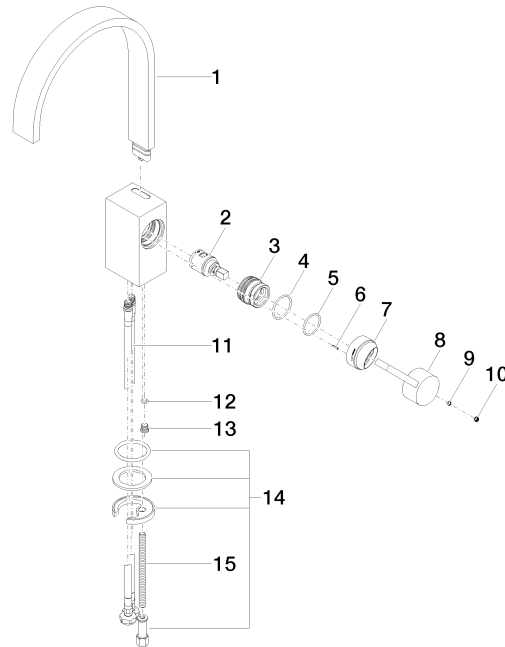
ETA_18	LGA_28	GDV_0400	WRAS_240202
--------	--------	----------	-------------

## MEM Single-lever basin mixer without pop-up waste - Brushed Platinum

MEM

33 526 782 Product version from 3/10/2014 to 3/19/2019

Parts for other  
finishes can be found  
here: [Chrome](#)



### Spare parts list

No.	Item Number	Name	Quantity used	Delivery time
	15 09 31 11 012 90	pin	1.00	2
	11 04 30 04 104 00 90	hose	2.00	2
	2 90 15 05 042 00 90	cartridge	1.00	2
	7 09 28 30 028-06	cover	1.00	10
	8 09 20 78 057-06	handle	1.00	10
	3 09 24 04 288 90	nut	1.00	2
	4 09 14 10 137 90	seal	1.00	2
	12 09 14 10 132 90	seal	1.00	2
	13 09 31 20 027 10-00	plug	1.00	10
	1 90 28 22 152 01-06	spout	1.00	10
	14 04 30 11 038 75 90	fixing set	1.00	2
	6 09 31 11 152 90	pin	1.00	2
	10 90 31 20 109 00 90	plug	1.00	2
	9 90 31 11 063 00 90	pin	1.00	2
	5 90 14 10 063 00 90	seal	1.00	2