

## TARA ULTRA BAR TAP Single-lever mixer - Brushed Durabronze (23kt Gold)

TARA ULTRA

33 805 875 Product version up to 5/15/2020



- 166mm projection
- gauge mm
- pivotable spout 360°
- laminar flow
- height of mixer 303 mm
- height up to laminar flow regulator 186 mm
- hole diameter 35 mm
- max. flow 8 l/min at 3 bar flow pressure
- lead-free
- This product can help a building meet the requirements of Green Building Rating Systems, e.g. LEED®, BREEAM®, DGNB

	Brushed Durabronze (23kt Gold)	33 805 875-28
	Chrome	33 805 875-00
	Brushed Platinum	33 805 875-06
	Platinum	33 805 875-08
	Durabronze (23kt Gold)	33 805 875-09
	Dark Chrome	33 805 875-19
	Matte Black	33 805 875-33
	Brushed Bronze	33 805 875-42
	Brushed Champagne (22kt Gold)	33 805 875-46
	Champagne (22kt Gold)	33 805 875-47
	Brushed Chrome	33 805 875-93
	Brushed Dark Platinum	33 805 875-99

### Recommended miscellaneous

**Dispenser without rosette -  
Brushed Durabronze (23kt Gold)**

82 424 970-28



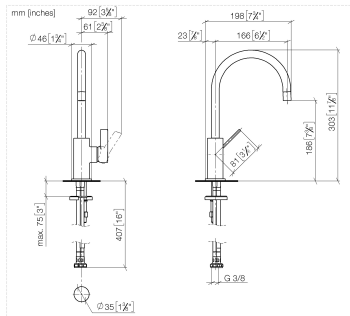
### Recommended miscellaneous

**Strainer waste with control handle -  
Brushed Durabronze (23kt Gold)**

10 712 970-28



33 805 875 Product version up to 5/15/2020



### Flow rate chart



### Codes & Standards

DIN 4109

ISO 3822

Ü-Zeichen



## TARA ULTRA BAR TAP Single-lever mixer - Brushed Durabronz (23kt Gold)

TARA ULTRA

33 805 875 Product version up to 5/15/2020

Certificates and sustainability

LGA\_18

33 805 875 Product version up to 5/15/2020

Parts for other  
finishes can be found  
here: [Chrome](#)



## Spare parts list

No.	Item Number	Name	Quantity used	Delivery time
4	90 15 05 041 00 90	cartridge	1.00	2
3	09 31 11 008 90	pin	1.00	2
13	04 30 04 016 00 90	hose	2.00	60
2	90 23 01 067 00-28	aerator	1.00	20
12	04 30 11 038 64 90	fixing set	1.00	2
6	09 24 04 204-28	cover	1.00	20
9	09 20 88 051-28	handle	1.00	20
15	12 803 970 90	extension	1.00	60
11	09 27 85 001-28	rosette	1.00	20
5	09 24 04 130-07	nut	1.00	30
10	09 14 10 118 90	seal	1.00	2
14	09 31 11 011 90	pin	1.00	2
1	90 28 22 206 00-28	spout	1.00	20
8	90 31 11 030 00 90	pin	1.00	2
7	90 31 20 109 00 90	plug	1.00	2