

TARA Single-lever mixer - Matte Black

TARA

33 815 888



- 236mm projection
- pivotable spout 360°
- air-enriched flow
- height of mixer 400 mm
- height up to aerator 230 mm
- hole diameter 35 mm
- max. flow 7 l/min at 3 bar flow pressure
- lead-free
- WRAS 2311044
- This product can help a building meet the requirements of Green Building Rating Systems, e.g. LEED®, BREEAM®, DGNB

| | | |
|--------------------------------------------------------------------------------------|-------------------------------|---------------|
|  | Matte Black | 33 815 888-33 |
|  | Chrome | 33 815 888-00 |
|  | Brushed Platinum | 33 815 888-06 |
|  | Platinum | 33 815 888-08 |
|  | Durabrand (23kt Gold) | 33 815 888-09 |
|  | Dark Chrome | 33 815 888-19 |
|  | Brushed Durabrand (23kt Gold) | 33 815 888-28 |
|  | Brushed Champagne (22kt Gold) | 33 815 888-46 |
|  | Champagne (22kt Gold) | 33 815 888-47 |
|  | Brushed Chrome | 33 815 888-93 |
|  | Brushed Dark Platinum | 33 815 888-99 |

Recommended miscellaneous

Dispenser with rosette - Matte Black

82 444 970-33

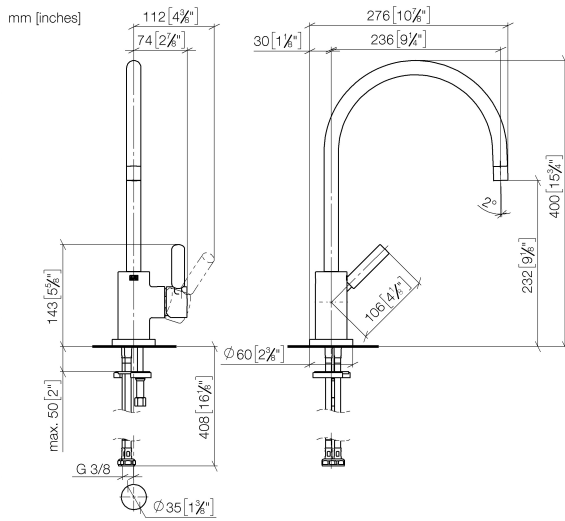


Recommended miscellaneous

Strainer waste with control handle - Matte Black 10 710 970-33



33 815 888



Flow rate chart



Codes & Standards

| | | | |
|---------------------------|--------------------------------|-----------------------------|------------|
| DIN 4109 | EN 817 | Executive Order no. 1007 | ISO 3822 |
| Scottish Water Byelaws | UK Water Supply Regulations | Ü-Zeichen | VA-Zeichen |



TARA Single-lever mixer - Matte Black

TARA

33 815 888

Certificates

GDV_0400

ETA_18

LGA_8

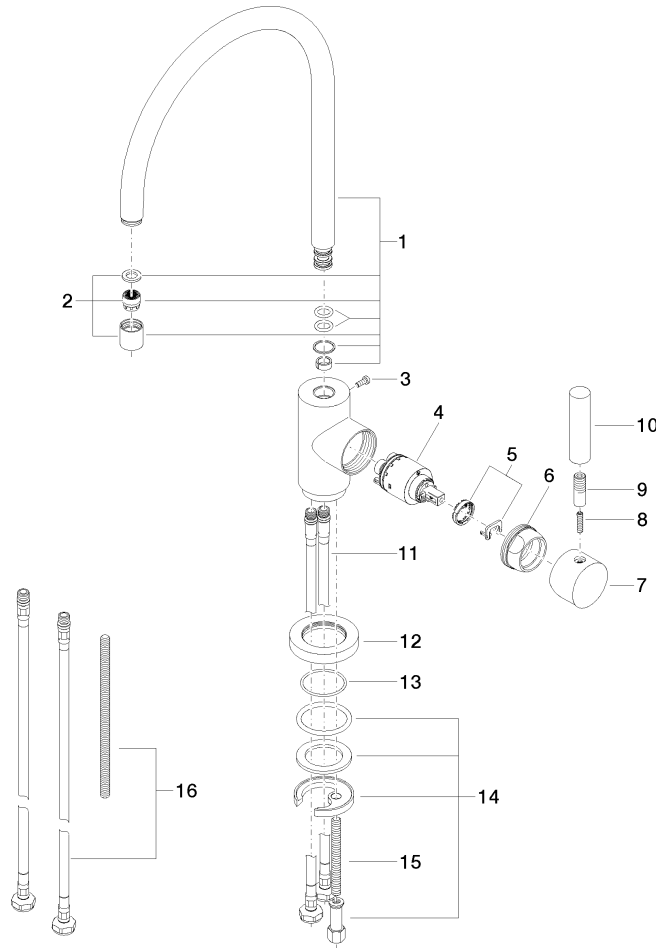
WRAS_2311

33 815 888

Product version from 10/27/2020 to 9/7/2021

Product version from 9/7/2021

Parts for other
finishes can be found
here: [Chrome](#)





TARA Single-lever mixer - Matte Black

TARA

33 815 888

Spare parts list

Product version from 10/27/2020 to 9/7/2021

Product version from 9/7/2021

| No. | Item Number | Name | Quantity used | Delivery time |
|-----|--------------------|-------|---------------|---------------|
| | 90 28 22 049 02-33 | spout | 17 | 2 |