

TARA Single-lever mixer - Brushed Champagne (22kt Gold)

TARA

33 815 888 Product version from 5/31/2010 to 10/27/2020



- 236mm projection
- pivotable spout 360°
- air-enriched flow
- height of mixer 400 mm
- height up to aerator 230 mm
- hole diameter 35 mm
- max. flow 7 l/min at 3 bar flow pressure
- lead-free
- WRAS
- This product can help a building meet the requirements of Green Building Rating Systems, e.g. LEED®, BREEAM®, DGNB

| | | |
|--|-------------------------------|---------------|
| | Brushed Champagne (22kt Gold) | 33 815 888-46 |
| | Chrome | 33 815 888-00 |
| | Brushed Platinum | 33 815 888-06 |
| | Platinum | 33 815 888-08 |
| | Durabrand (23kt Gold) | 33 815 888-09 |
| | Dark Chrome | 33 815 888-19 |
| | Brushed Durabrand (23kt Gold) | 33 815 888-28 |
| | Matte Black | 33 815 888-33 |
| | Brushed Bronze | 33 815 888-42 |
| | Champagne (22kt Gold) | 33 815 888-47 |
| | Brushed Chrome | 33 815 888-93 |
| | Brushed Dark Platinum | 33 815 888-99 |

Recommended miscellaneous

Dispenser with rosette - Brushed Champagne (22kt Gold) 82 444 970-46



Recommended miscellaneous

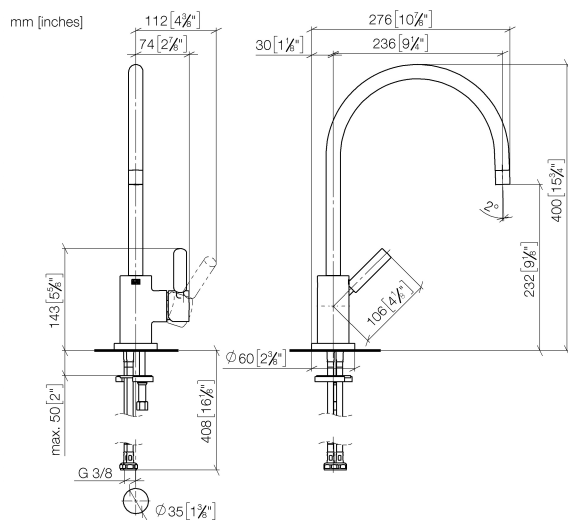
Strainer waste with control handle - Brushed Champagne (22kt Gold) 10 710 970-46



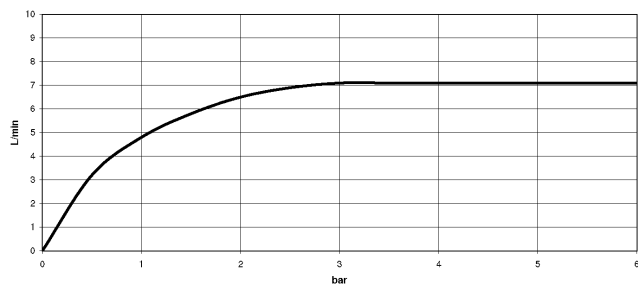
TARA Single-lever mixer - Brushed Champagne (22kt Gold)

TARA

33 815 888 Product version from 5/31/2010 to 10/27/2020



Flow rate chart



Codes & Standards

DIN 4109

EN 817

Executive Order
no. 1007

ISO 3822

Scottish Water
Byelaws

UK Water Supply
Regulations

Ü-Zeichen

VA-Zeichen



TARA Single-lever mixer - Brushed Champagne (22kt Gold)

TARA

33 815 888 Product version from 5/31/2010 to 10/27/2020

Certificates and sustainability

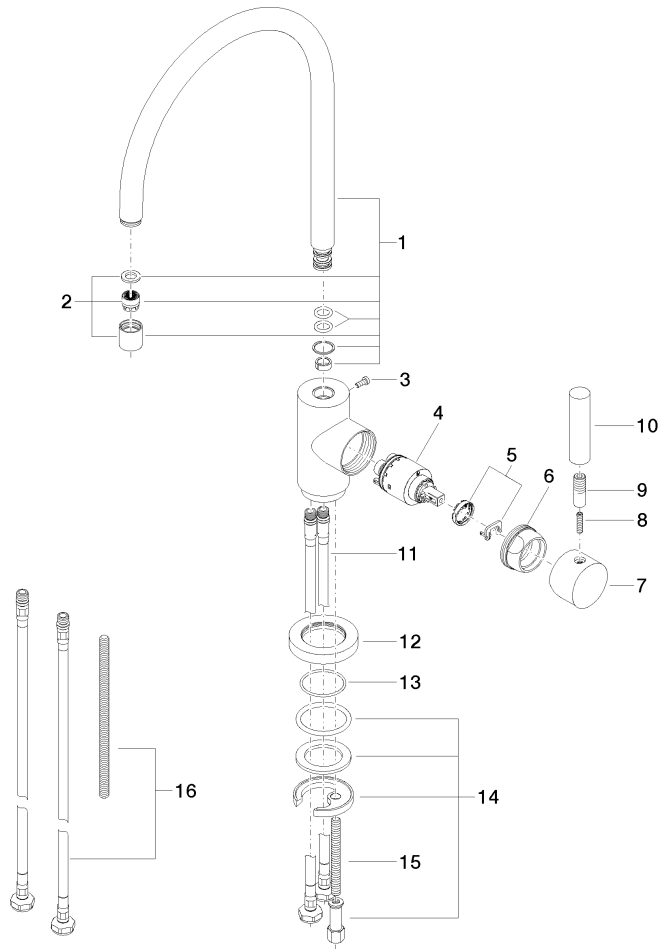
| | | | |
|----------|--------|-------|-----------|
| GDV_0400 | ETA_18 | LGA_8 | WRAS_2311 |
|----------|--------|-------|-----------|

TARA Single-lever mixer - Brushed Champagne (22kt Gold)

TARA

33 815 888 Product version from 5/31/2010 to 10/27/2020

Parts for other
finishes can be found
here: [Chrome](#)



Spare parts list

| No. | Item Number | Name | Quantity used | Delivery time |
|--|-----------------------|-------------|---------------|---------------|
| | 13 09 14 10 034 90 | seal | 1.00 | 2 |
| | 8 09 31 11 010 90 | pin | 1.00 | 2 |
| | 14 04 30 11 038 00 90 | fixing set | 1.00 | 2 |
| | 11 04 30 04 104 00 90 | hose | 2.00 | 2 |
| | 2 90 23 01 028 03-46 | aerator | 1.00 | 30 |
| | 1 90 28 22 049 02-46 | spout | 1.00 | 30 |
| | 3 09 30 30 054 90 | screw | 1.00 | 2 |
| | 6 09 24 04 107-46 | nut | 1.00 | 60 |
| | 10 11 170 880-46 | handle | 1.00 | - |
| Spare part can no longer be ordered, please order the replacement item | | | | |
| | 7 90 20 88 040 00-46 | handle | 1.00 | 30 |
| | 16 12 803 970 90 | extension | 1.00 | 60 |
| | 15 09 31 11 011 90 | pin | 1.00 | 2 |
| | 12 09 28 10 055-46 | rosette | 1.00 | 60 |
| | 4 90 15 05 065 00 90 | cartridge | 1.00 | 2 |
| | 5 90 28 10 148 00 90 | accessories | 1.00 | 2 |
| | 9 90 24 04 048 00-46 | nipple | 1.00 | 30 |