

TARA ULTRA Profi single-lever mixer - Dark Chrome






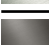
TARA ULTRA

33 860 875



- 240mm projection
- pivotable 360°
- air-enriched flow and spray flow
- height of mixer 685 mm
- height up to aerator 129 mm
- hole diameter 35 mm
- sprayface with anti-scaling system
- max. flow 8 l/min at 3 bar flow pressure
- lead-free
- This product can help a building meet the requirements of Green Building Rating Systems, e.g. LEED®, BREEAM®, DGNB

Intrinsic protection against back flow.

	Dark Chrome	33 860 875-19
	Chrome	33 860 875-00
	Brushed Platinum	33 860 875-06
	Platinum	33 860 875-08
	Brushed Chrome	33 860 875-93
	Brushed Dark Platinum	33 860 875-99

Recommended miscellaneous



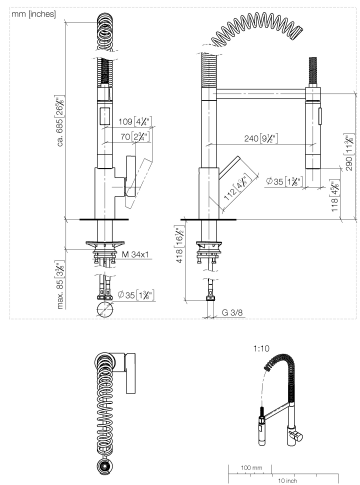
Dispenser without rosette - Dark Chrome 82 424 970-19

Recommended miscellaneous

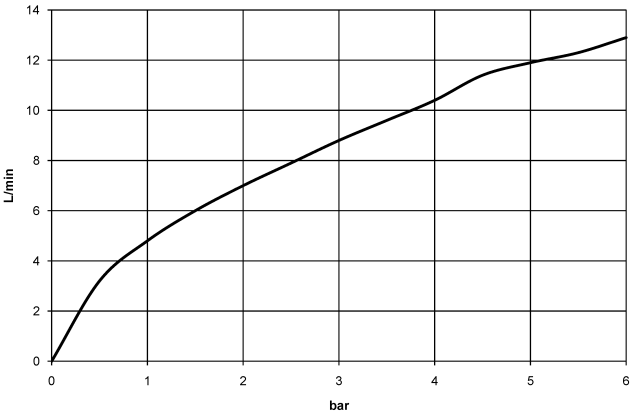


Strainer waste with control handle - Dark Chrome 10 712 970-19

33 860 875



Flow rate chart



Codes & Standards

EN 1717



TARA ULTRA Profi single-lever mixer - Dark Chrome

TARA ULTRA

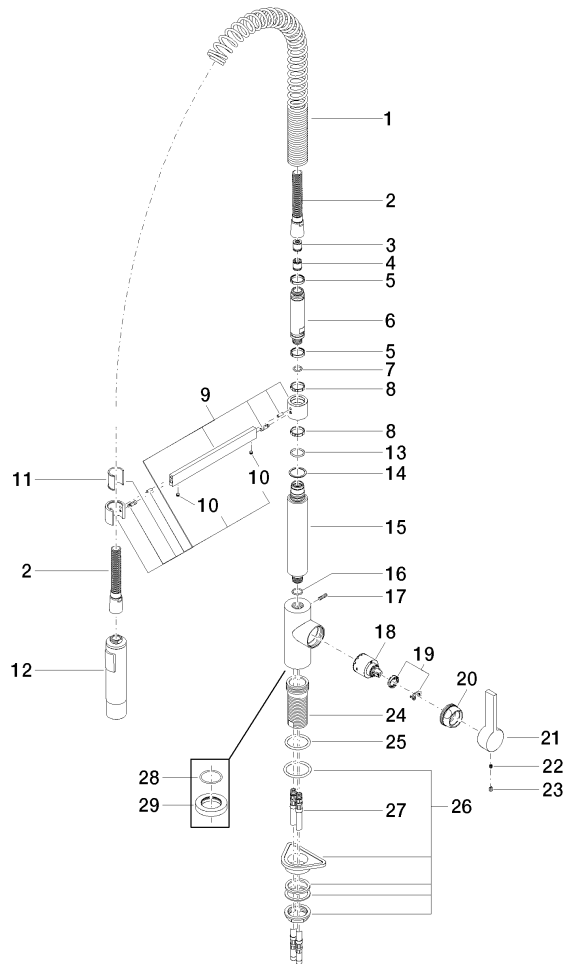
33 860 875

Certificates

Belgaqua_22_277_2

33 860 875

Parts for other
finishes can be found
here: [Chrome](#)





Spare parts list