

SYNC Profi single-lever mixer - Brushed Bronze

SYNC

33 865 895 Product version from 2/4/2019



- 200mm projection
- Flexible silicone hose with large operating range of up to 350 mm
- pivotable spout 360°
- Optional swivel limiter available with swivel limiter set 12 821 970 90
- This product can help a building meet the requirements of Green Building Rating Systems, e.g. LEED®, BREEAM®, DGNB
- air-enriched flow and spray flow
- height of mixer 451 mm
- height up to aerator 119 mm
- hole diameter 35 mm
- sprayface with anti-scaling system
- max. flow 9.5 l/min at 3 bar flow pressure
- lead-free

Intrinsic protection against back flow.

| | | |
|---|--------------------------------|---------------|
|  | Brushed Bronze | 33 865 895-42 |
|  | Chrome | 33 865 895-00 |
|  | Brushed Platinum | 33 865 895-06 |
|  | Platinum | 33 865 895-08 |
|  | Durabronze (23kt Gold) | 33 865 895-09 |
|  | Dark Chrome | 33 865 895-19 |
|  | Brushed Durabronze (23kt Gold) | 33 865 895-28 |
|  | Matte Black | 33 865 895-33 |
|  | Brushed Champagne (22kt Gold) | 33 865 895-46 |
|  | Champagne (22kt Gold) | 33 865 895-47 |
|  | Brushed Chrome | 33 865 895-93 |
|  | Brushed Dark Platinum | 33 865 895-99 |

Recommended miscellaneous

Swivel limitation set -

12 821 970 90



Recommended miscellaneous

**Dispenser without rosette -
Brushed Bronze**

82 424 970-42



Recommended miscellaneous

**Strainer waste with control handle
- Brushed Bronze**

10 712 970-42





Flow rate chart



Codes & Standards

DIN 4109

ISO 3822

Ü-Zeichen



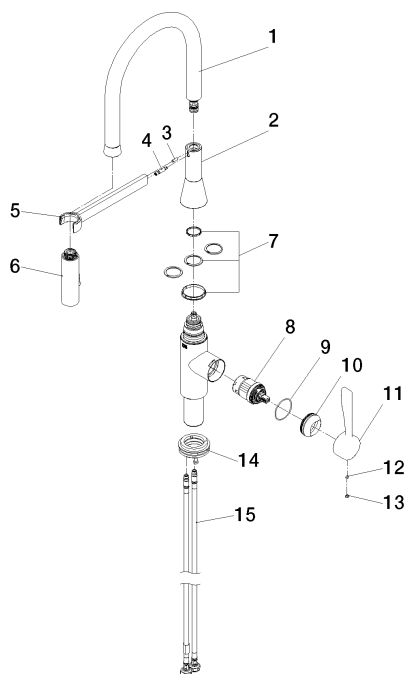
SYNC Profi single-lever mixer - Brushed Bronze

SYNC

33 865 895 Product version from 2/4/2019

Certificates and sustainability

LGA_29



Spare parts list

| No. | Item Number | Name | Quantity used | Delivery time |
|-----|--------------------|-------------------------|---------------|---------------|
| 1 | 90 30 02 100 00-42 | hose | 1.00 | 30 |
| 13 | 04 30 11 040 00 90 | fixing set | 1.00 | 2 |
| 8 | 09 14 10 190 90 | seal | 1.00 | 2 |
| 11 | 90 31 11 063 00 90 | pin | 1.00 | 2 |
| 7 | 90 15 05 064 05 90 | cartridge | 1.00 | 2 |
| 2 | 09 31 11 040 90 | pin | 1.00 | 2 |
| 3 | 09 31 11 209 90 | pin | 1.00 | 2 |
| 10 | 09 20 89 020-42 | handle | 1.00 | 60 |
| 4 | 90 17 20 045 00-42 | holder | 1.00 | 30 |
| 14 | 04 30 04 101 00 90 | hose | 2.00 | 2 |
| 5 | 04 12 11 150 00 90 | shower | 1.00 | 2 |
| 12 | 90 31 20 087 00-42 | plug | 1.00 | 30 |
| 9 | 09 28 30 030-42 | cover | 1.00 | 60 |
| 6 | 12 821 970 90 | Swivel limitation set - | 1.00 | 2 |