




EDITION PRO Shower thermostat for wall mounting - Brushed Chrome

34 442 626



- slide-on rosettes Ø 70 mm
- gauge 150 mm - 13 mm
- rotary diverter with volume control and shut-off function
- 3/8" shower outlet
- with volume control
- WRAS 2204005

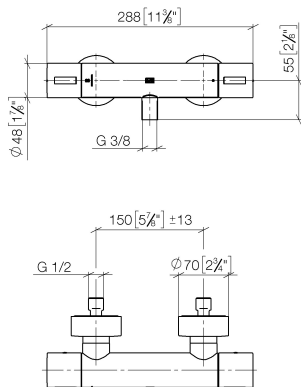
Intrinsic protection against back flow.

| | | |
|--|----------------|---------------|
|  | Brushed Chrome | 34 442 626-93 |
|  | Chrome | 34 442 626-00 |
|  | Matte Black | 34 442 626-33 |

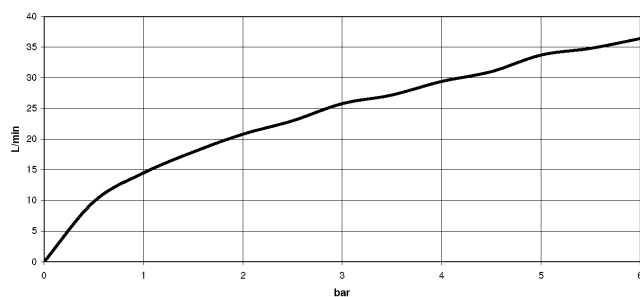
EDITION PRO Shower thermostat for wall mounting - Brushed Chrome

34 442 626

mm [inches]



Flow rate chart



Codes & Standards

| | | | |
|-----------------------------|-----------|----------|------------------------|
| DIN 4109 | EN 1717 | ISO 3822 | Scottish Water Byelaws |
| UK Water Supply Regulations | Ü-Zeichen | | |



EDITION PRO Shower thermostat for wall mounting - Brushed Chrome

34 442 626

Certificates

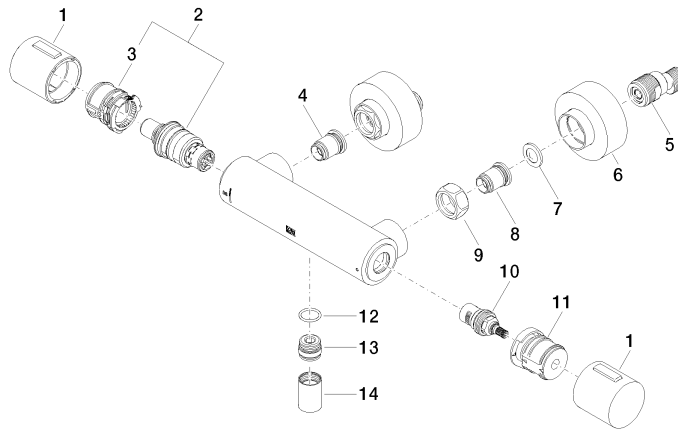
Belgaqua_21-384-2 LGA_29

WRAS_2204

EDITION PRO Shower thermostat for wall mounting - Brushed Chrome

34 442 626

Parts for other
finishes can be found
here: [Chrome](#)





EDITION PRO Shower thermostat for wall mounting - Brushed Chrome

34 442 626

Spare parts list

| No. | Item Number | Name | Quantity used | Delivery time |
|-----|--------------------|--------|---------------|---------------|
| | 90 17 33 015 00-93 | handle | 19 | 20 |