

Showerpipe with shower thermostat without hand shower FlowReduce - Brushed Bronze

IMO

34 459 979



Fits: IMO, LULU, TARA, LISSÉ, VAIA, META

- shower with fixed riser projection 453mm
- overhead shower: rain flow
- rain shower Ø 220 mm
- rain shower with anti-scale system
- max. rainshower flow 7 l/min
- rotary diverter with volume control and shut-off function
- slide-on rosettes Ø 70 mm
- height of fittings up to rain shower (bottom edge) 1009mm
- height of fittings up to top edge of elbow 1150mm
- gauge 150 mm - 13 mm
- metal shower hose 1750mm with integrated anti-twist protection
- 1/2" connection
- slide bar
- Pipe diameter 23.5 mm
- quick clearing
- This product can help a building meet the requirements of Green Building Rating Systems, e.g. LEED®, BREEAM®, DGNB
- WRAS 2204013

This article does not include a hand shower!

Intrinsic protection against back flow.

| | | |
|--|--------------------------------|---------------|
| | Brushed Bronze | 34 459 979-42 |
| | Chrome | 34 459 979-00 |
| | Brushed Platinum | 34 459 979-06 |
| | Platinum | 34 459 979-08 |
| | Dark Chrome | 34 459 979-19 |
| | Light Gold | 34 459 979-26 |
| | Brushed Light Gold | 34 459 979-27 |
| | Brushed Durabronze (23kt Gold) | 34 459 979-28 |
| | Matte Black | 34 459 979-33 |
| | Brushed Champagne (22kt Gold) | 34 459 979-46 |
| | Champagne (22kt Gold) | 34 459 979-47 |
| | Brushed Chrome | 34 459 979-93 |
| | Brushed Dark Platinum | 34 459 979-99 |

Required miscellaneous

| | | |
|--|--|-----------------------|
| | Hand shower FlowReduce - Brushed Bronze | 28 016 979-42 0010 |
|--|--|-----------------------|

Required miscellaneous

| | | |
|--|-------------------------------------|---------------|
| | Hand shower - Brushed Bronze | 28 012 979-42 |
|--|-------------------------------------|---------------|

Required miscellaneous

| | | |
|--|-------------------------------------|---------------|
| | Hand shower - Brushed Bronze | 28 017 979-42 |
|--|-------------------------------------|---------------|

Required miscellaneous

| | | |
|--|--|-----------------------|
| | Hand shower FlowReduce - Brushed Bronze | 28 018 979-42 0010 |
|--|--|-----------------------|

Required miscellaneous

| | | |
|--|-------------------------------------|---------------|
| | Hand shower - Brushed Bronze | 28 018 979-42 |
|--|-------------------------------------|---------------|

Required miscellaneous

| | | |
|--|--|-----------------------|
| | Hand shower FlowReduce - Brushed Bronze | 28 012 979-42 0010 |
|--|--|-----------------------|

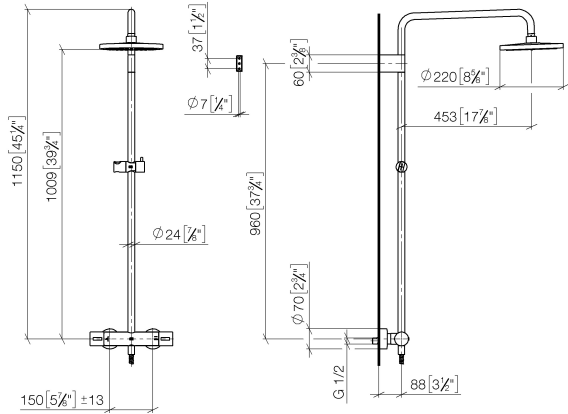
Required miscellaneous

| | | |
|--|-------------------------------------|---------------|
| | Hand shower - Brushed Bronze | 28 016 979-42 |
|--|-------------------------------------|---------------|

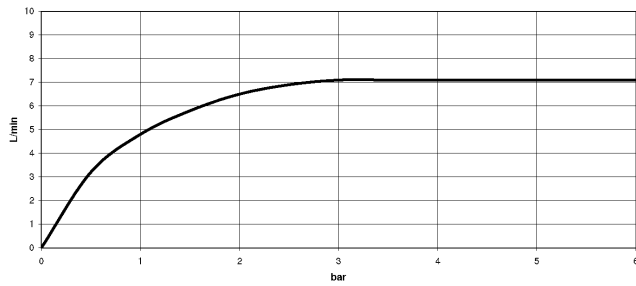
**Showerpipe with shower thermostat without hand shower FlowReduce -
Brushed Bronze**

IMO

34 459 979
mm [inches]
1:10



Flow rate chart



Codes & Standards

DIN 4109

ISO 3822

Scottish Water
Byelaws

UK Water Supply
Regulations

Ü-Zeichen



Showerpipe with shower thermostat without hand shower FlowReduce - Brushed Bronze

IMO

34 459 979

Certificates

WRAS_2204

LGA_38

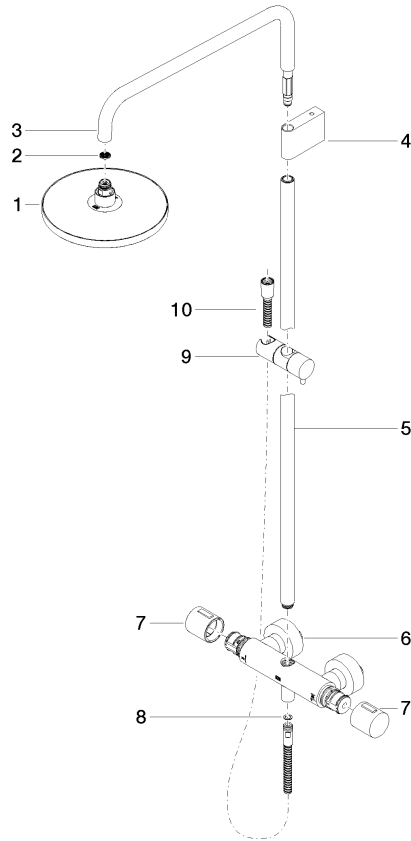
Showerpipe with shower thermostat without hand shower FlowReduce - Brushed Bronze

IMO

34 459 979

Product version from 4/1/2024

Parts for other
finishes can be found
here: [Chrome](#)





Showerpipe with shower thermostat without hand shower FlowReduce -
Brushed Bronze

IMO

34 459 979

Spare parts list

Product version from 4/1/2024

| No. | Item Number | Name | Quantity used | Delivery time |
|-----|--------------------|--------|---------------|---------------|
| | 90 12 05 092 20-42 | shower | 11 | 30 |