

Concealed single-lever mixer with cover plate with integrated shower connection - Brushed Champagne (22kt Gold)

SERIES SPECIFIC

36 046 660 Product version from 4/1/2024



- cover plate Ø 80 mm
- Intrinsic protection against back flow.**

Intrinsic protection against back flow.

| | | |
|---|-------------------------------------|---------------|
|  | Brushed Champagne (22kt Gold) | 36 046 660-46 |
|  | Chrome | 36 046 660-00 |
|  | Brushed Platinum | 36 046 660-06 |
|  | Platinum | 36 046 660-08 |
|  | Dark Chrome | 36 046 660-19 |
|  | Brushed Durabrass (23kt Gold) | 36 046 660-28 |
|  | Matte Black | 36 046 660-33 |
|  | Brushed Dark Brass | 36 046 660-39 |
|  | Brushed Bronze | 36 046 660-42 |
|  | Champagne (22kt Gold) | 36 046 660-47 |
|  | Brushed Chrome | 36 046 660-93 |
|  | Brushed Dark Platinum | 36 046 660-99 |

Required miscellaneous



Concealed wall mounting -

- min. recess depth 80 mm
- max. recess depth 105 mm

35 050 970 90

Concealed single-lever mixer with cover plate with integrated shower connection - Brushed Champagne (22kt Gold)

SERIES SPECIFIC

36 046 660 Product version from 4/1/2024
mm [inches]



Flow rate chart



Codes & Standards

DIN 4109 ISO 3822 Ü-Zeichen



Concealed single-lever mixer with cover plate with integrated shower connection - Brushed Champagne (22kt Gold)

SERIES SPECIFIC

36 046 660 Product version from 4/1/2024

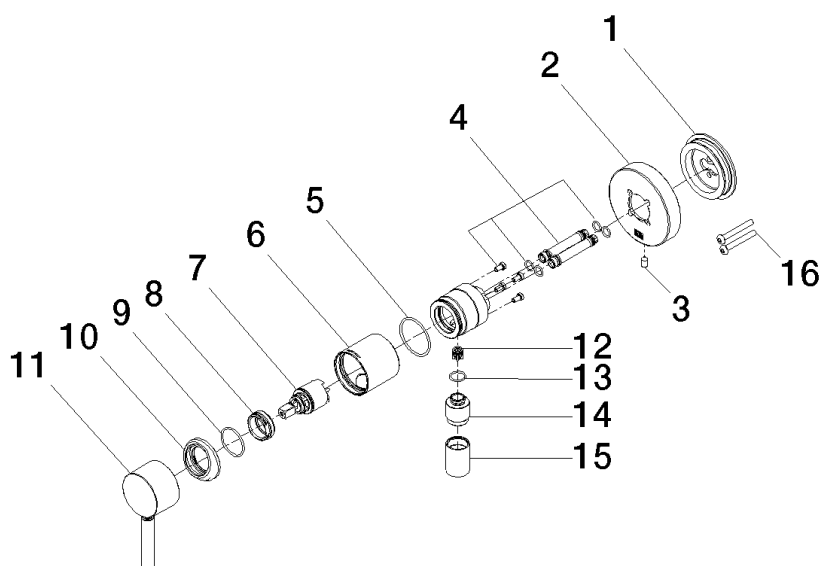
Certificates and sustainability

LGA_38

Concealed single-lever mixer with cover plate with integrated shower connection - Brushed Champagne (22kt Gold)

SERIES SPECIFIC

36 046 660 Product version from 4/1/2024



Spare parts list

| No. | Item Number | Name | Quantity used | Delivery time |
|--|--------------------|---------------------|---------------|---------------|
| 1 | 90 30 11 232 00 90 | disc | 1.00 | 2 |
| 16 | 90 30 30 229 00 90 | screw | 2.00 | 2 |
| 4 | 90 24 01 046 00 90 | connection | 2.00 | 2 |
| 9 | 09 14 10 120 90 | seal | 1.00 | 2 |
| 10 | 09 28 30 041-46 | cover | 1.00 | 30 |
| 12 | 09 23 01 131 90 | back-flow preventer | 1.00 | 2 |
| 11 | 90 20 66 006 00-46 | handle | 1.00 | 30 |
| 3 | 09 31 11 144 90 | pin | 1.00 | 2 |
| 7 | 90 15 05 044 00 90 | cartridge | 1.00 | 2 |
| 8 | 09 24 04 266 90 | nut | 1.00 | 2 |
| 5 | 09 14 10 111 90 | seal | 1.00 | 2 |
| 6 | 90 18 40 320 00-46 | sleeve | 1.00 | - |
| Spare part can no longer be ordered, please order the replacement item | | | | |
| 14 | 09 24 03 281-46 | nipple | 1.00 | 30 |
| 2 | 90 27 66 023 00-46 | rosette | 1.00 | - |
| Spare part can no longer be ordered, please order the replacement item | | | | |
| 15 | 90 21 02 069 00-46 | cover | 1.00 | 30 |
| 13 | 90 14 10 021 00 90 | seal | 1.00 | 2 |