



Concealed single-lever mixer with cover plate - Chrome

36 060 670 Product version from 6/1/2024



- cover plate 80 x 80 mm
- WRAS

	Chrome	36 060 670-00
	Brushed Platinum	36 060 670-06
	Platinum	36 060 670-08
	Dark Chrome	36 060 670-19
	Brushed Light Gold	36 060 670-27
	Brushed Durabrass (23kt Gold)	36 060 670-28
	Matte Black	36 060 670-33
	Brushed Champagne (22kt Gold)	36 060 670-46
	Champagne (22kt Gold)	36 060 670-47
	Brushed Chrome	36 060 670-93
	Brushed Dark Platinum	36 060 670-99

Required miscellaneous



- Concealed wall-mounted single-lever mixer -** 35 860 970 90
- max. recess depth mm
 - min. recess depth mm



Concealed single-lever mixer with cover plate - Chrome

36 060 670 Product version from 6/1/2024

mm [inches]



Codes & Standards

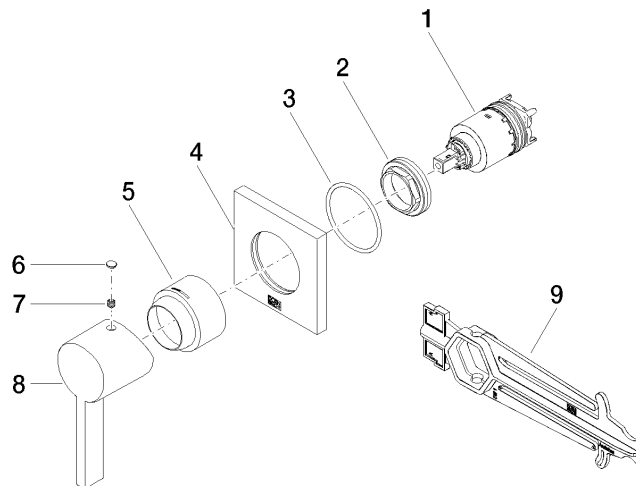
DIN 4109	ISO 3822	Scottish Water Byelaws	UK Water Supply Regulations
Ü-Zeichen			

Certificates

WRAS_2107	LGA_29
-----------	--------

Concealed single-lever mixer with cover plate - Chrome

36 060 670 Product version from 6/1/2024



Spare parts list

No.	Item Number	Name	Quantity used	Delivery time
1	90 15 05 064 01 90	cartridge	1	2
2	09 24 04 105 90	nut	1	2
3	90 14 10 049 00 90	seal	1	2
4	09 27 78 048-00	rosette	1	10
5	09 11 02 530-00	cover	1	10
6	90 31 20 087 00-00	plug	1	10
7	90 31 11 112 00 90	pin	1	2
8	09 20 67 004-00	handle	1	10
9	90 30 09 064 00 90	key	1	2