

VAIA Concealed single-lever mixer with cover plate - Brushed Platinum

VAIA

36 060 809

- cover plate 80 x 80 mm



	Brushed Platinum	36 060 809-06
	Chrome	36 060 809-00
	Platinum	36 060 809-08
	Dark Chrome	36 060 809-19
	Brushed Durabronze (23kt Gold)	36 060 809-28
	Brushed Bronze	36 060 809-42
	Brushed Champagne (22kt Gold)	36 060 809-46
	Champagne (22kt Gold)	36 060 809-47
	Brushed Dark Platinum	36 060 809-99

Required miscellaneous



- Concealed wall-mounted single-lever mixer -** 35 860 970 90
- max. recess depth 95 mm
 - min. recess depth 80 mm



VAIA Concealed single-lever mixer with cover plate - Brushed Platinum

VAIA

36 060 809

Codes & Standards

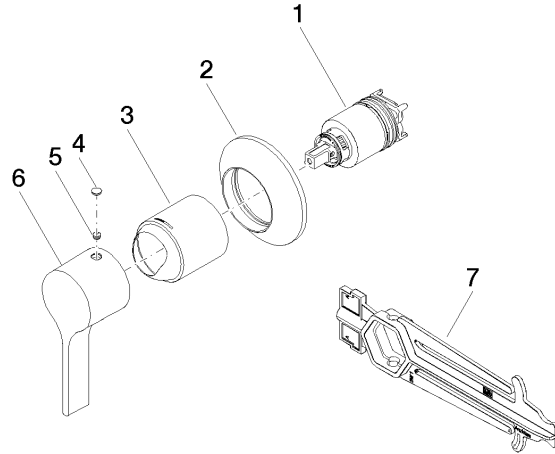
DIN 4109

ISO 3822

Ü-Zeichen

Certificates

LGA_29





VAIA Concealed single-lever mixer with cover plate - Brushed Platinum

VAIA

36 060 809

Spare parts list

No.	Item Number	Name	Quantity used	Delivery time
	90 15 05 064 01 90	cartridge	7	2