












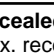
Concealed single-lever mixer with diverter - Brushed Dark Platinum

SERIES SPECIFIC

36 120 660 Product version up to 2/20/2020



- automatic diverter
- cover plate Ø 150 mm
- WRAS

	Brushed Dark Platinum	36 120 660-99
	Chrome	36 120 660-00
	Brushed Platinum	36 120 660-06
	Platinum	36 120 660-08
	Dark Chrome	36 120 660-19
	Light Gold	36 120 660-26
	Brushed Light Gold	36 120 660-27
	Brushed Durabronze (23kt Gold)	36 120 660-28
	Matte Black	36 120 660-33
	Brushed Dark Brass	36 120 660-39
	Brushed Bronze	36 120 660-42
	Brushed Champagne (22kt Gold)	36 120 660-46
	Champagne (22kt Gold)	36 120 660-47
	Brushed Chrome	36 120 660-93

Required miscellaneous



Concealed single-lever mixer with backflow preventor - 35 021 970 90

- max. recess depth 105 mm
- min. recess depth 80 mm

Recommended miscellaneous



xGRID Attachment set for integrating in the dry wall construction - 12 340 970 90

Required miscellaneous



Concealed single-lever mixer - 35 020 970 90

- max. recess depth 105 mm
- min. recess depth 80 mm

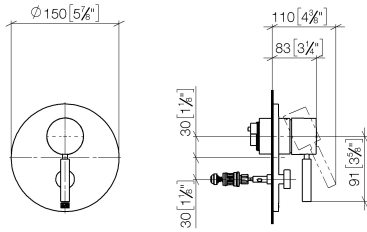
Required miscellaneous



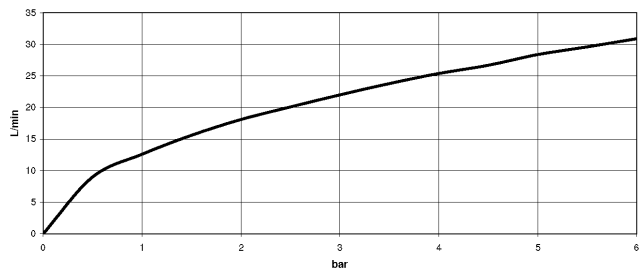
xGRID Installation track 555 mm - 12 360 970 90

36 120 660 Product version up to 2/20/2020

mm [inches]



Flow rate chart



Codes & Standards

DIN 4109

EN 817

ISO 3822

Scottish Water
Byelaws

UK Water Supply
Regulations

Ü-Zeichen



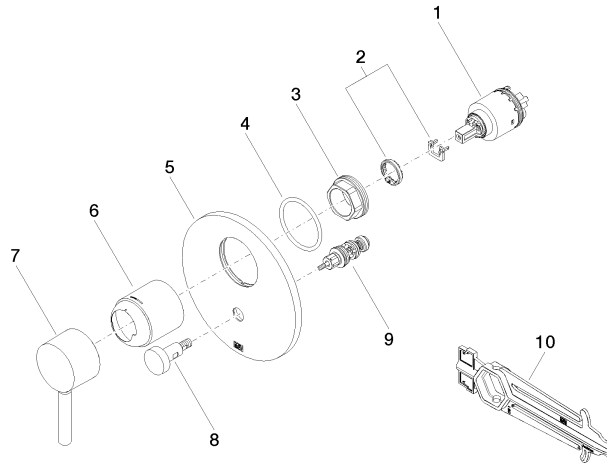
Concealed single-lever mixer with diverter - Brushed Dark Platinum

SERIES SPECIFIC

36 120 660 Product version up to 2/20/2020

Certificates and sustainability

DVGW_DW- 6512DN0	LGA_19	WRAS_2207
---------------------	--------	-----------



Spare parts list

No.	Item Number	Name	Quantity used	Delivery time
1	90 15 05 038 00 90	cartridge	1.00	60
5	09 11 02 261-99	plate	1.00	20
6	09 11 02 260-99	sleeve	1.00	20
8	90 31 09 139 00-99	pull-rod	1.00	20
4	09 14 10 084 90	seal	1.00	2
2	04 28 10 149 00 90	accessories	1.00	2
3	09 24 04 448 90	nut	1.00	2
9	90 21 34 081 00 90	diverter	1.00	2
7	90 20 66 004 00-99	handle	1.00	20
10	90 30 09 064 00 90	key	1.00	2