

Concealed single-lever mixer with diverter - Brushed Platinum

SERIES SPECIFIC


36 120 670    Product version up to 3/15/2019




- automatic diverter
- cover plate 150 x 90 mm
- WRAS

|   |                               |               |
|---|-------------------------------|---------------|
|    | Brushed Platinum              | 36 120 670-06 |
|    | Chrome                        | 36 120 670-00 |
|    | Platinum                      | 36 120 670-08 |
|    | Dark Chrome                   | 36 120 670-19 |
|    | Brushed Light Gold            | 36 120 670-27 |
|    | Brushed Durabrass (23kt Gold) | 36 120 670-28 |
|    | Matte Black                   | 36 120 670-33 |
|    | Brushed Champagne (22kt Gold) | 36 120 670-46 |
|    | Champagne (22kt Gold)         | 36 120 670-47 |
|  | Brushed Chrome                | 36 120 670-93 |
|  | Brushed Dark Platinum         | 36 120 670-99 |


Required miscellaneous

|   |  |               |
|---|--|---------------|
|  | <b>Concealed single-lever mixer with backflow preventor -</b><br>•max. recess depth 105 mm<br>•min. recess depth 80 mm | 35 021 970 90 |
|---|--|---------------|


Recommended miscellaneous

|   |  |               |
|---|--|---------------|
|  | <b>xGRID Attachment set for integrating in the dry wall construction -</b> | 12 340 970 90 |
|---|--|---------------|

Required miscellaneous

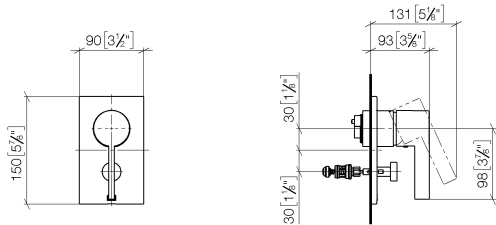
|   |  |               |
|---|--|---------------|
|  | <b>Concealed single-lever mixer -</b><br>•max. recess depth 105 mm<br>•min. recess depth 80 mm | 35 020 970 90 |
|---|--|---------------|

Required miscellaneous

|   |  |               |
|---|--|---------------|
|  | <b>xGRID Installation track 555 mm -</b> | 12 360 970 90 |
|---|--|---------------|

36 120 670 Product version up to 3/15/2019

mm [inches]



**Flow rate chart**



**Codes & Standards**

|          |          |                           |                                |
|----------|----------|---------------------------|--------------------------------|
| DIN 4109 | ISO 3822 | Scottish Water<br>Byelaws | UK Water Supply<br>Regulations |
|----------|----------|---------------------------|--------------------------------|

Ü-Zeichen



## Concealed single-lever mixer with diverter - Brushed Platinum

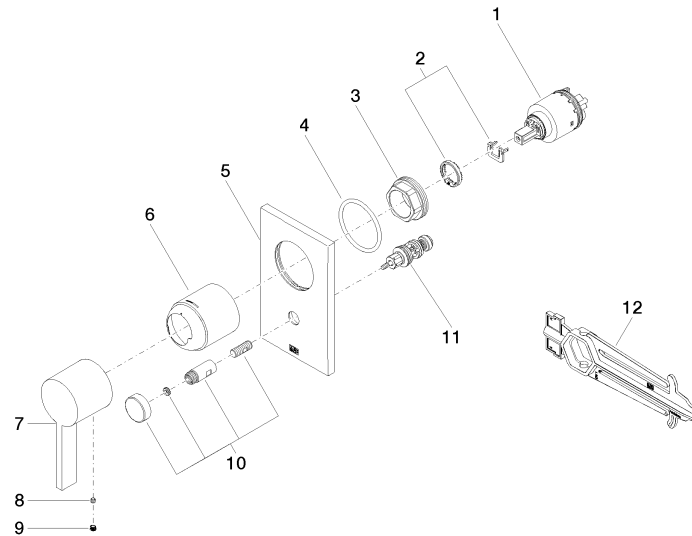
SERIES SPECIFIC

36 120 670 Product version up to 3/15/2019

Certificates and sustainability

LGA\_19

WRAS\_2207



## Spare parts list

| No. | Item Number           | Name        | Quantity used | Delivery time |
|-----|-----------------------|-------------|---------------|---------------|
|     | 10 90 31 09 139 00-06 | pull-rod    | 1.00          | 10            |
|     | 11 90 21 34 081 00 90 | diverter    | 1.00          | 2             |
|     | 2 04 28 10 149 00 90  | accessories | 1.00          | 2             |
|     | 7 09 20 67 007-06     | handle      | 1.00          | 10            |
|     | 3 09 24 04 448 90     | nut         | 1.00          | 2             |
|     | 4 09 14 10 084 90     | seal        | 1.00          | 2             |
|     | 6 09 11 02 260-06     | sleeve      | 1.00          | 10            |
|     | 8 09 31 11 099 90     | pin         | 1.00          | 2             |
|     | 5 09 11 02 258-06     | plate       | 1.00          | 10            |
|     | 1 90 15 05 038 00 90  | cartridge   | 1.00          | 60            |
|     | 12 90 30 09 064 00 90 | key         | 1.00          | 2             |
|     | 9 90 31 20 109 00 90  | plug        | 1.00          | 2             |