



LULU Concealed single-lever mixer with diverter - Brushed Platinum


36 122 710




- automatic diverter
- cover plate 150 x 90 mm

	Brushed Platinum	36 122 710-06
	Chrome	36 122 710-00


Required miscellaneous

	Concealed single-lever mixer - • max. recess depth mm • min. recess depth mm	35 020 970 90
---	---	---------------

Required miscellaneous

	xGRID Installation track 555 mm -	12 360 970 90
--	--	---------------

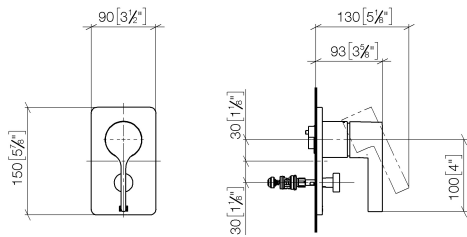
Recommended miscellaneous

	xGRID Attachment set for integrating in the dry wall construction -	12 340 970 90
---	--	---------------

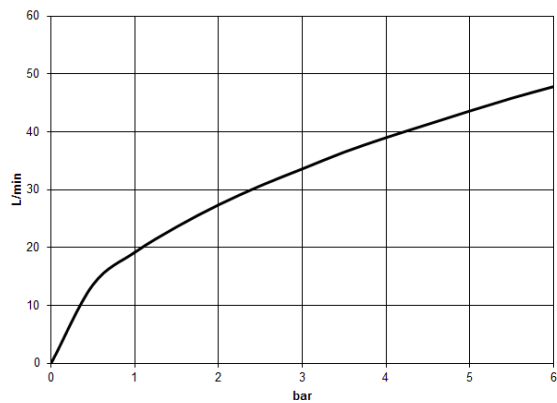
LULU Concealed single-lever mixer with diverter - Brushed Platinum

36 122 710

mm [inches]



Flow rate chart



Codes & Standards

DIN 4109

ISO 3822

Ü-Zeichen



LULU Concealed single-lever mixer with diverter - Brushed Platinum

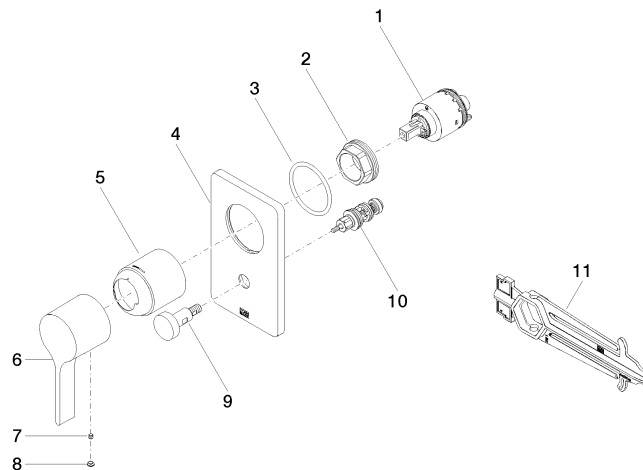
36 122 710

Certificates

LGA_29

LULU Concealed single-lever mixer with diverter - Brushed Platinum

36 122 710



Spare parts list

No.	Item Number	Name	Quantity used	Delivery time
1	90 15 05 039 00 90	cartridge	1	2
2	09 24 04 448 90	nut	1	2
3	09 14 10 084 90	seal	1	2
4	09 11 02 328-06	plate	1	10
5	09 11 02 260-06	sleeve	1	10
6	09 20 80 023-06	handle	1	10
7	09 31 11 099 90	pin	1	2
8	90 31 20 087 00-06	plug	1	10
9	90 31 09 139 00-06	pull-rod	1	10
10	90 21 34 081 00 90	diverter	1	2
11	90 30 09 064 00 90	key	1	2