


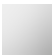
LULU Concealed two-way diverter - Brushed Platinum

LULU

36 200 710    Product version from 4/1/2022



- rotary diverter
- rosette 60 x 78 mm
- WRAS

	Brushed Platinum	36 200 710-06
	Chrome	36 200 710-00

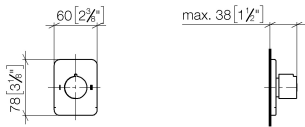
Required miscellaneous



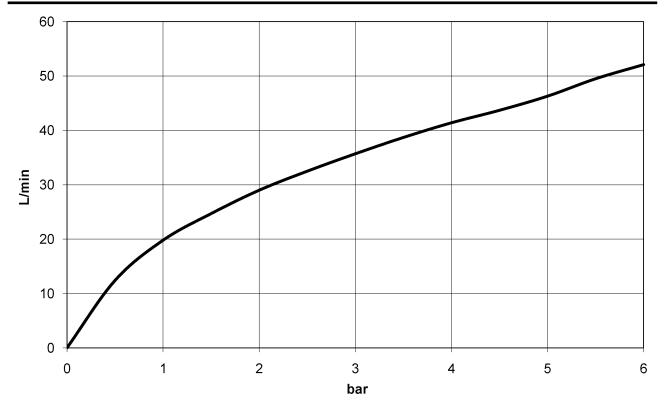
- Concealed two-way diverter -**

35 202 970 90
- max. recess depth 155 mm
  - min. recess depth 85 mm

mm [inches]



Flow rate chart



Codes & Standards

DIN 4109	ISO 3822	Scottish Water Byelaws	UK Water Supply Regulations
----------	----------	------------------------	-----------------------------

Ü-Zeichen



## LULU Concealed two-way diverter - Brushed Platinum

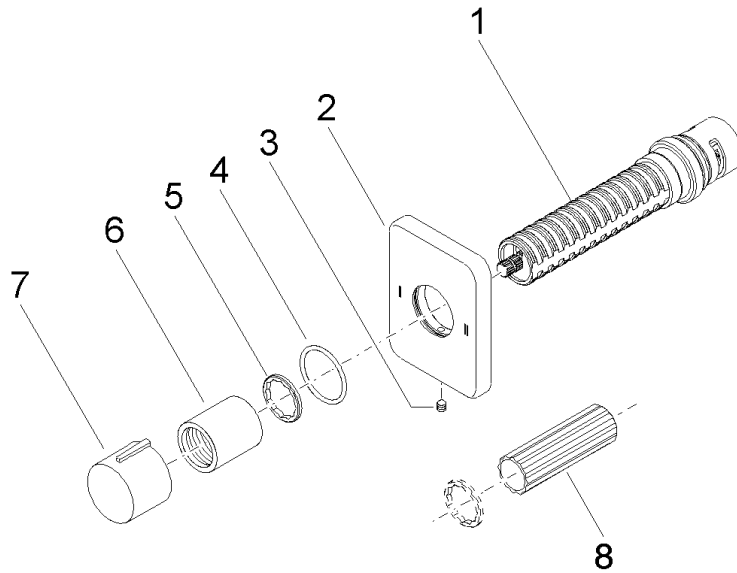
LULU

36 200 710 Product version from 4/1/2022

Certificates and sustainability

LGA\_38

WRAS\_2307



## Spare parts list

No.	Item Number	Name	Quantity used	Delivery time
6	09 21 02 070-06	cover	1.00	10
5	09 16 01 025 90	ring	1.00	2
2	09 27 71 114-06	rosette	1.00	60
7	09 20 97 030-06	handle	1.00	10
1	90 90 03 304 10 90	diverter	1.00	2
4	90 14 10 063 00 90	seal	1.00	2
8	90 30 09 010 00 90	key	1.00	2
3	90 31 11 007 00 90	pin	1.00	2