







CL.1 Concealed two-way diverter - Dark Chrome

36 201 705    Product version from 4/1/2022



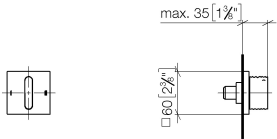
- rotary diverter
- rosette 60 x 60 mm
- WRAS

	Dark Chrome	36 201 705-19
	Chrome	36 201 705-00
	Brushed Platinum	36 201 705-06
	Brushed Champagne (22kt Gold)	36 201 705-46
	Champagne (22kt Gold)	36 201 705-47
	Brushed Dark Platinum	36 201 705-99

# CL.1 Concealed two-way diverter - Dark Chrome

36 201 705    Product version from 4/1/2022

mm [inches]



Flow rate chart



## Codes & Standards

DIN 4109	ISO 3822	Scottish Water Byelaws	UK Water Supply Regulations
----------	----------	---------------------------	--------------------------------

Ü-Zeichen



## CL.1 Concealed two-way diverter - Dark Chrome

---

36 201 705 Product version from 4/1/2022

### Certificates

---

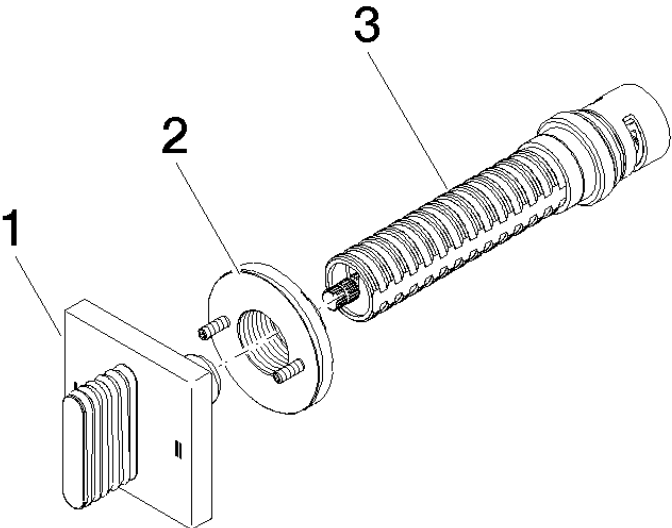
LGA\_38

WRAS\_2307

# CL.1 Concealed two-way diverter - Dark Chrome

36 201 705    Product version from 4/1/2022

Parts for other  
finishes can be found  
here: [Chrome](#)



## Spare parts list

No.	Item Number	Name	Quantity used	Delivery time
1	90 20 70 055 08-19	handle	1	-
Spare part can no longer be ordered, please order the replacement item				
2	90 21 02 181 00 90	disc	1	2
3	90 90 03 304 10 90	diverter	1	2