

## TARA Concealed three-way diverter - Brushed Dark Brass

TARA

36 210 882 Product version from 4/1/2022



- rotary diverter
- rosette 60 mm
- WRAS

|   |                                |               |
|---|--------------------------------|---------------|
|    | Brushed Dark Brass             | 36 210 882-39 |
|    | Chrome                         | 36 210 882-00 |
|    | Brushed Platinum               | 36 210 882-06 |
|    | Platinum                       | 36 210 882-08 |
|    | Dark Chrome                    | 36 210 882-19 |
|    | Brushed Durabronze (23kt Gold) | 36 210 882-28 |
|    | Matte Black                    | 36 210 882-33 |
|    | Brushed Bronze                 | 36 210 882-42 |
|    | Brushed Champagne (22kt Gold)  | 36 210 882-46 |
|  | Champagne (22kt Gold)          | 36 210 882-47 |
|  | Brushed Chrome                 | 36 210 882-93 |
|  | Brushed Dark Platinum          | 36 210 882-99 |

mm [inches]



**Flow rate chart**



**Codes & Standards**

DIN 4109

ISO 3822

Scottish Water  
Byelaws

UK Water Supply  
Regulations

Ü-Zeichen



## TARA Concealed three-way diverter - Brushed Dark Brass

---

TARA

36 210 882 Product version from 4/1/2022

### Certificates and sustainability

---

LGA\_38

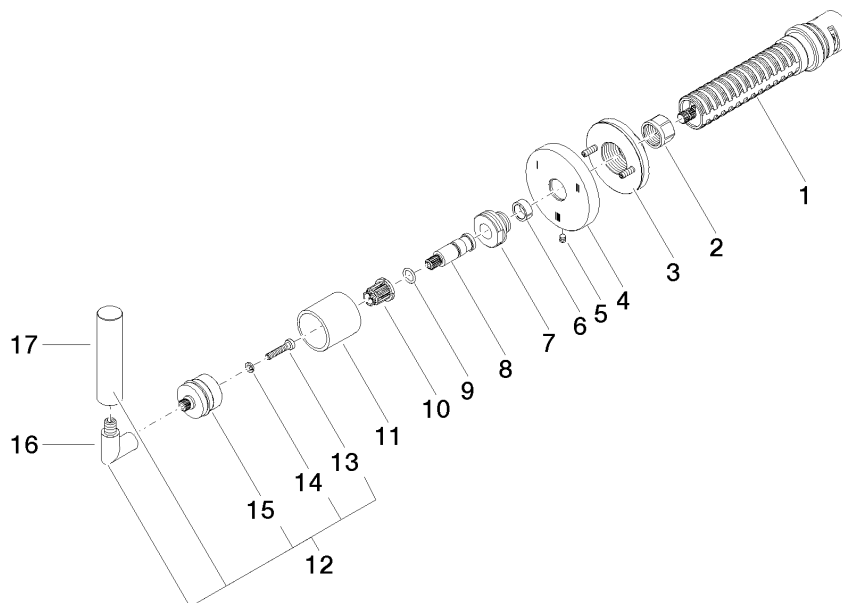
WRAS\_2307

# TARA Concealed three-way diverter - Brushed Dark Brass

TARA

36 210 882 Product version from 4/1/2022

Parts for other  
finishes can be found  
here: [Chrome](#)



## Spare parts list

| No.  | Item Number           | Name       | Quantity used | Delivery time |
|--|-----------------------|------------|---------------|---------------|
|  | 5 09 31 11 294 90     | pin        | 1.00          | 2             |
|  | 2 90 23 30 023 00 90  | nut        | 1.00          | 2             |
|  | 11 09 21 02 144-39    | sleeve     | 1.00          | 60            |
|  | 6 90 14 15 020 03 90  | ring       | 1.00          | 2             |
|  | 8 09 29 06 022 90     | spindle    | 1.00          | 2             |
|  | 9 90 14 10 060 00 90  | seal       | 1.00          | 2             |
|  | 16 04 18 20 022 00-39 | angle      | 1.00          | -             |
| Spare part can no longer be ordered, please order the replacement item |                       |            |               |               |
|  | 3 90 21 02 181 00 90  | disc       | 1.00          | 2             |
|  | 17 09 20 88 052-39    | handle     | 1.00          | 60            |
|  | 10 90 12 12 002 00 90 | fixing cap | 1.00          | 2             |
|  | 14 90 30 11 029 00 90 | disc       | 1.00          | 2             |
|  | 1 90 90 03 303 10 90  | diverter   | 1.00          | 2             |
|  | 15 90 12 12 219 00-39 | base       | 1.00          | 30            |
|  | 7 09 24 05 002 90     | nipple     | 1.00          | 2             |
|  | 13 90 30 30 075 00 90 | screw      | 1.00          | 2             |
|  | 12 04 20 88 052 10-39 | handle     | 1.00          | 60            |
|  | 4 09 27 89 117-39     | rosette    | 1.00          | 60            |