

## Bath spout with pop-up waste and overflow - Matte Black

SERIES-VARIOUS

36 247 970 Product version from 3/13/2017



- drain Ø 52mm
- max. flow 27.8 l/min at 3 bar flow pressure

**Also suitable for king-size baths.**

**In combination with 35 021 970 90 concealed single-lever mixer, is intrinsically safe under DIN EN 1717. Alternatively, ensure protection with vacuum breaker 35 150 970 90.**

Also suitable for king-size baths.

In combination with 35 021 970 90 concealed single-lever mixer, is intrinsically safe under DIN EN 1717. Alternatively, ensure protection with vacuum breaker 35 150 970 90.

	Matte Black	36 247 970-33
	Chrome	36 247 970-00
	Brushed Platinum	36 247 970-06
	Platinum	36 247 970-08
	Durabronze (23kt Gold)	36 247 970-09
	Dark Chrome	36 247 970-19
	Light Gold	36 247 970-26
	Brushed Light Gold	36 247 970-27
	Brushed Durabronze (23kt Gold)	36 247 970-28
	Brushed Dark Bronze	36 247 970-39
	Brushed Bronze	36 247 970-42
	Brushed Champagne (22kt Gold)	36 247 970-46
	Champagne (22kt Gold)	36 247 970-47
	Brushed Chrome	36 247 970-93
	Brushed Dark Platinum	36 247 970-99

### Required miscellaneous



**Bath spout with pop-up waste and overflow -** 35 248 970 90  
 •bowden cable length 725 mm

### Required miscellaneous

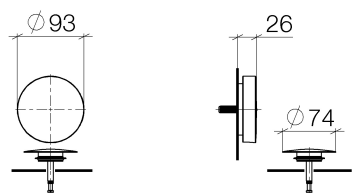
**Vacuum breaker - Matte Black** 36 150 970-33

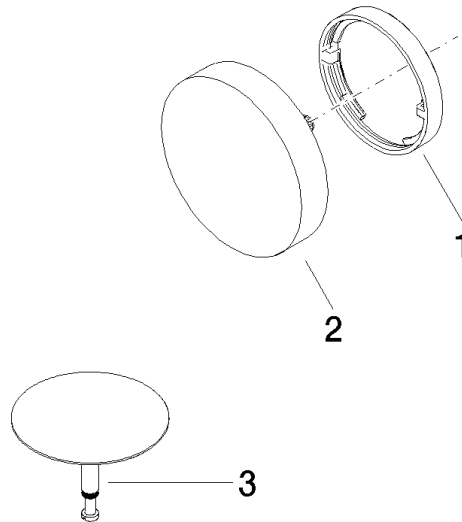


### Required miscellaneous



**Vacuum breaker -** 35 150 970 90  
 •3/4" connection





## Spare parts list

No.	Item Number	Name	Quantity used	Delivery time
2	90 20 97 061 00-33	handle	1.00	30
1	09 11 01 124-33	cover	1.00	30
3	04 31 20 031 48-33	plug	1.00	30