

**CYO Wall-mounted basin mixer without pop-up waste - Durabrand / Brushed
Durabrand (23kt Gold)**

36 707 811



- 160mm projection
 - fixed spout
 - rectangular, air-enriched flow
 - hole diameter valve 37 mm
 - hole diameter spout 37 mm
 - handle Ø 60mm
 - max. flow 4.5 l/min
 - lead-free
 - This product can help a building meet the requirements of Green Building Rating Systems, e.g. LEED®, BREEAM®, DGNB
 - WRAS
- NOTE: The handle inserts must be ordered separately from the fittings!**
- NOTE: The handle inserts must be ordered separately from the fittings!

	Durabrand / Brushed Durabrand (23kt Gold)	36 707 811-38
	Chrome	36 707 811-00
	Brushed Platinum	36 707 811-06
	Dark Chrome	36 707 811-19
	Brushed Durabrand (23kt Gold)	36 707 811-28
	Platinum / Brushed Platinum	36 707 811-36
	Brushed Dark Platinum	36 707 811-99

Required miscellaneous



- Concealed wall-mounted mixer
centred spout -** 35 700 970 90
- max. recess depth mm
 - min. recess depth mm

Required miscellaneous

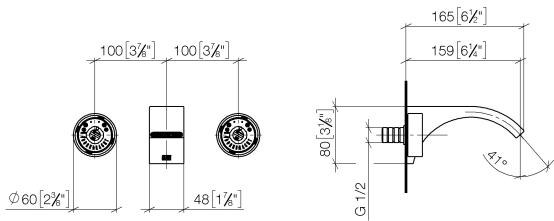


- Concealed wall-mounted mixer
variable positioning -** 35 720 970 90
- min. recess depth mm
 - max. recess depth mm

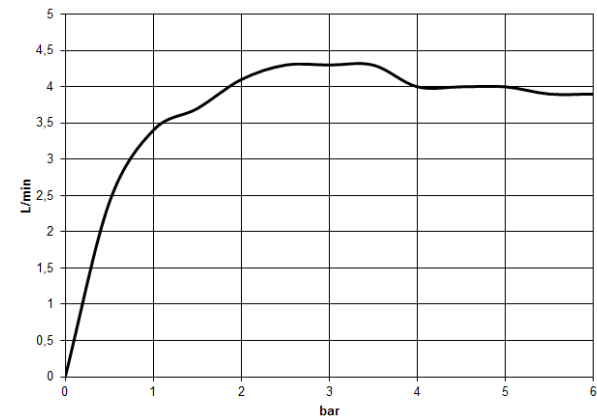


CYO Wall-mounted basin mixer without pop-up waste - Durabron / Brushed
Durabron (23kt Gold)

36 707 811
mm [inches]



Flow rate chart



Codes & Standards

DIN 4109	ISO 3822	NSF372	NSF61
Scottish Water Byelaws	UK Water Supply Regulations	Ü-Zeichen	



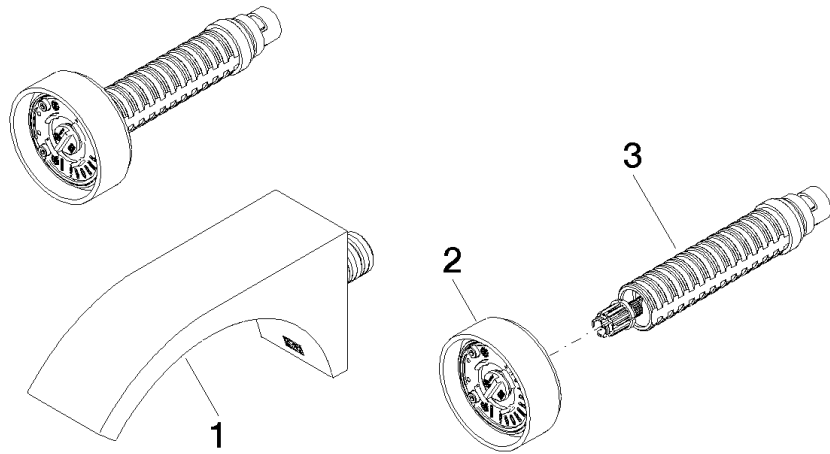
CYO Wall-mounted basin mixer without pop-up waste - Durabrass / Brushed
Durabrass (23kt Gold)

36 707 811
Certificates

WRAS_2111	IAPMO_N-4976	IAPMO_6397	LGA_38
-----------	--------------	------------	--------

**CYO Wall-mounted basin mixer without pop-up waste - Durabross / Brushed
Durabross (23kt Gold)**

36 707 811



Spare parts list

No.	Item Number	Name	Quantity used	Delivery time
1	13 800 811-38	CYO Wall-mounted basin spout without pop-up waste - Durabross / Brushed Durabross (23kt Gold)	1	20
2	90 18 40 290 00-38	handle	1	20
3	90 90 03 171 01 90	top	1	2