




**EDITION PRO Wall-mounted single-lever basin mixer without pop-up waste -
Brushed Chrome**

36 810 626



- 170mm projection
- fixed spout
- circular, air-enriched flow
- hole diameter spout 37 mm
- hole diameter single-lever mixer 57 mm
- rosette for spout Ø 55mm
- rosette for mixer Ø 78mm
- max. flow 7 l/min
- lead-free
- WRAS 2107048

| | | |
|--|----------------|---------------|
|  | Brushed Chrome | 36 810 626-93 |
|  | Chrome | 36 810 626-00 |
|  | Matte Black | 36 810 626-33 |

Required miscellaneous



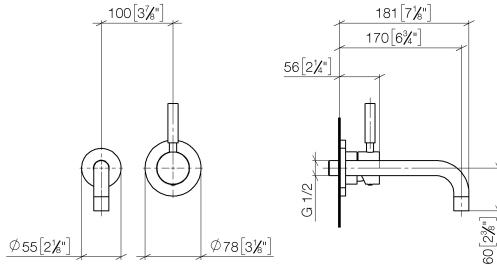
EDITION PRO Concealed wall-mounted single-lever mixer mixer on right - 35 870 970 90

- max. recess depth 95 mm
- min. recess depth 80 mm

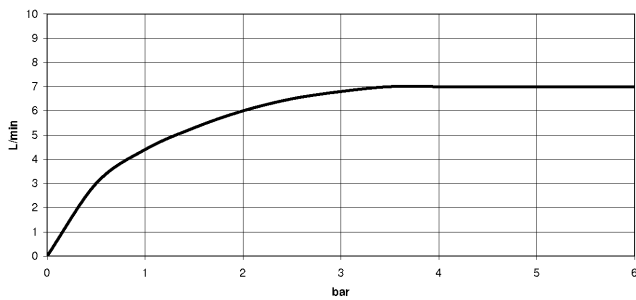
EDITION PRO Wall-mounted single-lever basin mixer without pop-up waste - Brushed Chrome

36 810 626

mm [inches]



Flow rate chart



Codes & Standards

DIN 4109

ISO 3822

Scottish Water
Byelaws

UK Water Supply
Regulations

Ü-Zeichen



EDITION PRO Wall-mounted single-lever basin mixer without pop-up waste - Brushed Chrome

36 810 626

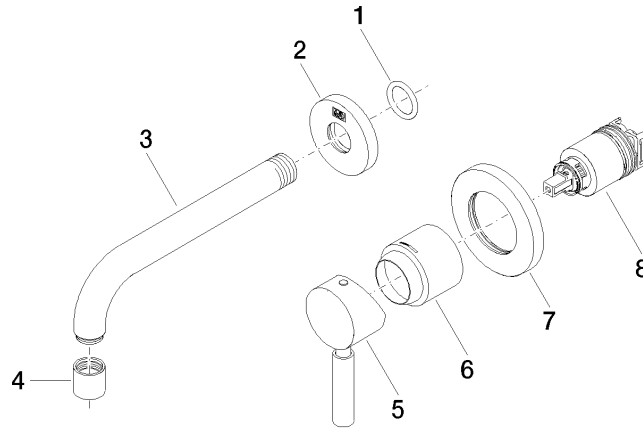
Certificates

LGA_9

WRAS_2107

EDITION PRO Wall-mounted single-lever basin mixer without pop-up waste - Brushed Chrome

36 810 626





EDITION PRO Wall-mounted single-lever basin mixer without pop-up waste -
Brushed Chrome

36 810 626

Spare parts list

| No. | Item Number | Name | Quantity used | Delivery time |
|-----|--------------------|------|---------------|---------------|
| | 90 14 10 026 00 90 | seal | 8 | 2 |