




DORNBRACHT YARRE Wall-mounted single-lever basin mixer without pop-up waste - Soft Black

36 860 832



- 170mm projection
- fixed spout
- circular, air-enriched flow
- hole diameter spout 37 mm
- hole diameter single-lever mixer 57 mm
- rosette for mixer 78 x 78mm
- max. flow 6.8 l/min
- lead-free
- rosette for spout Ø 60mm
- rosette for mixer Ø 78mm
- WRAS 240504010

| | | |
|--|------------|---------------|
|  | Soft Black | 36 860 832-69 |
|  | Chrome | 36 860 832-00 |

Required miscellaneous

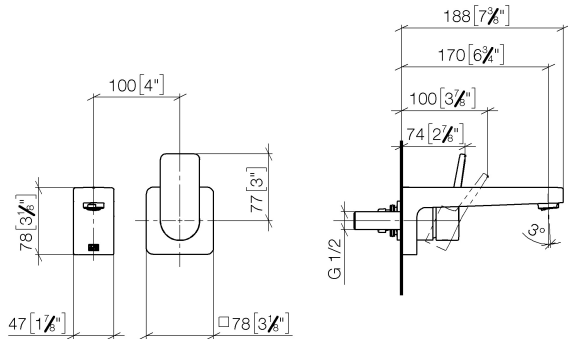


EDITION PRO Concealed wall-mounted single-lever mixer mixer on right - 35 870 970 90

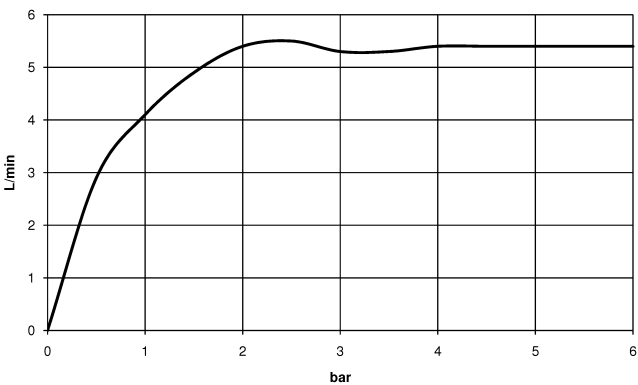


DORNBRACHT YARRE Wall-mounted single-lever basin mixer without pop-up waste - Soft Black

36 860 832
mm [inches]



Flow rate chart



Codes & Standards

| | | | |
|-----------|-------------|------------------------|-----------------------------|
| DIN 4109 | ISO 3822 | Scottish Water Byelaws | UK Water Supply Regulations |
| Ü-Zeichen | XP P 41-280 | | |



DORNBRACHT YARRE Wall-mounted single-lever basin mixer without pop-up waste - Soft Black

36 860 832

Certificates

ACS_23 ACC NY

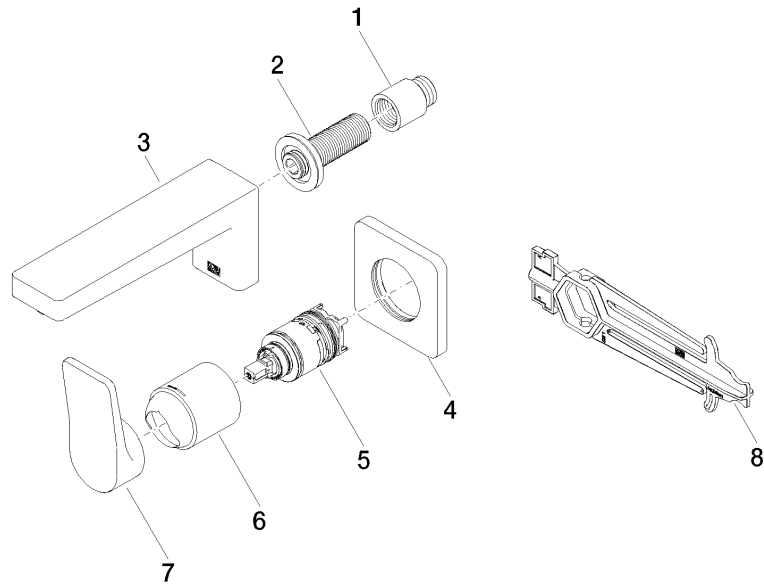
AbP_10

WRAS_240504

DORNBACHT YARRE Wall-mounted single-lever basin mixer without pop-up waste - Soft Black

36 860 832

Product version from 1/1/2023





DORNBRACHT YARRE Wall-mounted single-lever basin mixer without pop-up waste - Soft Black

36 860 832

Spare parts list

Product version from 1/1/2023

| No. | Item Number | Name | Quantity used | Delivery time |
|-----|-----------------|-----------|---------------|---------------|
| | 09 24 03 080 90 | extension | 8 | 2 |