

## LISSE Wall-mounted single-lever basin mixer without pop-up waste - Brushed Dark Platinum

LISSE

36 860 845



- 170mm projection
- fixed spout
- circular, air-enriched flow
- hole diameter spout 37 mm
- hole diameter single-lever mixer 57 mm
- rosette 78 x 78 mm
- max. flow 5.7 l/min
- lead-free
- This product can help a building meet the requirements of Green Building Rating Systems, e.g. LEED®, BREEAM®, DGNB
- WRAS 2107018

	Brushed Dark Platinum	36 860 845-99
	Chrome	36 860 845-00
	Brushed Platinum	36 860 845-06
	Dark Chrome	36 860 845-19
	Matte Black	36 860 845-33
	Brushed Chrome	36 860 845-93

### Required miscellaneous



- Concealed wall-mounted single-lever mixer mixer on right -** 35 816 970 90
- NOTE: Not suitable for concealed installation. Connection by means of angle valves, mounted with screws to back wall.

### Recommended miscellaneous



- Basin Waste with knob for deck mounting 1 1/4" - Brushed Dark Platinum** 10 200 970-99

### Required miscellaneous



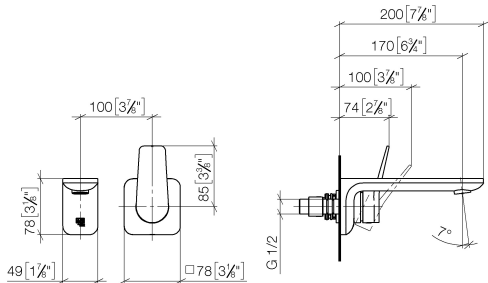
- Concealed wall-mounted single-lever mixer -** 35 860 970 90
- min. recess depth 80 mm
  - max. recess depth 95 mm



LISSE Wall-mounted single-lever basin mixer without pop-up waste - Brushed Dark Platinum

LISSE

36 860 845  
mm [inches]



Flow rate chart



Codes & Standards

EN 817

EPA WaterSense

NSF372

NSF61

Scottish Water  
Byelaws

UK Water Supply  
Regulations

WaterSense





LISSE Wall-mounted single-lever basin mixer without pop-up waste - Brushed  
Dark Platinum

LISSE

36 860 845

Certificates

WRAS\_2107

IAPMO\_8834

IAPMO\_6397

IAPMO\_N-4976

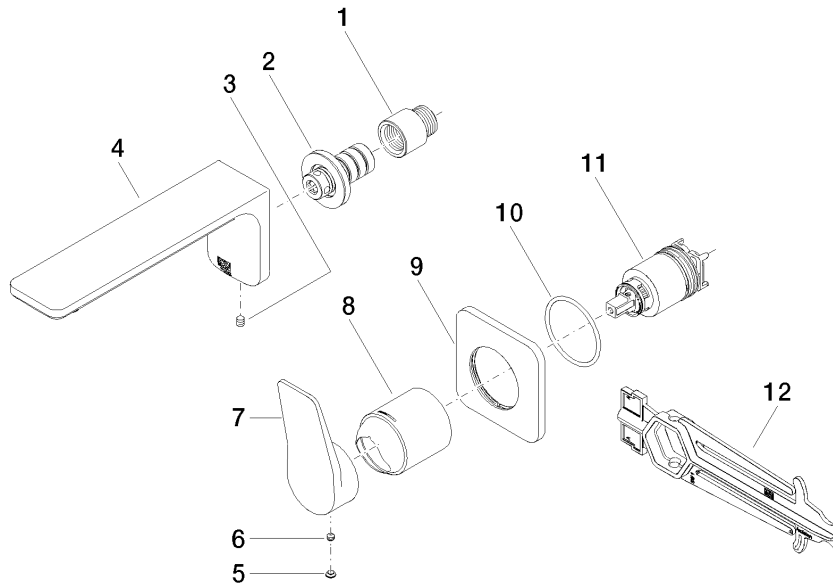
DVGW\_DW-  
6512DN0

**LISSE Wall-mounted single-lever basin mixer without pop-up waste - Brushed  
Dark Platinum**

LISSE

36 860 845

**Product version from 4/1/2024**





LISSE Wall-mounted single-lever basin mixer without pop-up waste - Brushed  
Dark Platinum

LISSE

36 860 845

Spare parts list

Product version from 4/1/2024

No.	Item Number	Name	Quantity used	Delivery time
	09 24 03 072 10 90	nipple	12	2