

## MEM Wall-mounted single-lever basin mixer with cover plate without pop-up waste - Chrome

36 863 782



- 177mm projection
- fixed spout
- rectangular, air-enriched flow
- hole diameter spout 37 mm
- hole diameter single-lever mixer 57 mm
- cover plate 80 x 180 mm
- max. flow 5.7 l/min
- lead-free
- This product can help a building meet the requirements of Green Building Rating Systems, e.g. LEED®, BREEAM®, DGNB
- WRAS

### Required miscellaneous



#### **Concealed wall-mounted single-lever mixer mixer on right -**

35 816 970 90

- NOTE: Not suitable for concealed installation. Connection by means of angle valves, mounted with screws to back wall.

### Required miscellaneous



#### **Concealed wall-mounted single-lever mixer -**

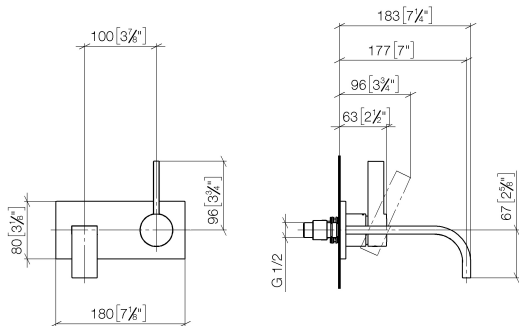
35 860 970 90

- max. recess depth mm
- min. recess depth mm
- mixer can be placed above, to the left or to the right of the spout.

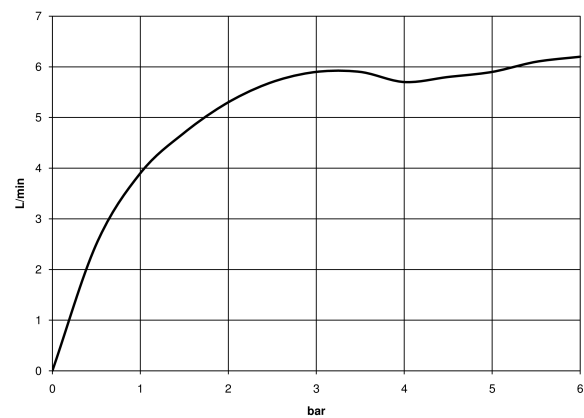


**MEM Wall-mounted single-lever basin mixer with cover plate without pop-up waste - Chrome**

36 863 782  
mm [inches]



**Flow rate chart**



**Codes & Standards**

DIN 4109

EN 817

ISO 3822

Scottish Water  
Byelaws

UK Water Supply  
Regulations

Ü-Zeichen





MEM Wall-mounted single-lever basin mixer with cover plate without pop-up  
waste - Chrome

---

36 863 782  
Certificates

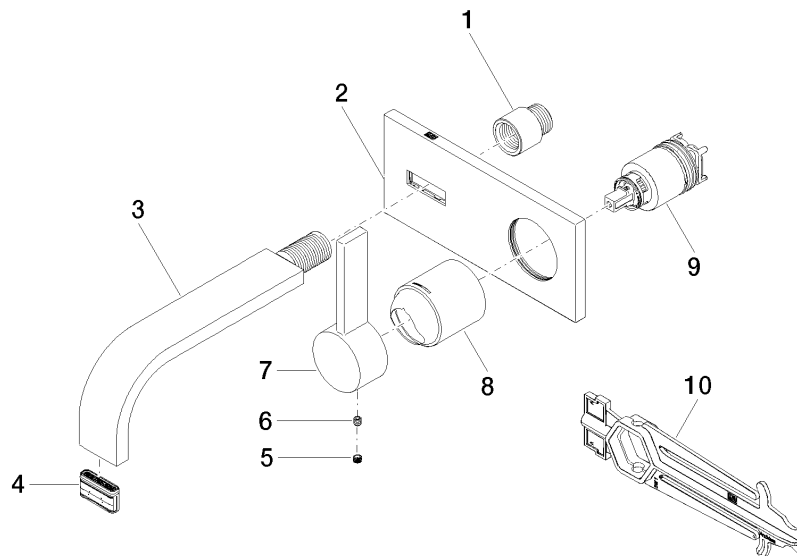
---

LGA_29	DVGW_DW- 6512DN0	WRAS_2107
--------	---------------------	-----------



## MEM Wall-mounted single-lever basin mixer with cover plate without pop-up waste - Chrome

36 863 782



### Spare parts list

No.	Item Number	Name	Quantity used	Delivery time
1	09 24 03 072 10 90	nipple	1	2
2	90 11 01 186 00-00	plate	1	10
3	04 28 22 150 10-00	spout	1	10
4	90 29 03 109 00 90	aerator	1	2
5	90 31 20 109 00 90	plug	1	2
6	90 31 11 030 00 90	pin	1	2
7	09 20 78 058-00	handle	1	10
8	09 11 02 288-00	cover	1	10
9	90 15 05 064 01 90	cartridge	1	2
10	90 30 09 064 00 90	key	1	2