


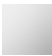




Towel warmer , 6-fold , projection left , without control element - Matte Black

SERIES SPECIFIC

83 306 979    Product version from 4/1/2025



- gauge 120 mm
  - width 610mm
  - height 680 mm
  - rosette Ø 80 mm
  - Projection: 67 mm
  - Degree of protection IP 44, CE marking
  - Output per towel bar: 15 watts
  - Rated voltage: 220 - 240 V AC
  - Without control element**
  - Activation must be handled by the customer**
  - Note: Different conditioning.**
  - This appliance is a stationary electric space heater and, in order to comply with the mandatory ecodesign requirements of Commission Regulation (EU) 2024/1103, must be equipped with at least one control with control function TW(f2).**
- Without control element
- Activation must be handled by the customer
- Note: Different conditioning.
- This appliance is a stationary electric space heater and, in order to comply with the mandatory ecodesign requirements of Commission Regulation (EU) 2024/1103, must be equipped with at least one control with control function TW(f2).

	Matte Black	83 306 979-33
	Chrome	83 306 979-00
	Dark Chrome	83 306 979-19
	Brushed Champagne (22kt Gold)	83 306 979-46
	Brushed Chrome	83 306 979-93
	Brushed Dark Platinum	83 306 979-99

Required miscellaneous



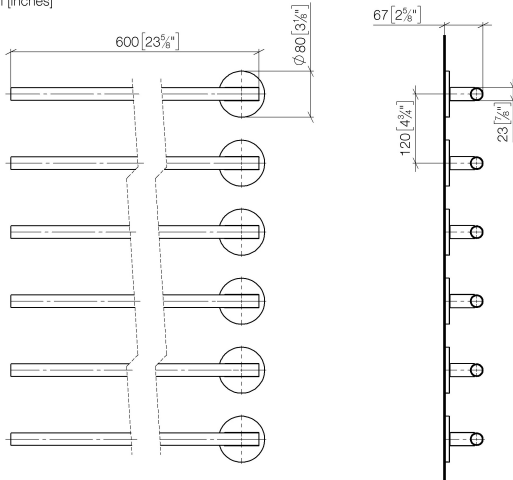
- Concealed wall installation box for towel warmer , 6-fold , without control element -**

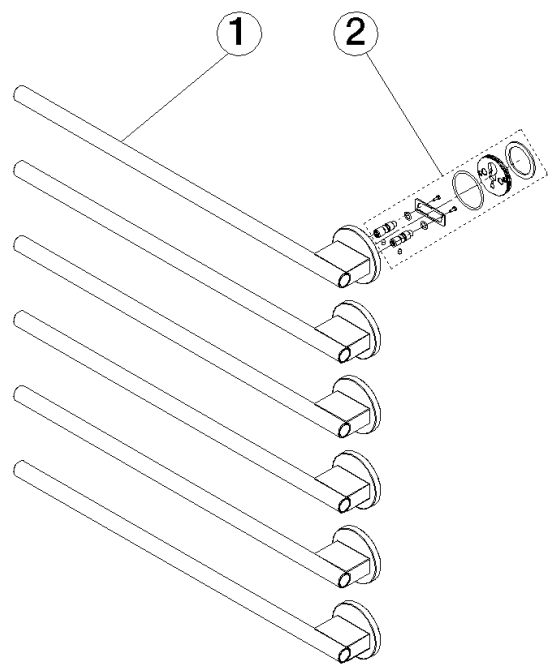
35 313 970 90

  - min. recess depth 70 mm
  - max. recess depth 105 mm

83 306 979 Product version from 4/1/2025

mm [inches]





Spare parts list

No.	Item Number	Name	Quantity used	Delivery time
2	90 30 30 252 00 90	fixing set	1.00	2
1	90 17 97 102 00-33	holder	1.00	50