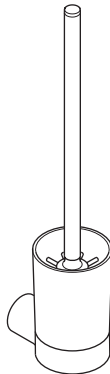


Dornbracht Montageanleitung

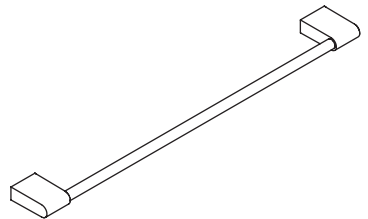
Installation instructions



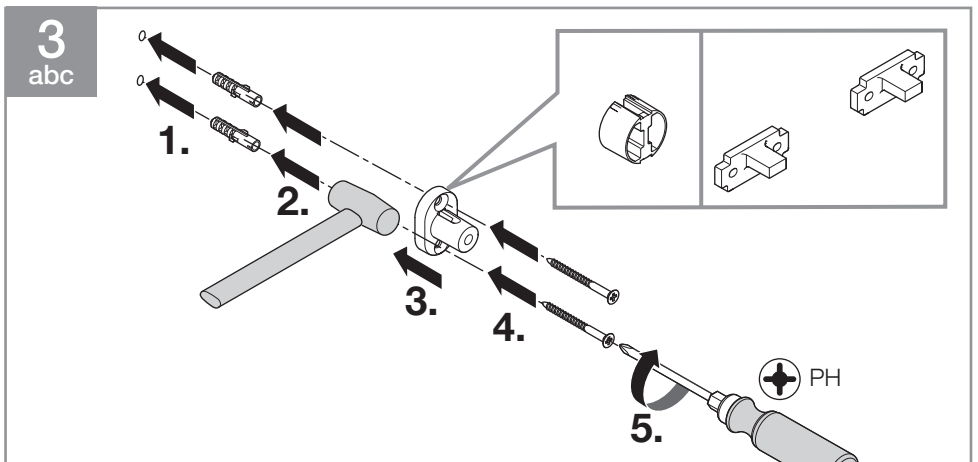
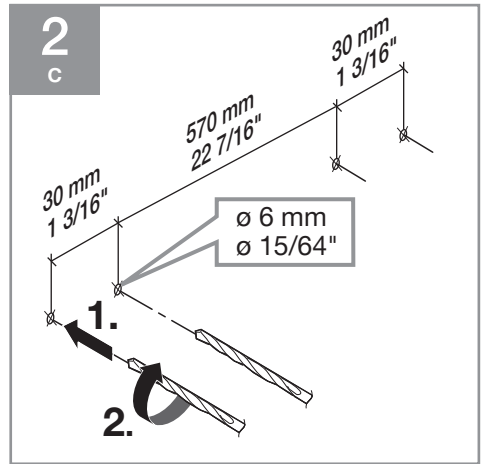
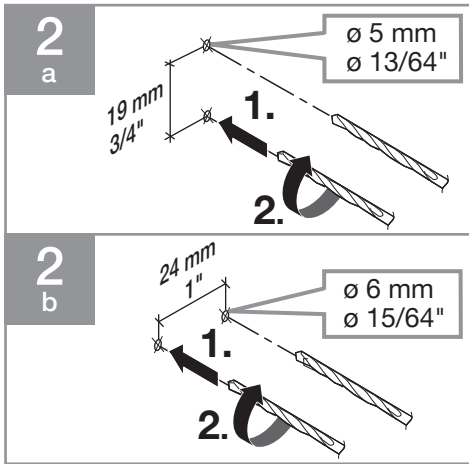
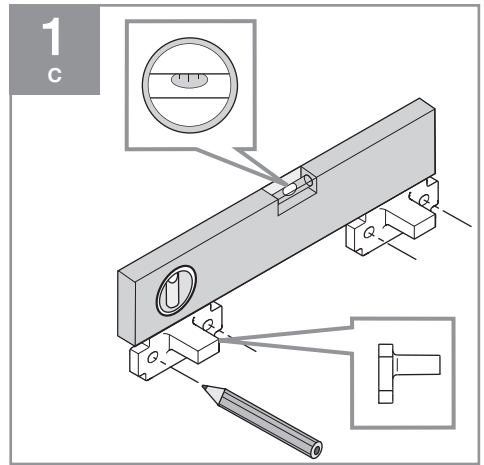
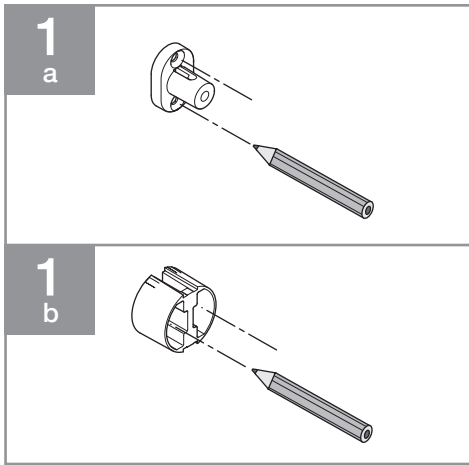
a 83 251 832-FF



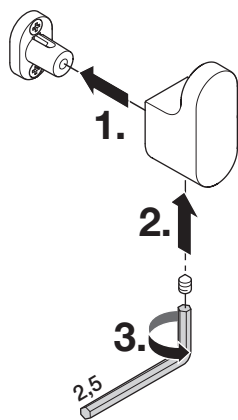
b 83 900 832-FF



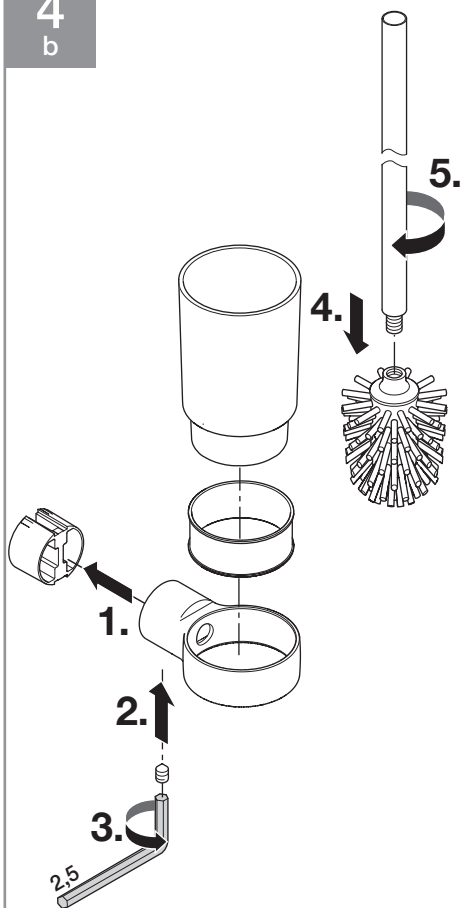
c 83 060 832-FF



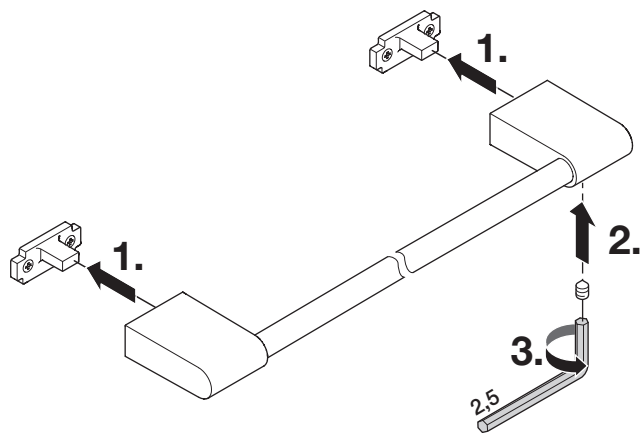
4
a



4
b



4
c



DE ACHTUNG!

Das beigefügte, universelle Befestigungsmaterial ist nicht für alle Untergründe geeignet. Bitte verwenden Sie nur - für den jeweiligen Untergrund - geeignete Schrauben und Dübel. Bitte prüfen Sie vor Verwendung sorgfältig, ob das beigefügte Befestigungsmaterial für den vorgesehenen Untergrund tauglich ist.

GB ATTENTION!

The universal fastening accessories supplied with the product are not suitable for all substrates. Please only use screws and plugs that are suitable for the substrate concerned. Therefore, before using the accessories, please carry out a thorough check to ensure that the fastening accessories supplied with the product are suitable for the intended substrate.

Dornbracht AG & Co. KG
Köbbingser Mühle 6, D-58640 Iserlohn
Tel. +49 2371 8899-900
mail@dornbracht.de
www.dornbracht.com



01 03 55 002 00 / 09.2022