


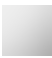




ELIO Single-lever mixer with profi spray set - Brushed Chrome

ELIO

ST 110 106 3790



- 234mm projection
- pivotable spout 360°
- spout, end-piece with 20° rotation
- air-enriched flow and spray flow
- height of mixer 337 mm
- test
- height up to aerator 297 mm
- single-lever mixer hole diameter 35 mm
- profi spray hole diameter 30mm
- sprayface with anti-scaling system
- automatic spout/shower diverter
- max. flow 8 l/min at 3 bar flow pressure
- lead-free
- This product can help a building meet the requirements of Green Building Rating Systems, e.g. LEED®, BREEAM®, DGNB

	Brushed Chrome	ST 110 106 3790-93
	Chrome	ST 110 106 3790-00
	Brushed Platinum	ST 110 106 3790-06
	Platinum	ST 110 106 3790-08
	Dark Chrome	ST 110 106 3790-19
	Brushed Dark Platinum	ST 110 106 3790-99

Individual components of this set

You need the following components for this set



1x 27 789 970-93



1x 33 826 790-93

ELIO Single-lever mixer with profi spray set - Brushed Chrome

ELIO

ST 110 106 3790



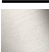





Fits: ELIO, TARA, TARA ULTRA

- spray flow
- automatic diverter for spout/Profi spray set
- height of mixer 665 mm
- individual rosette diameter 55mm
- profi spray hole diameter 30mm
- sprayface with anti-scaling system
- lead-free

Can only be combined with 33826790, 32800790, 33826888, 32815888, 20815892, 33826875.

Intrinsic protection against back flow.

	Brushed Chrome	27 789 970-9
	Chrome	27 789 970-0
	Brushed Platinum	27 789 970-0
	Platinum	27 789 970-0
	Dark Chrome	27 789 970-1
	Brushed Dark Platinum	27 789 970-9



ELIO Single-lever mixer with profi spray set - Brushed Chrome

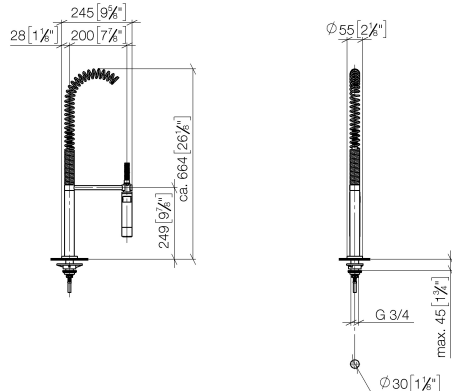
ELIO

ST 110 106 3790

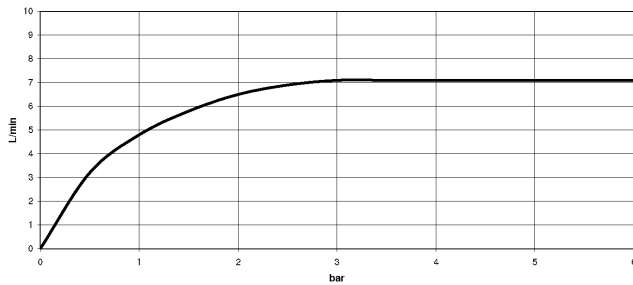
3
—
0
—
6
—
8
—
9
—
9
—

ST 110 106 3790

mm [inches]
M 1:10



Flow rate chart



Certificates

Belgaqua_22_277_2 LGA_18



ELIO Single-lever mixer with profi spray set - Brushed Chrome

ELIO

ST 110 106 3790

Codes & Standards

DIN 4109

EN 1717

ISO 3822

Ü-Zeichen



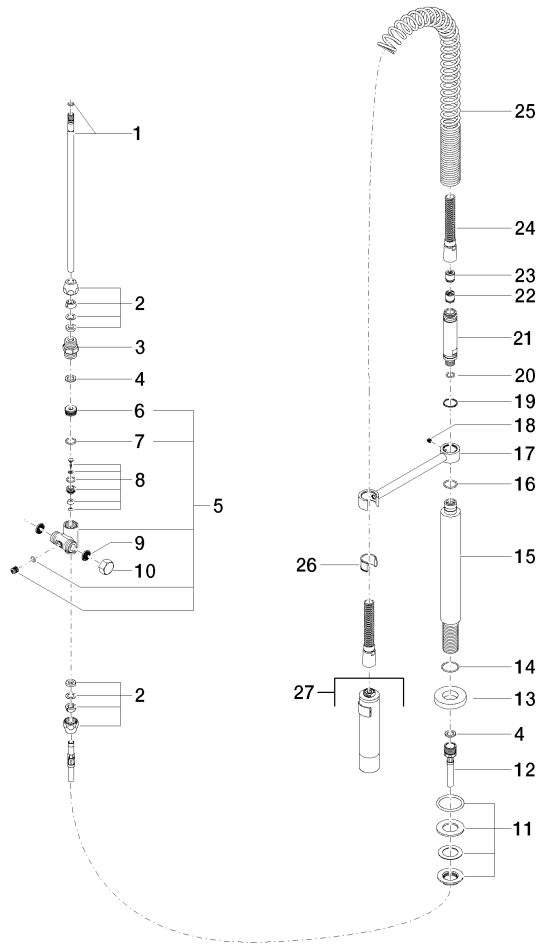
ELIO Single-lever mixer with profi spray set - Brushed Chrome

ELIO

ST 110 106 3790

Product version from 10/27/2020

Parts for other
finishes can be found
here: [Chrome](#)



Spare parts list

Product version from 10/27/2020



- 234mm projection
- pivotable spout 360°
- spout, end-piece with 20° rotation
- air-enriched flow
- height of mixer 337 mm
- height up to aerator 297 mm
- single-lever mixer hole diameter 35mm
- max. flow 8 l/min at 3 bar flow pressure
- lead-free
- This product can help a building meet the requirements of Green Building Rating Systems, e.g. LEED®, BREEAM®, DGNB

Single-lever mixer for combining with rinsing/Profi spray only

	Brushed Chrome	33 826 790-9
	Chrome	33 826 790-0
	Brushed Platinum	33 826 790-0
	Platinum	33 826 790-0
	Dark Chrome	33 826 790-1
	Brushed Durabronze (23kt Gold)	33 826 790-2
	Brushed Champagne (22kt Gold)	33 826 790-4
	Champagne (22kt Gold)	33 826 790-4
	Brushed Dark Platinum	33 826 790-9

ST 110 106 3790

3
—
10
—
16
—
18
—
9
—
8
—
6
—
7
—
19
—

Required miscellaneous



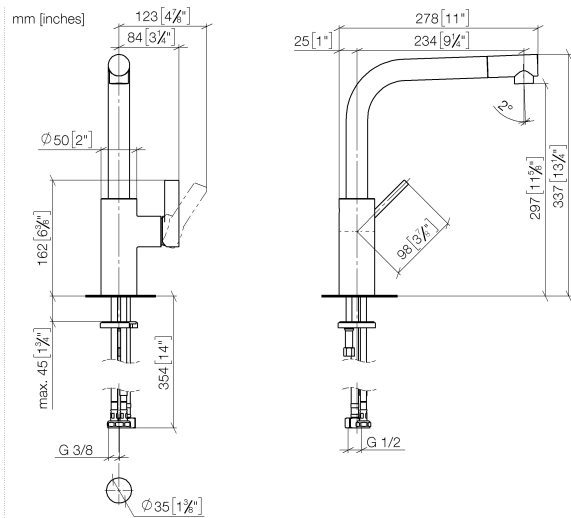
Profi spray set - Brushed Chrome 27 789 970-93

Required miscellaneous

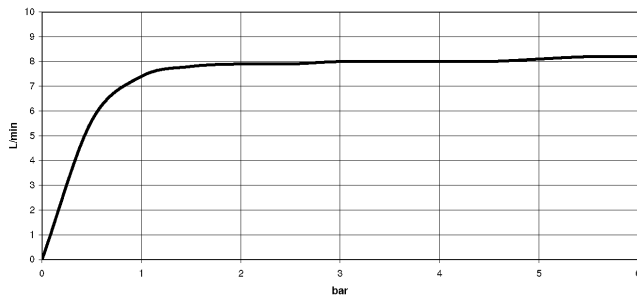


Rinsing spray set - Brushed Chrome 27 721 970-93

ST 110 106 3790



Flow rate chart



Certificates

GDV_0400



ELIO Single-lever mixer with profi spray set - Brushed Chrome

ELIO

ST 110 106 3790

Codes & Standards

Executive Order
no. 1007



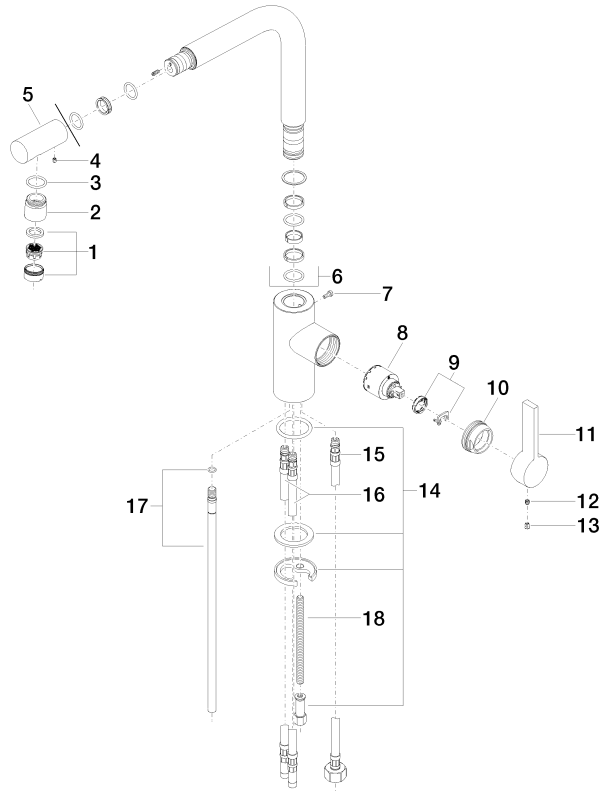
ELIO Single-lever mixer with profi spray set - Brushed Chrome

ELIO

ST 110 106 3790

Product version from 6/1/2022

Parts for other
finishes can be found
here: Chrome



Spare parts list

Product version from 6/1/2022