

TARA Three-hole mixer with profi spray set - Brushed Platinum

TARA

ST 110 201 5892



- 235mm projection
- pivotable spout 360°
- air-enriched flow and spray flow
- height of mixer 370 mm
- test
- height up to aerator 212 mm
- hole diameter spout 35 mm
- hole diameter valve 32 mm
- profi spray hole diameter 30mm
- automatic spout/shower diverter
- sprayface with anti-scaling system
- max. flow 7 l/min at 3 bar flow pressure
- lead-free
- This product can help a building meet the requirements of Green Building Rating Systems, e.g. LEED®, BREEAM®, DGNB

	Brushed Platinum	ST 110 201 5892-06
	Chrome	ST 110 201 5892-00
	Platinum	ST 110 201 5892-08
	Dark Chrome	ST 110 201 5892-19
	Brushed Chrome	ST 110 201 5892-93
	Brushed Dark Platinum	ST 110 201 5892-99

Individual components of this set

You need the following components for this set



1x 20 815 892-06



1x 27 789 970-06

# TARA Three-hole mixer with profi spray set - Brushed Platinum

TARA

ST 110 201 5892



- 235mm projection
- pivotable spout 360°
- air-enriched flow
- height of mixer 370 mm
- height up to aerator 212 mm
- hole diameter spout 35 mm
- hole diameter valve 32 mm
- max. flow 7 l/min at 3 bar flow pressure
- lead-free
- This product can help a building meet the requirements of Green Building Rating Systems, e.g. LEED®, BREEAM®, DGNB
- WRAS 2107052

	Brushed Platinum	20 815 892-0
	Chrome	20 815 892-0
	Platinum	20 815 892-0
	Durabrand (23kt Gold)	20 815 892-0
	Dark Chrome	20 815 892-1
	Brushed Durabrand (23kt Gold)	20 815 892-2
	Matte Black	20 815 892-3
	Brushed Champagne (22kt Gold)	20 815 892-4
	Champagne (22kt Gold)	20 815 892-4
	Brushed Chrome	20 815 892-9
	Brushed Dark Platinum	20 815 892-9

ST 110 201 5892

6  
—  
0  
—  
8  
—  
9  
—  
9  
—  
8  
—  
3  
—  
6  
—  
7  
—  
3  
—  
9  
—

Recommended miscellaneous

**Strainer waste with control handle** 10 710 970-06  
**- Brushed Platinum**

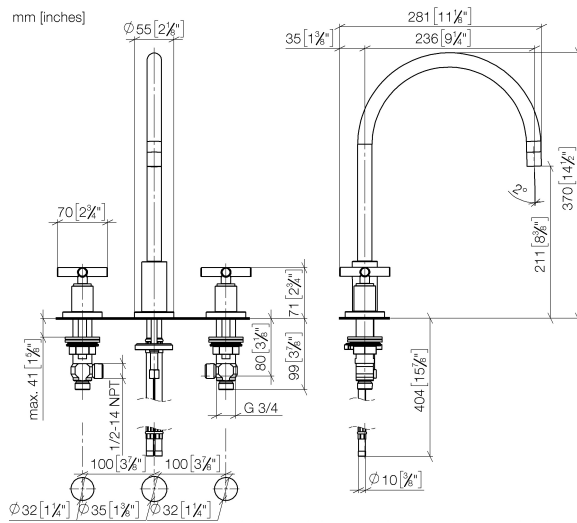


Recommended miscellaneous

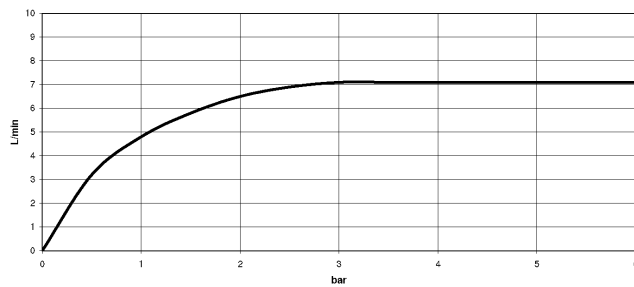
**Dispenser with rosette - Brushed** 82 444 970-06  
**Platinum**



ST 110 201 5892



### Flow rate chart



## Certificates

WRAS\_2107

LGA\_19

ETA\_18

GDV\_0400

Codes & Standards

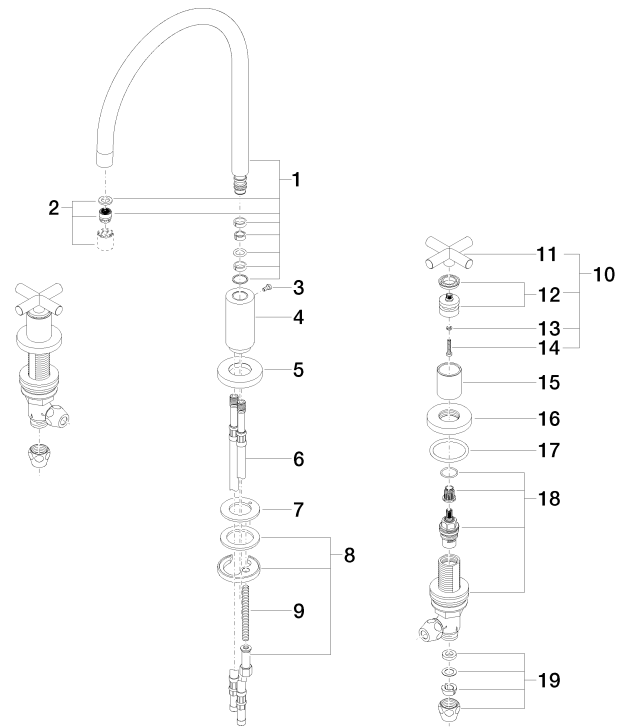
DIN 4109	EN 200	Executive Order no. 1007	ISO 3822
Scottish Water Byelaws	UK Water Supply Regulations	Ü-Zeichen	VA-Zeichen



ST 110 201 5892

**Product version from 6/30/2009**

Parts for other finishes can be found here: [Chrome](#)



ST 110 201 5892

Spare parts list

Product version from 6/30/2009


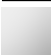






Fits: ELIO, TARA, TARA ULTRA

- spray flow
- automatic diverter for spout/Profi spray set
- height of mixer 665 mm
- individual rosette diameter 55mm
- profi spray hole diameter 30mm
- sprayface with anti-scaling system
- lead-free

Can only be combined with 33826790, 32800790, 33826888, 32815888, 20815892, 33826875.

Intrinsic protection against back flow.

	Brushed Platinum	27 789 970-0
	Chrome	27 789 970-0
	Platinum	27 789 970-0
	Dark Chrome	27 789 970-1
	Brushed Chrome	27 789 970-9
	Brushed Dark Platinum	27 789 970-9





TARA Three-hole mixer with profi spray set - Brushed Platinum

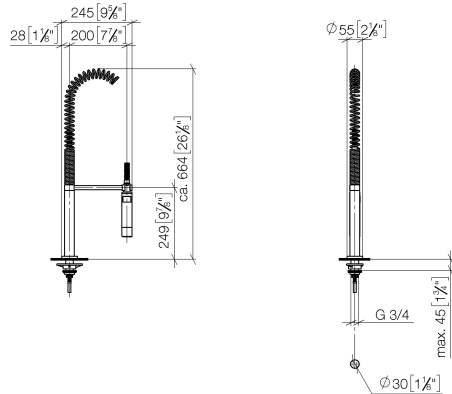
TARA

ST 110 201 5892

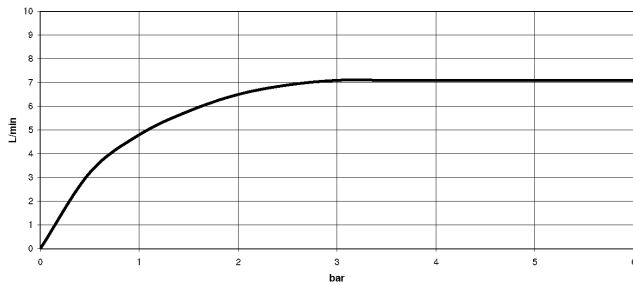
6  
—  
0  
—  
8  
—  
9  
—  
3  
—  
9  
—

ST 110 201 5892

mm [inches]  
M 1:10



### Flow rate chart



### Certificates

Belgaqua\_22\_277\_2 LGA\_28

LGA\_18

Codes & Standards

DIN 4109

EN 1717

ISO 3822

Ü-Zeichen



ST 110 201 5892

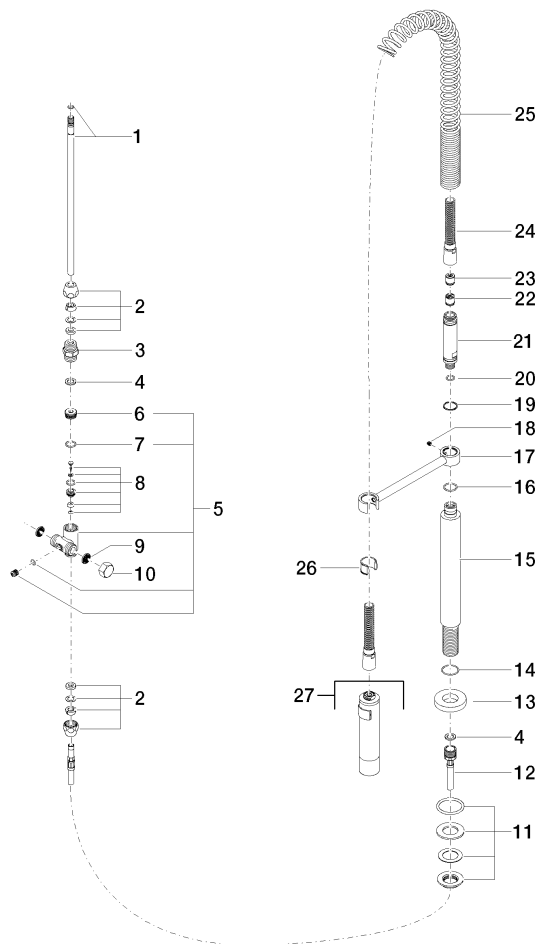
Product version up to 7/10/2018

Product version from 7/10/2018 to 9/18/2018

Product version from 9/18/2018 to 10/27/2020

**Product version from 10/27/2020**

Parts for other  
finishes can be found  
here: [Chrome](#)





TARA Three-hole mixer with profi spray set - Brushed Platinum

TARA

ST 110 201 5892

Spare parts list

Product version up to 7/10/2018

Product version from 7/10/2018 to 9/18/2018

Product version from 9/18/2018 to 10/27/2020

**Product version from 10/27/2020**

No.	Item Number	Name	Quantity used	Delivery time
	04 24 02 046 01-07	pipe	30	10