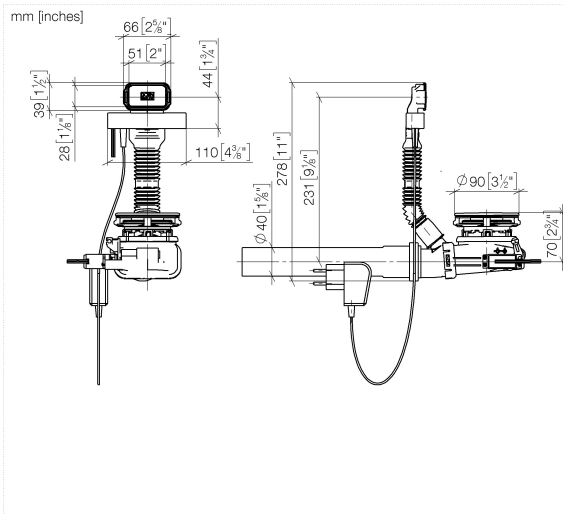


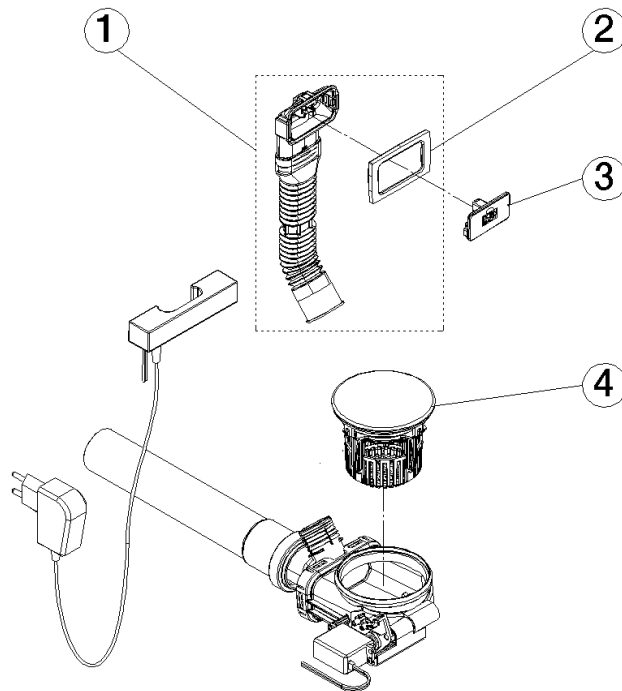


- 3 1/2" hidden drain valve with underlying strainer
- Electric drain valve with integrated button in the overflow
- Hidden, swivel overflow

Only suitable for combining with Brushed Stainless Steel kitchen sinks.

10 410 004 Product version from 1/1/2025





Spare parts list

No.	Item Number	Name	Quantity used	Delivery time
4	90 11 01 135 00-86	strainer	1.00	-
Spare part can no longer be ordered, please order the replacement item				
3	90 28 30 085 00-86	cap	1.00	30
2	90 11 01 125 00 90	seal	1.00	-
Spare part can no longer be ordered, please order the replacement item				
1	90 11 01 128 00 90	pop-up waste	1.00	-
Spare part can no longer be ordered, please order the replacement item				