




MEM Bath cascade spout without diverter for deck mounting - Brushed  
Platinum
MEM

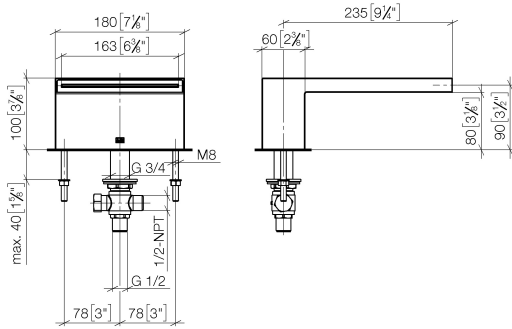
13 630 740	Product version from 9/1/2025		
	<ul style="list-style-type: none"> <li>• 235mm projection</li> <li>• cascade</li> <li>• height of mixer 100 mm</li> <li>• height up to aerator 80 mm</li> <li>• hole diameter 32 mm</li> <li>• 1/2" connection</li> <li>• max. flow 26.5 l/min at 3 bar flow pressure</li> <li>• WRAS</li> </ul>		<div> Brushed Platinum 13 630 740-06 </div>
			<div> Chrome 13 630 740-00 </div>
			<div> Platinum 13 630 740-08 </div>
			<div> Dark Chrome 13 630 740-19 </div>
			<div> Brushed Durabrass (23kt Gold) 13 630 740-28 </div>
			<div> Brushed Dark Brass 13 630 740-39 </div>
			<div> Brushed Champagne (22kt Gold) 13 630 740-46 </div>
			<div> Champagne (22kt Gold) 13 630 740-47 </div>
			<div> Brushed Dark Platinum 13 630 740-99 </div>



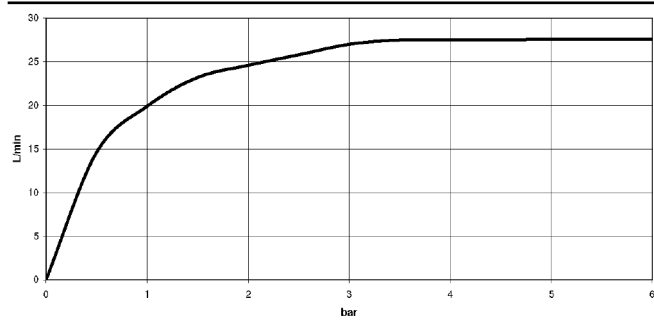
MEM Bath cascade spout without diverter for deck mounting - Brushed Platinum

MEM

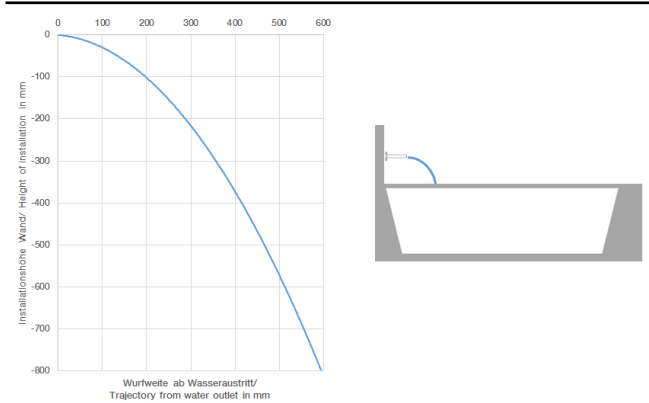
13 630 740 Product version from 9/1/2025  
mm [inches]



Flow rate chart



Trajectory diagram



Codes & Standards

ASME A112.18.1	cUPC	DIN 4109	ISO 3822
Scottish Water Byelaws	UK Water Supply Regulations	Ü-Zeichen	



MEM Bath cascade spout without diverter for deck mounting - Brushed Platinum

MEM

13 630 740    Product version from 9/1/2025

Certificates and sustainability

IAPMO_4976	LGA_19	WRAS_240502
------------	--------	-------------

## MEM Bath cascade spout without diverter for deck mounting - Brushed Platinum

MEM

13 630 740 Product version from 9/1/2025

Parts for other  
finishes can be found  
here: [Chrome](#)



### Spare parts list

No.	Item Number	Name	Quantity used	Delivery time
8	09 23 01 057 90	flow reducer	1.00	2
1	90 29 03 059 00 90	insert	1.00	2
6	09 24 04 246 20 90	nipple	1.00	2
4	09 14 10 008 90	seal	2.00	2
5	09 31 11 011 90	pin	2.00	2
7	09 30 11 045 90	disc	2.00	2
3	09 31 11 044 90	pin	1.00	2
11	90 30 01 033 00 90	base	1.00	2
14	90 23 10 012 00 90	gasket kit	1.00	2
12	04 23 10 004 04 90	fixing set	1.00	2
15	04 21 02 006 00 92	cap	2.00	2
10	09 14 10 140 90	seal	1.00	2
2	09 11 74 040-06	spout	1.00	10
9	09 23 10 023 90	nut	2.00	2
13	90 17 11 020 10 90	distributor	1.00	2