



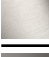



CL.1 Wall-mounted basin spout without pop-up waste - Brushed Dark Platinum

CL.1

13 800 705



- 200mm projection
- fixed spout
- rectangular spray pattern with 40 individual jets
- hole diameter 37 mm
- lead-free
- 1/2" connection
- plug-link mounting
- max. flow 4.5 l/min
- This product can help a building meet the requirements of Green Building Rating Systems, e.g. LEED®, BREEAM®, DGNB
- WRAS 1512013

	Brushed Dark Platinum	13 800 705-99
	Chrome	13 800 705-00
	Brushed Platinum	13 800 705-06
	Dark Chrome	13 800 705-19
	Brushed Champagne (22kt Gold)	13 800 705-46
	Champagne (22kt Gold)	13 800 705-47

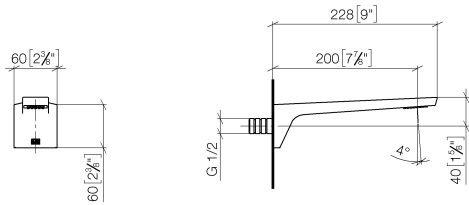
Recommended miscellaneous



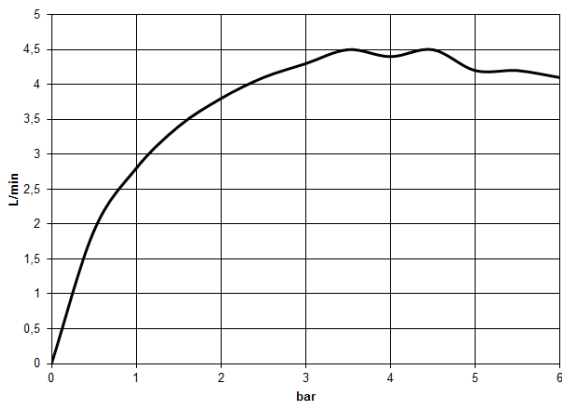
- Concealed wall elbow -** 35 085 970 90
- max. recess depth 163 mm
 - min. recess depth 90 mm

13 800 705


mm [inches]



Flow rate chart



Codes & Standards

ASME A112.18.1	cUPC	DIN 4109	EPA WaterSense
ISO 3822	NSF372	NSF61	Scottish Water Byelaws
UK Water Supply Regulations	Ü-Zeichen	WaterSense	



CL.1 Wall-mounted basin spout without pop-up waste - Brushed Dark Platinum

CL.1

13 800 705

Certificates

IAPMO_4976

IAPMO_N-4

IAPMO_8834

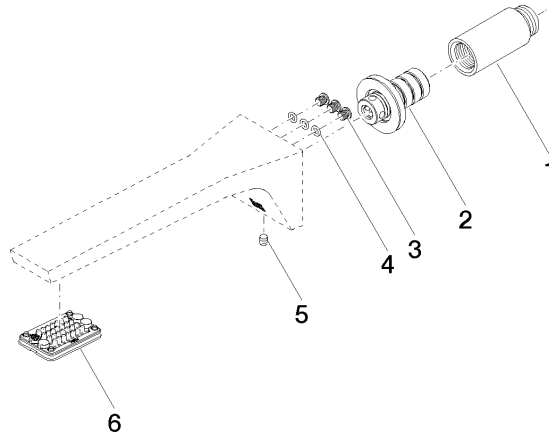
LGA_28

IAPMO_6

WRAS_1512

13 800 705

Product version from 3/9/2015





CL.1 Wall-mounted basin spout without pop-up waste - Brushed Dark Platinum

CL.1

13 800 705

Spare parts list

Product version from 3/9/2015

No.	Item Number	Name	Quantity used	Delivery time
	09 24 03 081 10 90	extension	10	2