







MADISON Bath spout for wall mounting - Chrome

MADISON

13 801 380

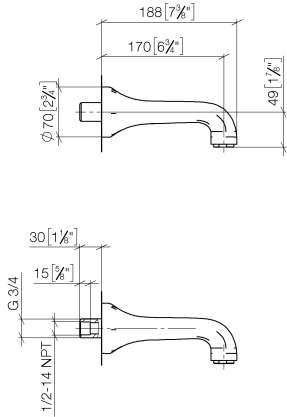


- 170mm projection
- circular normal flow
- hole diameter 37 mm
- 3/4" connection
- max. flow 22 l/min at 3 bar flow pressure
- WRAS 1404060

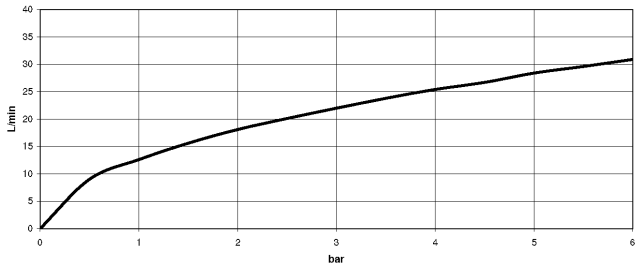
| | | |
|------------------------------------------------------------------------------------|------------------------------|---------------|
|  | Chrome | 13 801 380-00 |
|  | Brushed Platinum | 13 801 380-06 |
|  | Platinum | 13 801 380-08 |
|  | Durabass (23kt Gold) | 13 801 380-09 |
|  | Brushed Durabass (23kt Gold) | 13 801 380-28 |
|  | Brushed Dark Platinum | 13 801 380-99 |

13 801 380

mm [inches]



Flow rate chart



Codes & Standards

Scottish Water
Byelaws

UK Water Supply
Regulations



MADISON Bath spout for wall mounting - Chrome

MADISON

13 801 380

Certificates

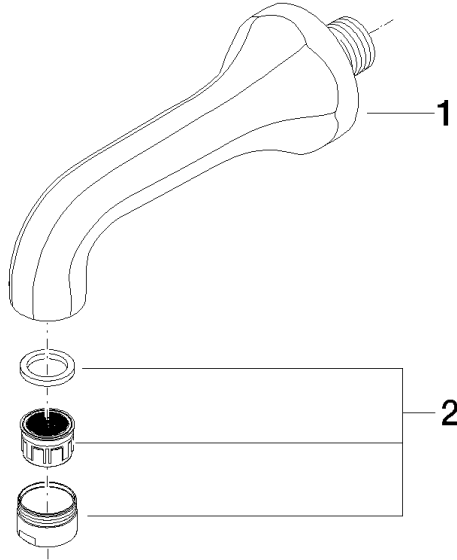
WRAS_1404

13 801 380

Product version up to 7/31/2009

Product version from 7/31/2009

Parts for other finishes can be found here: Brushed Platinum





MADISON Bath spout for wall mounting - Chrome

MADISON

13 801 380

Spare parts list

Product version up to 7/31/2009

Product version from 7/31/2009

| No. | Item Number | Name | Quantity used | Delivery time |
|-----|-----------------|-------|---------------|---------------|
| | 09 11 36 090-00 | spout | 2 | 60 |