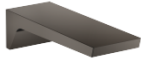








CL.1 Bath spout for wall mounting - Brushed Dark Platinum

CL.1

13 801 705 Product version from 3/9/2015



- 205mm projection
- rectangular spray pattern with 55 individual jets
- hole diameter 37 mm
- 1/2" connection
- plug-link mounting
- max. flow 24.6 l/min at 3 bar flow pressure
- WRAS

	Brushed Dark Platinum	13 801 705-99
	Chrome	13 801 705-00
	Brushed Platinum	13 801 705-06
	Dark Chrome	13 801 705-19
	Brushed Champagne (22kt Gold)	13 801 705-46
	Champagne (22kt Gold)	13 801 705-47

Recommended miscellaneous



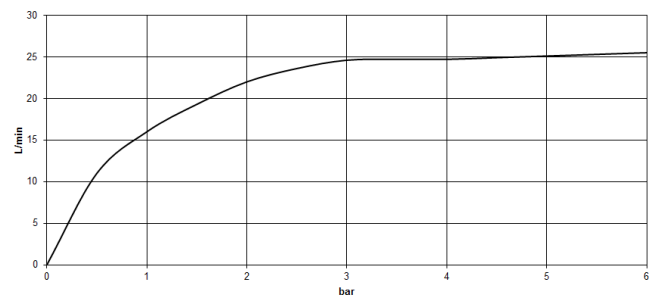
- Concealed wall elbow -** 35 085 970 90
- max. recess depth 163 mm
 - min. recess depth 90 mm

13 801 705 Product version from 3/9/2015

mm [inches]



Flow rate chart



Codes & Standards

ASME A112.18.1	cUPC	DIN 4109	ISO 3822
Scottish Water Byelaws	UK Water Supply Regulations	Ü-Zeichen	



CL.1 Bath spout for wall mounting - Brushed Dark Platinum

CL.1

13 801 705 Product version from 3/9/2015

Certificates and sustainability

WRAS_1512

IAPMO_4976

LGA_28



Spare parts list

No.	Item Number	Name	Quantity used	Delivery time
4	09 31 20 027 10-00	plug	2.00	10
7	90 11 02 299 00 90	aerator	1.00	2
3	09 14 10 119 90	seal	1.00	2
2	09 24 03 180 90	nipple	1.00	2
5	09 14 10 132 90	seal	2.00	2
1	09 24 03 081 10 90	extension	1.00	2
6	90 31 11 004 00 90	pin	1.00	2