
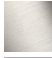







LISSÉ Bath spout for wall mounting - Chrome

13 801 845 Product version from 3/9/2016



- 210mm projection
- circular normal flow
- hole diameter 37 mm
- 1/2" connection
- plug-link mounting
- max. flow 21.5 l/min at 3 bar flow pressure
- WRAS

	Chrome	13 801 845-00
	Brushed Platinum	13 801 845-06
	Dark Chrome	13 801 845-19
	Brushed Light Gold	13 801 845-27
	Matte Black	13 801 845-33
	Brushed Chrome	13 801 845-93
	Brushed Dark Platinum	13 801 845-99

Recommended miscellaneous



Concealed wall elbow -

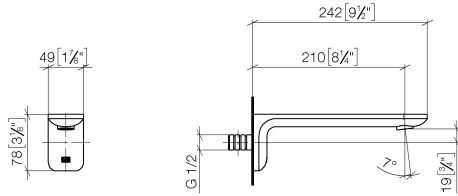
35 085 970 90

- max. recess depth mm
- min. recess depth mm

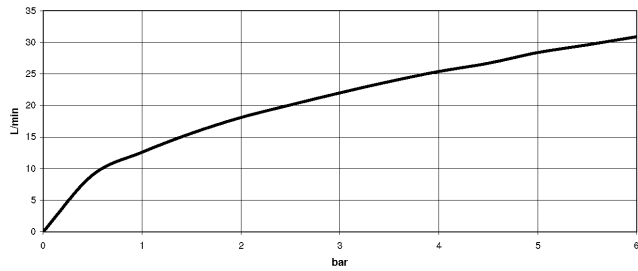
LISSÉ Bath spout for wall mounting - Chrome

13 801 845 Product version from 3/9/2016

mm [inches]



Flow rate chart



Codes & Standards

ASME A112.18.1

cUPC

DIN 4109

ISO 3822

Scottish Water
Byelaws

UK Water Supply
Regulations

Ü-Zeichen



LISSÉ Bath spout for wall mounting - Chrome

13 801 845 Product version from 3/9/2016

Certificates

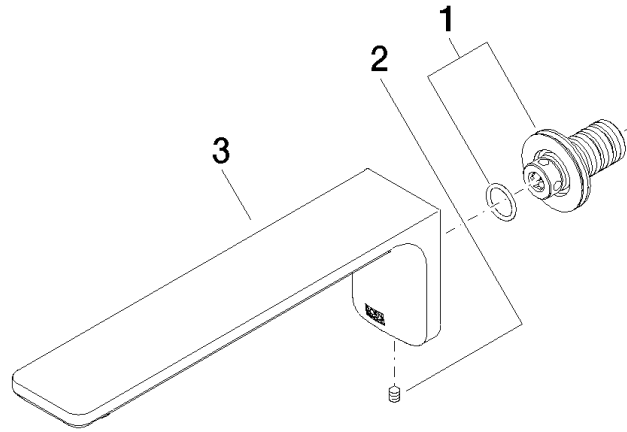
IAPMO_4976

LGA_29

WRAS_2207

LISSÉ Bath spout for wall mounting - Chrome

13 801 845 Product version from 3/9/2016



Spare parts list

No.	Item Number	Name	Quantity used	Delivery time
1	90 24 03 108 00 90	nipple set	1	2
2	90 31 11 004 00 90	pin	1	2
3	90 11 84 014 02-00	spout	1	10