

MADISON Deck valve clockwise closing cold or hot - Chrome

20 000 360

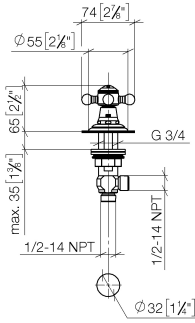


- hole diameter 32 mm
- rosette Ø 55 mm
- supplied with porcelain inserts for both HOT and COLD
- WRAS

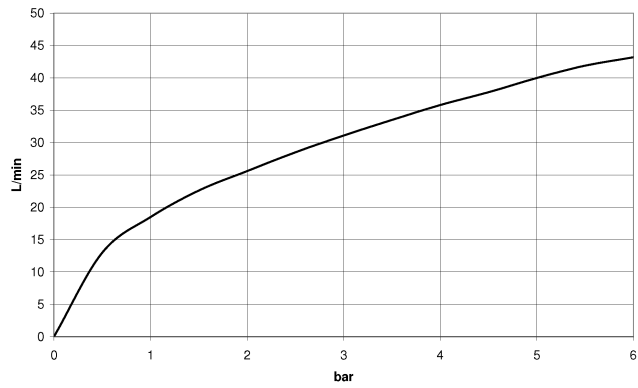
MADISON Deck valve clockwise closing cold or hot - Chrome

20 000 360

mm [inches]



Flow rate chart



Codes & Standards

Scottish Water
Byelaws

UK Water Supply
Regulations



MADISON Deck valve clockwise closing cold or hot - Chrome

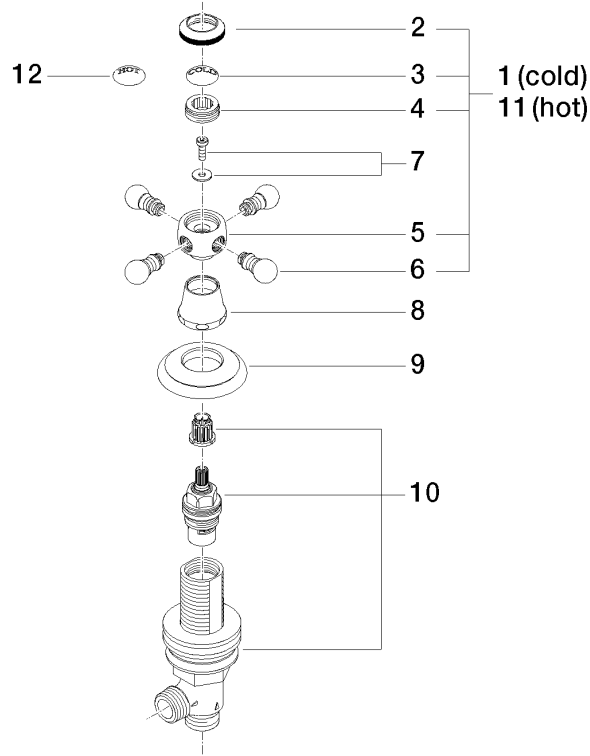
20 000 360

Certificates

WRAS_1810

MADISON Deck valve clockwise closing cold or hot - Chrome

20 000 360



Spare parts list

| No. | Item Number | Name | Quantity used | Delivery time |
|-----|--------------------|-----------------|---------------|---------------|
| 1 | 04 20 36 002 06-00 | handle (cold) | 1 | 10 |
| 2 | 09 20 36 005-00 | handle | 1 | 10 |
| 3 | 09 26 01 010 90 | accessories | 1 | 2 |
| 4 | 09 20 83 006 90 | handle | 1 | 2 |
| 5 | 09 20 36 002-00 | handle | 1 | 10 |
| 6 | 09 20 36 004-00 | handle | 4 | 10 |
| 7 | 04 30 30 029 00 90 | fixing set | 1 | 2 |
| 8 | 09 21 02 046-00 | cover | 1 | 10 |
| 9 | 09 27 35 001-00 | rosette | 1 | 10 |
| 10 | 90 17 11 040 31 90 | side panel | 1 | 2 |
| 11 | 04 20 36 002 07-00 | handle (hot) | 1 | 10 |
| 12 | 09 26 01 011 90 | accessories | 1 | 2 |