

TARA Deck valve clockwise closing - Brushed Platinum

TARA

20 000 882

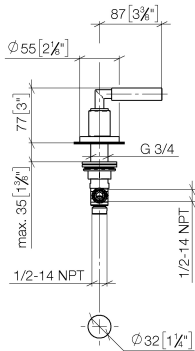


- hole diameter 32 mm
- rosette Ø 55 mm
- WRAS

	Brushed Platinum	20 000 882-06
	Dark Chrome	20 000 882-19
	Brushed Dark Brass	20 000 882-39
	Brushed Bronze	20 000 882-42
	Brushed Champagne (22kt Gold)	20 000 882-46
	Champagne (22kt Gold)	20 000 882-47

20 000 882

mm [inches]



Flow rate chart



Codes & Standards

ASME A112.18.1

cUPC

Scottish Water  
Byelaws

UK Water Supply  
Regulations



## TARA Deck valve clockwise closing - Brushed Platinum

---

TARA

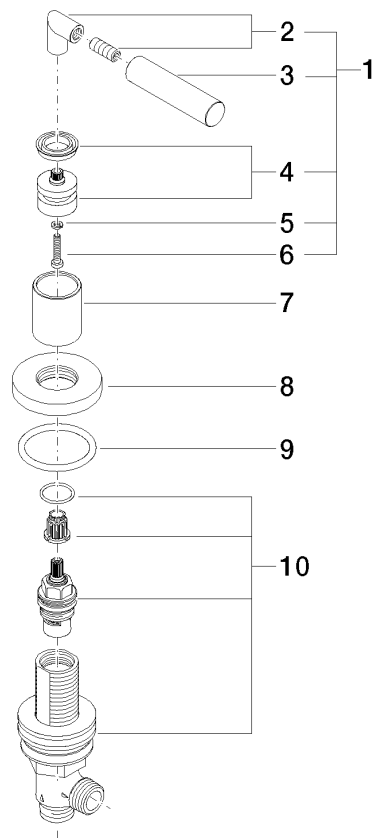
20 000 882

Certificates and sustainability

---

WRAS\_2112

IAPMO\_4976



## Spare parts list

No.	Item Number	Name	Quantity used	Delivery time
	4 90 12 12 007 00-06	base	1.00	10
	2 04 18 20 022 00-06	angle	1.00	10
	8 09 27 89 105-06	rosette	1.00	10
	7 09 21 02 140-06	sleeve	1.00	10
	3 09 20 88 052-06	handle	1.00	10
	1 04 20 88 052 00-06	handle	1.00	10
	10 90 17 11 040 31 90	side panel	1.00	2
	6 90 30 30 075 00 90	screw	1.00	2
	5 90 30 11 029 00 90	disc	1.00	2
	9 90 14 10 043 00 90	seal	1.00	2