

MADISON Three-hole basin mixer with pop-up waste - Chrome








MADISON

20 700 370 Product version from 7/31/2009



- 135mm projection
- fixed spout
- circular, air-enriched flow
- height of mixer 72 mm
- height up to aerator 40 mm
- hole diameter valve 32 mm
- hole diameter spout 35 mm
- without rosette
- 2x 1/2" x 1/2" high pressure hose
- max. flow 7 l/min
- lead-free
- This product can help a building meet the requirements of Green Building Rating Systems, e.g. LEED®, BREEAM®, DGNB
- WRAS

Only suitable for basins with an overflow.

| | | |
|-----------------------------------------------------------------------------------|-------------------------------|---------------|
|  | Chrome | 20 700 370-00 |
|  | Brushed Platinum | 20 700 370-06 |
|  | Platinum | 20 700 370-08 |
|  | Durabrand (23kt Gold) | 20 700 370-09 |
|  | Brushed Durabrand (23kt Gold) | 20 700 370-28 |
|  | Brushed Dark Brass | 20 700 370-39 |
|  | Brushed Dark Platinum | 20 700 370-99 |



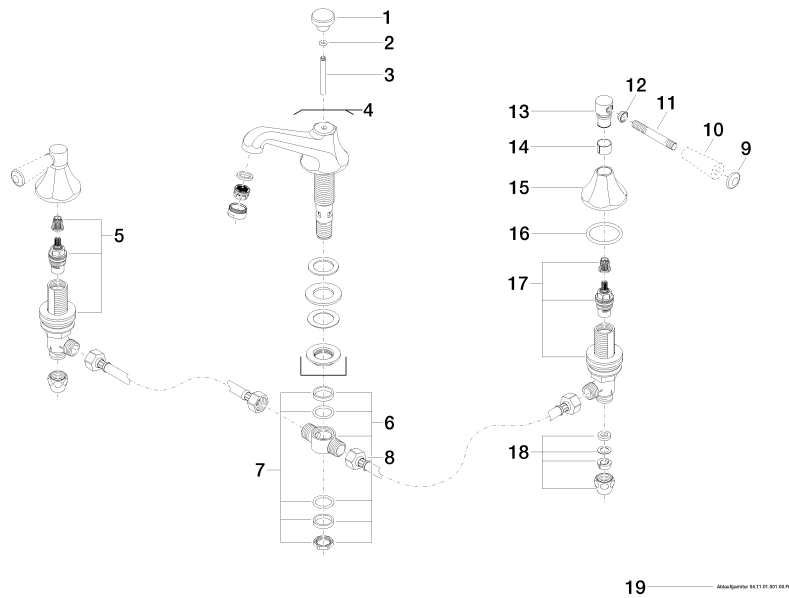
MADISON Three-hole basin mixer with pop-up waste - Chrome

MADISON

20 700 370 Product version from 7/31/2009

Certificates and sustainability

| | | |
|----------|-------|-------------|
| GDV_0400 | LGA_8 | WRAS_240602 |
|----------|-------|-------------|



Spare parts list

| No. | Item Number | Name | Quantity used | Delivery time |
|-----|-----------------------|-------------------------------|---------------|---------------|
| | 13 09 20 82 000-00 | handle | 2.00 | 10 |
| | 1 09 20 36 030-00 | handle | 1.00 | 10 |
| | 3 09 31 09 004-00 | pull-rod | 1.00 | 10 |
| | 4 13 700 380-00 | spout | 1.00 | 10 |
| | 5 90 17 11 040 51 90 | side panel | 1.00 | 2 |
| | 8 04 30 04 096 00 90 | hose | 2.00 | 2 |
| | 10 11 170 370-00 | MADISON Lever insert - Chrome | 2.00 | 10 |
| | 15 09 27 37 014-00 | rosette | 2.00 | 10 |
| | 7 90 23 10 012 00 90 | gasket kit | 1.00 | 2 |
| | 11 09 28 22 013 90 | pipe | 2.00 | 2 |
| | 9 09 30 30 062-00 | screw | 2.00 | 10 |
| | 12 09 20 37 001-00 | handle | 2.00 | 10 |
| | 17 90 17 11 040 50 90 | side panel | 1.00 | 2 |
| | 18 90 23 30 040 00-00 | threaded connector | 2.00 | 10 |
| | 19 90 11 01 001 00-00 | pop-up waste | 1.00 | 10 |
| | 14 90 18 40 041 00 90 | sleeve | 2.00 | 2 |
| | 2 90 14 10 062 00 90 | seal | 1.00 | 2 |
| | 6 90 17 11 020 10 90 | distributor | 1.00 | 2 |
| | 16 90 14 10 043 00 90 | seal | 2.00 | 2 |