

## LULU Three-hole basin mixer with pop-up waste - Chrome

LULU

20 713 710 Product version from 8/31/2015 to 7/22/2021



- 155mm projection
- fixed spout
- circular, air-enriched flow
- height of mixer 114 mm
- height up to aerator 90 mm
- hole diameter valve 32 mm
- hole diameter spout 35 mm
- rosette 47 x 55 mm
- 2x screw-in M 8 x 1 pressure hose, leak-tested
- max. flow 7 l/min
- lead-free
- WRAS
- This product can help a building meet the requirements of Green Building Rating Systems, e.g. LEED®, BREEAM®, DGNB

Only suitable for basins with an overflow.



Chrome

20 713 710-00



Brushed Platinum

20 713 710-06

### Recommended miscellaneous



#### High pressure hoses -

12 506 970 90

- 2x 3/8" x 1/2" x 500mm high pressure hose





## LULU Three-hole basin mixer with pop-up waste - Chrome

---

LULU

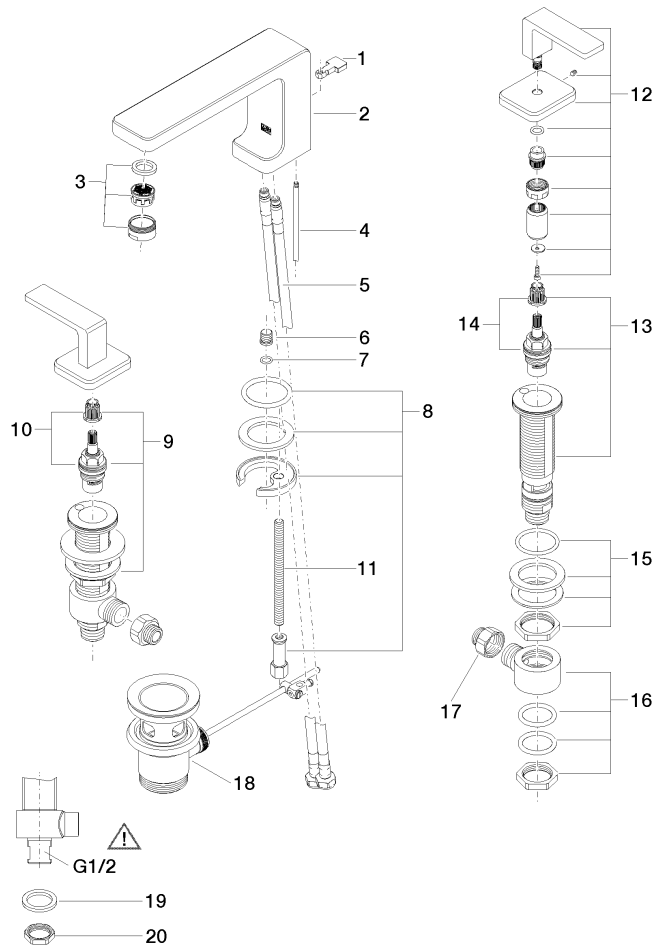
20 713 710 Product version from 8/31/2015 to 7/22/2021

### Certificates and sustainability

---

LGA\_19

WRAS\_250402



## Spare parts list

| No. | Item Number           | Name         | Quantity used | Delivery time |
|-----|-----------------------|--------------|---------------|---------------|
|     | 8 04 30 11 038 75 90  | fixing set   | 1.00          | 2             |
|     | 11 09 31 11 012 90    | pin          | 1.00          | 2             |
|     | 1 09 20 71 033-00     | handle       | 1.00          | 10            |
|     | 15 04 23 10 032 78 90 | fixing set   | 2.00          | 2             |
|     | 12 90 20 71 046 01-00 | handle       | 2.00          | 10            |
|     | 2 09 11 71 095 10-00  | spout        | 1.00          | 10            |
|     | 10 90 90 03 153 00 90 | top          | 1.00          | 2             |
|     | 9 04 17 11 058 53 90  | side panel   | 1.00          | 2             |
|     | 13 04 17 11 058 52 90 | side panel   | 1.00          | 2             |
|     | 3 90 23 01 118 01-00  | aerator      | 1.00          | 10            |
|     | 6 09 31 20 065 90     | plug         | 1.00          | 2             |
|     | 4 09 31 09 080-00     | pull-rod     | 1.00          | 10            |
|     | 14 90 90 03 152 00 90 | top          | 1.00          | 2             |
|     | 16 04 17 11 023 10 90 | distributor  | 2.00          | 2             |
|     | 5 04 30 04 100 00 90  | hose         | 2.00          | 2             |
|     | 19 09 30 11 059 90    | disc         | 2.00          | 2             |
|     | 20 09 23 10 012 90    | nut          | 2.00          | 2             |
|     | 7 90 14 10 060 00 90  | seal         | 1.00          | 2             |
|     | 17 09 24 03 185-00    | nipple       | 2.00          | 10            |
|     | 18 90 11 01 001 00-00 | pop-up waste | 1.00          | 10            |