
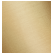

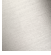



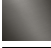


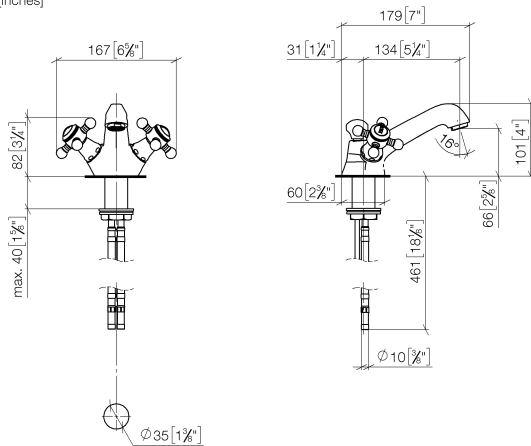
MADISON Single-hole basin mixer with pop-up waste - Brushed Durabrass (23kt Gold)
MADISON

22 500 360	Product version from 7/31/2009 to 9/7/2021		
	<ul style="list-style-type: none"> • 130mm projection • fixed spout • circular, air-enriched flow • height of mixer 100 mm • height up to aerator 65 mm • hole diameter 35 mm • 2x screw-in M 10 x 1 pressure hose, leak-tested • max. flow 7 l/min • lead-free • This product can help a building meet the requirements of Green Building Rating Systems, e.g. LEED®, BREEAM®, DGNB • WRAS 		<div> Brushed Durabrass (23kt Gold) 22 500 360-28 </div>
			<div> Chrome 22 500 360-00 </div>
			<div> Brushed Platinum 22 500 360-06 </div>
			<div> Platinum 22 500 360-08 </div>
			<div> Durabrass (23kt Gold) 22 500 360-09 </div>
			<div> Brushed Dark Brass 22 500 360-39 </div>
			<div> Brushed Dark Platinum 22 500 360-99 </div>
	Only suitable for basins with an overflow.		

MADISON Single-hole basin mixer with pop-up waste - Brushed Durabross (23kt Gold)

MADISON

22 500 360 Product version from 7/31/2009 to 9/7/2021
mm [inches]



Flow rate chart



Codes & Standards

DIN 4109

EN 200

ISO 3822

Scottish Water
Byelaws

UK Water Supply
Regulations

Ü-Zeichen

VA-Zeichen



MADISON Single-hole basin mixer with pop-up waste - Brushed Durabrass
(23kt Gold)

MADISON

22 500 360 Product version from 7/31/2009 to 9/7/2021

Certificates and sustainability

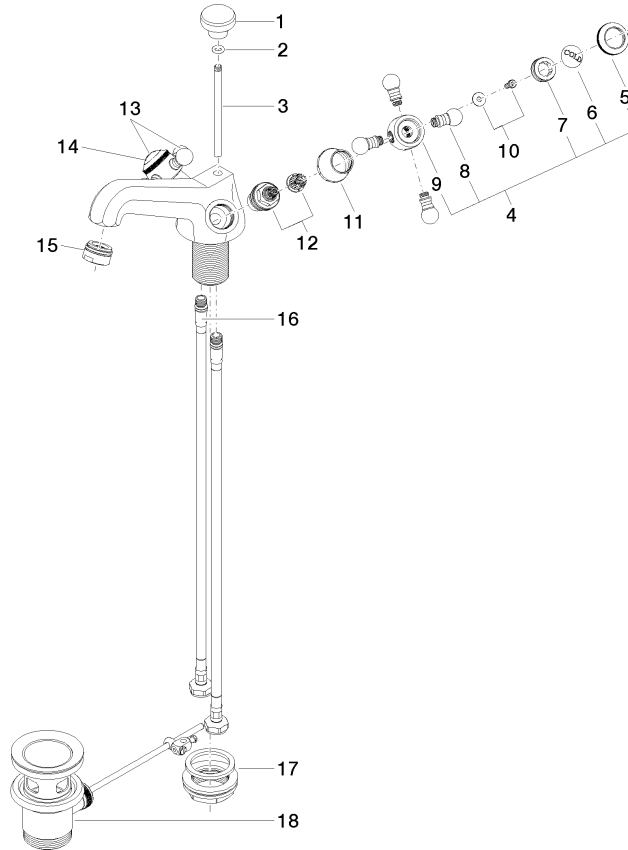
WRAS_2107	LGA_8	ETA_17
-----------	-------	--------

MADISON Single-hole basin mixer with pop-up waste - Brushed Durabross (23kt Gold)

MADISON

22 500 360 Product version from 7/31/2009 to 9/7/2021

Parts for other
finishes can be found
here: [Chrome](#)



Spare parts list

No.	Item Number	Name	Quantity used	Delivery time
6	09 26 01 010 90	accessories	1.00	2
12	90 90 03 151 00 90	top	2.00	2
13	04 20 36 002 07-28	handle (hot)	1.00	20
10	04 30 30 029 00 90	fixing set	2.00	2
3	09 31 09 004-28	pull-rod	1.00	20
14	09 26 01 011 90	accessories	1.00	2
1	09 20 36 030-28	handle	1.00	20
7	09 20 83 006 90	handle	2.00	2
8	09 20 36 004-28	handle	8.00	20
4	04 20 36 002 06-28	handle (cold)	1.00	20
16	04 30 04 104 00 90	hose	2.00	2
9	09 20 36 002-28	handle	2.00	20
11	09 21 02 055-28	cover	2.00	20
17	04 23 10 009 01 90	fixing set	1.00	2
5	09 20 36 005-28	handle	2.00	20
15	90 23 01 118 01-28	aerator	1.00	20
2	90 14 10 062 00 90	seal	1.00	2
18	90 11 01 001 00-28	pop-up waste	1.00	20