

**TARA Bath mixer for wall mounting with hand shower set - Champagne (22kt Gold)**

TARA







25 133 882



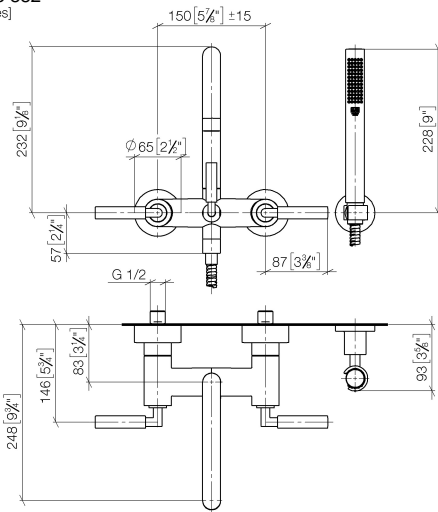
- spout: circular, air-enriched flow
- max. flow 22 l/min at 3 bar flow pressure
- Hand shower: COMPACT RAIN, max. flow rate 6.8 l/min (at 3 bar)
- complete hand shower set with anti-scale system
- 240mm projection
- rotary diverter for bath/shower
- slide-on rosettes Ø 65 mm
- rosette for shower holder Ø 50mm
- 1/2" connection
- gauge 150 mm - 15 mm
- metal shower hose 1250mm with integrated anti-twist protection

Intrinsic protection against back flow.

Stand pipes combination possible on request (x-TRA SERVICE).

|  |                                |               |
|--|--------------------------------|---------------|
|   | Champagne (22kt Gold)          | 25 133 882-47 |
|   | Chrome                         | 25 133 882-00 |
|   | Brushed Platinum               | 25 133 882-06 |
|   | Platinum                       | 25 133 882-08 |
|   | Dark Chrome                    | 25 133 882-19 |
|   | Brushed Durabronze (23kt Gold) | 25 133 882-28 |
|   | Matte Black                    | 25 133 882-33 |
|   | Brushed Champagne (22kt Gold)  | 25 133 882-46 |
|   | Brushed Chrome                 | 25 133 882-93 |
|  | Brushed Dark Platinum          | 25 133 882-99 |

25 133 882  
mm [inches]



Flow rate chart



Certificates

WRAS\_2210004.

TARA Bath mixer for wall mounting with hand shower set - Champagne (22kt Gold)

TARA

25 133 882  
Parts for other  
finishes can be found  
here: [Chrome](#)

