

27 789 970




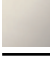

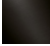


Fits: ELIO, TARA, TARA ULTRA

- spray flow
- automatic diverter for spout/Profi spray set
- height of mixer 665 mm
- individual rosette diameter 55mm
- profi spray hole diameter 30mm
- sprayface with anti-scaling system
- lead-free

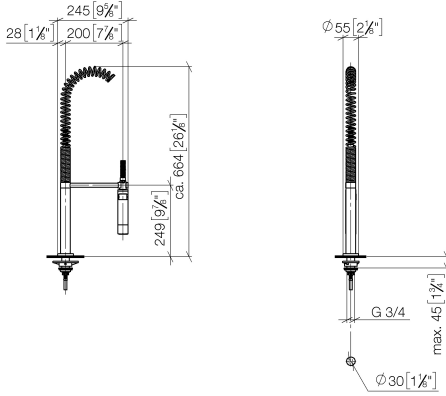
Can only be combined with 33826790, 32800790, 33826888, 32815888, 20815892, 33826875.

Intrinsic protection against back flow.

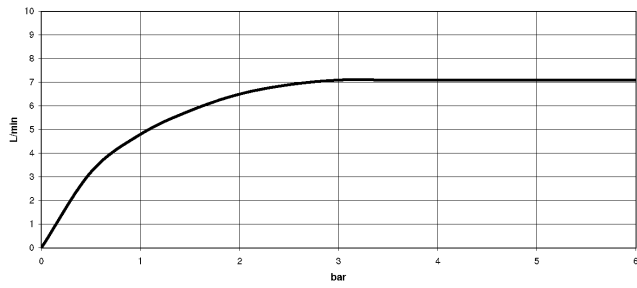
| | | |
|---|-----------------------|---------------|
|  | Brushed Chrome | 27 789 970-93 |
|  | Chrome | 27 789 970-00 |
|  | Brushed Platinum | 27 789 970-06 |
|  | Platinum | 27 789 970-08 |
|  | Dark Chrome | 27 789 970-19 |
|  | Brushed Dark Platinum | 27 789 970-99 |

27 789 970

mm [inches]
M 1:10



Flow rate chart



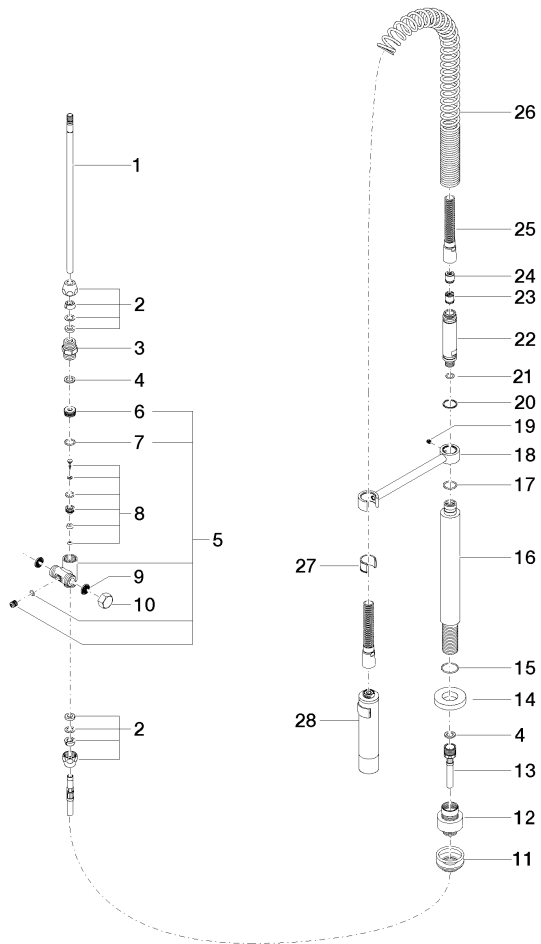
Certificates

LGA_18901.

Belgaqua_22_277_2
7_3.

27 789 970

Parts for other finishes can be found here: [Chrome](#)



27 789 970

Spare parts list

| No. | Item Number | Name | Quantity used | Delivery time |
|-----|--------------------|---------------------|---------------|---------------|
| 1 | 04 24 02 046 01-07 | pipe | 1 | 10 |
| 2 | 90 23 30 040 00-93 | threaded connector | 2 | 20 |
| 3 | 90 24 03 168 00 90 | nipple | 1 | 2 |
| 4 | 90 14 20 002 00 90 | seal | 2 | 2 |
| 5 | 90 17 09 046 10 90 | diverter | 1 | 2 |
| 6 | 09 24 04 112 10 90 | nipple | 1 | 2 |
| 7 | 90 14 10 033 00 90 | seal | 1 | 2 |
| 8 | 90 21 10 031 10 90 | diverter | 1 | 2 |
| 9 | 09 23 01 039 90 | sieve | 2 | 2 |
| 10 | 04 21 02 006 00 92 | cap | 1 | 2 |
| 11 | 04 23 10 004 03 90 | fixing set | 1 | 2 |
| 12 | 12 780 970 90 | Extension set - | 1 | 60 |
| 13 | 09 30 04 067 90 | hose | 1 | 2 |
| 14 | 09 28 10 064-93 | rosette | 1 | 60 |
| 15 | 09 14 10 120 90 | seal | 1 | 2 |
| 16 | 09 11 10 066 10-93 | connection | 1 | 20 |
| 17 | 09 14 10 031 90 | seal | 1 | 2 |
| 18 | 04 17 20 014 00-93 | holder | 1 | 60 |
| 19 | 09 31 11 049 90 | pin | 1 | 2 |
| 20 | 09 14 15 012 90 | ring | 1 | 2 |
| 21 | 09 14 10 003 90 | seal | 1 | 2 |
| 22 | 09 30 01 067 10-93 | adaptor | 1 | 60 |
| 23 | 90 23 01 141 00 90 | back-flow preventer | 1 | 2 |
| 24 | 09 23 01 046 90 | back-flow preventer | 1 | 2 |
| 25 | 90 30 02 065 00-93 | hose | 1 | 20 |
| 26 | 09 16 02 034 90 | spring | 1 | 2 |
| 27 | 90 18 40 035 00 90 | sleeve | 1 | 2 |
| 28 | 04 12 11 094 10-93 | shower | 1 | 20 |