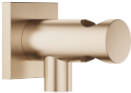


Wall elbow with integrated shower holder - Brushed Champagne (22kt Gold)

SERIES SPECIFIC

28 490 970

Product version from 6/1/2024



- 3/8" shower outlet
- rosette 60 x 60 mm
- 1/2" connection
- WRAS

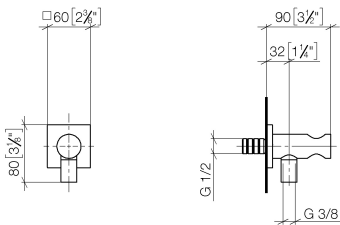
Intrinsic protection against back flow.

| | | |
|---|-------------------------------|---------------|
|  | Brushed Champagne (22kt Gold) | 28 490 970-46 |
|  | Chrome | 28 490 970-00 |
|  | Brushed Platinum | 28 490 970-06 |
|  | Platinum | 28 490 970-08 |
|  | Dark Chrome | 28 490 970-19 |
|  | Brushed Light Gold | 28 490 970-27 |
|  | Brushed Durabrass (23kt Gold) | 28 490 970-28 |
|  | Matte Black | 28 490 970-33 |
|  | Champagne (22kt Gold) | 28 490 970-47 |
|  | Brushed Chrome | 28 490 970-93 |
|  | Brushed Dark Platinum | 28 490 970-99 |

Wall elbow with integrated shower holder - Brushed Champagne (22kt Gold) SERIES SPECIFIC

28 490 970 Product version from 6/1/2024

mm [inches]



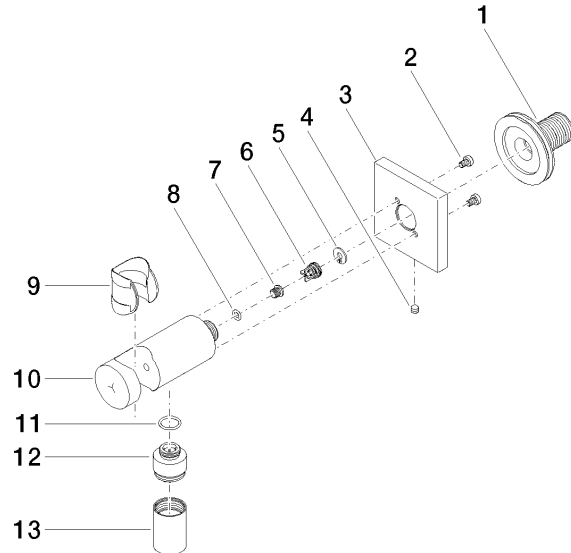
Codes & Standards

| | | |
|---------|---------------------------|--------------------------------|
| EN 1717 | Scottish Water Byelaws | UK Water Supply Regulations |
|---------|---------------------------|--------------------------------|

Certificates and sustainability

Belgaqua_21-024-2 WRAS_250402

Parts for other
finishes can be found
here: [Chrome](#)



Spare parts list

| No. | Item Number | Name | Quantity used | Delivery time |
|-----|--------------------|---------------------|---------------|---------------|
| 11 | 09 14 10 213 90 | seal | 1.00 | 2 |
| 3 | 09 27 97 043-46 | rosette | 1.00 | 30 |
| 7 | 09 30 30 113 20 90 | screw | 1.00 | 2 |
| 12 | 09 24 03 279-46 | nipple | 1.00 | 30 |
| 4 | 09 31 11 112 90 | pin | 1.00 | 60 |
| 1 | 90 24 03 280 00 90 | nipple | 1.00 | 2 |
| 10 | 09 11 03 124-46 | connection | 1.00 | 30 |
| 6 | 09 23 01 131 90 | back-flow preventer | 1.00 | 2 |
| 5 | 09 16 01 023 90 | ring | 1.00 | 2 |
| 8 | 09 14 10 001 90 | seal | 1.00 | 2 |
| 2 | 09 30 30 037 90 | screw | 2.00 | 2 |
| 9 | 09 18 40 216 90 | sleeve | 1.00 | 2 |
| 13 | 90 21 02 069 00-46 | cover | 1.00 | 30 |