




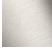
28 508 710 Product version up to 5/15/2020



- spray head Ø 92mm
- Three settings: COMPACT RAIN, COMPACT SOFT FLOW, COMPACT AQUAPRESSURE FLOW, max. flow rate 6.8 l/min (at 3 bar)
- Function from: 5 l/min
- with anti-scale system

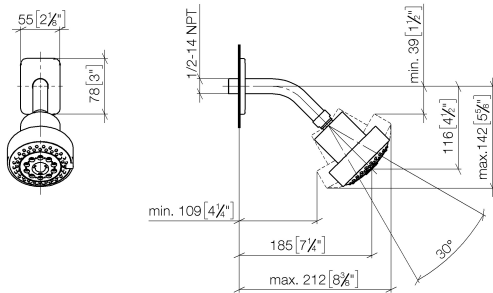
Technical data:

- 200mm projection
- ball-joint pivotable through 30°
- rosette 78 x 55 mm
- 1/2" connection

	Chrome	28 508 710-00 0010
	Chrome	28 508 710-00
	Brushed Platinum	28 508 710-06 0010
	Brushed Platinum	28 508 710-06

28 508 710 Product version up to 5/15/2020

mm [inches]



Codes & Standards

ASME A112.18.1 cUPC DIN 4109 EPA WaterSense

ISO 3822 Ü-Zeichen WaterSense

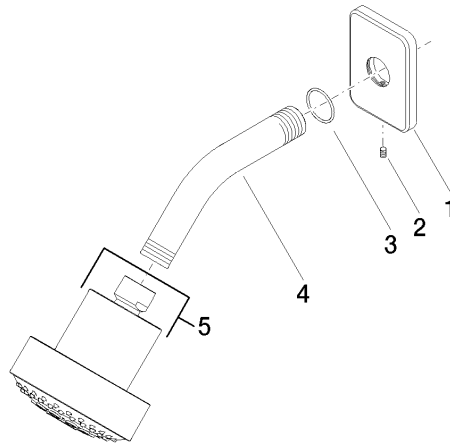


Certificates and sustainability

LGA_38 IAPMO_4976 IAPMO_11777

28 508 710 Product version up to 5/15/2020

Parts for other
finishes can be found
here: [Chrome](#)



Spare parts list

No.	Item Number	Name	Quantity used	Delivery time
5	04 12 11 110 30-00	shower	1.00	10
2	09 31 11 048 90	pin	1.00	2
3	09 14 10 098 90	seal	1.00	2
4	09 11 03 011-00	connection	1.00	10
1	09 27 71 027-00	rosette	1.00	10